

# InfraStructures

CONSTRUCTION • PUBLIC WORKS • NATURAL RESOURCES

Volume 22 • Number 2 • February 2017 • *English Edition*





## POWER FACTS

275-770 hp  
5, 6 and 8 cylinders  
US Tier 4f, EU Stage IV  
NO DPF

# Solutions for Hard Work.

### PROVEN US TIER 4f AND EU STAGE IV TECHNOLOGY – WITH NO DPF.

The Scania engine platform features compact dimensions and a common footprint which enhances flexibility, simplifies installation and shortens time-to-market. Last but not least: Proven reliability, outstanding operating economy and industry-leading fuel efficiency vouches for long-term profitability and satisfied customers.

Power at work. It's here for you today.

For the closest dealer, visit [www.scaniausa.com](http://www.scaniausa.com)

COME VISIT US AT

March 7 - 11, 2017, Las Vegas, NV  
Booth #65629 - Silver Lot



**SCANIA**  
Scania U.S.A. Inc.

**Volume 22 Number 2  
February 2017**

**PUBLISHER**

Jean-François Villard  
editor@infrastructures.com

**CONTRIBUTING EDITORS**

Rob Holden  
Robert Marenger  
toronto@infrastructures.com

**ADVERTISING SALES**

sales@infrastructures.com

**TELEPHONE**

**514-233-1295  
613-862-1295  
416-795-1295**

**FAX: 514-528-9932**

**ADDRESS CHANGES**

Send us your address changes by E-Mail to:  
**subscriptions@infrastructures.com**

**MAILING ADDRESS**

4330 Saint-Hubert Street  
Montreal (Quebec) H2J 2W7

**INTERNET**

www.infrastructures.com



/InfraStructuresMagazine



InfraStructures is circulated free of charge to qualified users of heavy machinery and specialized equipment in construction, public works, and natural resources across Canada in both French and English.

The cost of a subscription for either edition for one year is \$50 for Canadian residents and US\$75 or €75 for U.S. and overseas.

The content of InfraStructures is available for consultation on the website www.infrastructures.com. It may not be reproduced or transmitted in any form, either in part or in full, without the written consent of the copyright owner.

**LEGAL DEPOSIT**

Bibliothèque Nationale du Québec

**DISTRIBUTED BY CANADA POST**  
Publications Mail Agreement #40052183

## A Brief Word...

*If you're reading this, then the Doomsayers were wrong about January 20<sup>th</sup>.*

*Now here is February – the month of “Love”, though there are few who will feel loving toward their utility provider or a certain Premiere (or two).*

*How is electricity pricing and carbon tax affecting your business? Has it begun to bite? Has it resulted in a loss of opportunity? Are projects being deferred, refinanced, or cancelled as a result? What would even a minuscule rise in interest rates do for your FY17 projections?*

*We never know what will flower come spring, but we prepare the ground and hope for the best. It is the same for business, we can control only what is within our grasp and be vigilant and prepared for all eventualities. This may be good advice for many aspects of life.*

*InfraStructures is a tool to help you prepare. Our editorial content is superior to any comparable publication and our readers use it to plan equipment needs, utilizations and to inspire new uses and applications of crews and kit.*

*The days are growing longer, and spring is around the corner. Cheer-up, and send yourself a Valentine!*

OptiFant 8000 / CityFant 60



**BUCHER  
schörling**

**SALES & RENTALS**  
Vacuum type street sweepers  
Different models from 1 m<sup>2</sup> to 10 m<sup>2</sup>  
USED SWEEPERS IN STOCK



**Accessories Machinery Limited**  
www.aml.com

**1-800-461-1070**

On the cover: At CONEXPO-CON/AGG 2017, Ammann technology and the productivity advantages it offers will be on display in products ranging from fully assembled asphalt plants to small vibratory plate compactors, including heavy rollers like the Ammann ARX 90 Tier 4 final Tandem Roller.

 S5464



## ROBIT PLC ESTABLISHES MANUFACTURING OPERATIONS IN THE U.S. VIA ASSET PURCHASE

Robit Plc signed and closed an agreement to purchase the manufacturing assets and IPRs from Halco International LLC and Halco America LLC on 12<sup>th</sup> January 2017.

As a part of the global growth strategy Robit Plc strengthens significantly its footprint in the U.S.

With this purchase Robit Plc receives the

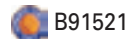
strong brand of Halco and a base to grow the production volume in the U.S. Robit Plc will be manufacturing its down-the-hole (DTH) products with the target market being especially the Americas region. The range covers all common sizes used in quarrying, construction, mining and well drilling.

The 4,000 m<sup>2</sup> factory is located 80 km north of Dallas, in the city of Sherman, Texas. Its highly integrated supply chain

network links through multiple transportation modes, including air and express delivery services, freight rail and truck transport.

Halco is a pioneer brand in down-the-hole drilling with the brand name originating from Halifax Tool Co, UK 1948. Both Halco companies were owned by Regent since 2014 when the California-based private equity company acquired them from Caterpillar. Prior the sale, Caterpillar had invested heavily into the facilities and machinery.

Source: Robit Plc



## Fairbanks Scales to Showcase Weighing Innovation at CONEXPO-CON/AGG

Fairbanks Scales Inc. announces they will be showcasing state-of-the-art industrial scales at the CONEXPO-CON/AGG in Las Vegas, Nevada, March 7-11, 2017. The show is the largest international trade show in the Western Hemisphere serving the construction industries, attracting top-level decision makers from around the world.

Cutting-edge products on display at Fairbanks' booth will include the Titan Series Portable Vehicle Scale, designed to the highest standards in the industry. The Titan is constructed with multiple 12" and 16" Structural Steel I-beams. These massive supports, coupled with the highest deflection rating on the market, produce an extremely rigid and durable portable weighbridge. The Titan is designed with an open bottom design to prevent moisture from being trapped and creating rust. The Titan load cells are Hermetic Sealed, IP69K rated, Stainless Steel and impervious to moisture intrusion.

Fairbanks Scales will also feature its FB2550 Driver Assist Terminal, designed to speed the vehicle weighing process and reduce associated operating costs. By allowing drivers to remain inside their vehicles, the FB2550 DAT eliminates safety concerns and liabilities due to drivers walking across scale platforms and traffic lanes.

Additionally, show attendees will be able to view the 1605T Series Remote Display, and to watch and discuss with experts how it operates. Fairbanks' high-intensity LED remote display with integrated traffic light is designed to save you time, space, and money by combining traffic control and display functions in a single device.

**REVERSIBLE  
SNOW PLOWS  
WITH TRIPPING EDGE**

**HEAVY DUTY  
MODEL "HD"**

**PUSHER BLADES**

**SIDE WINGS**

- TRUCK
- WHEEL LOADER
- GRADER

**MANUFACTURER  
SNOW REMOVAL  
EQUIPMENT &  
ACCESSORIES FOR  
HEAVY MACHINERY**

**BUCKETS FOR  
FRONT END LOADERS  
& EXCAVATORS**

**QUICK ATTACH FOR  
FRONT END LOADERS  
& EXCAVATORS**

**FORKS FOR  
FRONT END LOADERS  
& TOOL CARRIERS**

1-888-649-3331  
(514) 866-6859  
(450) 649-9461  
Fax: (450) 649-1874

1735 Lavalsier, Sainte-Julie (Quebec) J3E 1Y6

CALL US  
TOLL FREE NUMBER **1-888-649-EDF-1**

**INTERNET : [www.edfltd.com](http://www.edfltd.com) • E-MAIL : [info@edfltd.com](mailto:info@edfltd.com)**

The technology is also available as a wireless configuration. The unique all-in-one design with the added benefit of wireless technology eliminates the need for expensive cable and conduit installation.

Source: Fairbanks Scales  S5818

#### HYUNDAI CONSTRUCTION EQUIPMENT AMERICAS NAMES TOP DEALERS FOR 2016

Hyundai Construction Equipment Americas honored 7 of its top dealers for 2016 during a meeting of its North American dealers at the AED Summit, held January 10-13, 2017, in Chicago, Illinois.

Hyundai awarded its top honor of Dealer of the Year to Rob's Hydraulics, Inc. of Grimesland, North Carolina, and for the first time named a Rookie Dealer of the Year, with RECO Equipment of Belmont, Ohio, earning that title.

Selected as top performing Hyundai construction equipment dealers of 2016 were CIMI Inc. of Levis, Quebec, Chappell Tractor Sales, Inc. of Milford, New Hampshire, Four Seasons Equipment, Inc. of Houston, Texas, Modern Group, Ltd. of Bristol, Pennsylvania, and Rueter's, of Carroll, Iowa.

"Hyundai has served the North American construction equipment market for more than 25 years. Throughout that time, our dealers have helped us achieve our goals and meet the needs of Hyundai construction equipment customers," M.S. Kang, president, Hyundai Construction Equipment Americas, said at a luncheon honoring its top dealers. "We congratulate the sales, service and management teams of our 2016 top dealerships for their hard work and success."

Source: Hyundai Construction Equipment Americas

#### BRITISH COLUMBIA ADOPTS ASTM A1035 STEEL INTO THEIR CORROSION PROTECTION STANDARDS TO EXTEND BRIDGE SERVICE LIVES

The Canadian province of British Columbia, through its Ministry of Transportation and Infrastructure, recently updated its

Bridge Standards and Procedures Manual Supplement to the Canadian Highway Bridge Design Code (CHBDC) S6-14 to include ASTM A1035 high strength, corrosion resistant reinforcing steels for use on its concrete bridge structures. The Ministry delineates the rebar requirements for each of its bridge classifications within its standards, including ASTM A1035 for many of its roadways.

ChrômX reinforcing steels (ChrômX 9000, 4000 and 2000) produced by Cascade Steel Rolling Mills, Inc. for MMFX Steel Corporation to meet the ASTM A1035 CS, CM and CL specifications provide extended service lives for bridges due to the products' corrosion resistant properties. The MMFX line of ChrômX reinforcing steels provides over 690 MPa of yield strength and varying levels of corrosion resistance, so designers can utilize the high strength efficiencies and select the corrosion protection needed for the structure.

"The Ministry of Transportation and Infrastructure has taken a definitive step in upgrading its infrastructure by updating its corrosion protection design standards to

include the full line of ChrômX products," according to Tom Russo, CEO of MMFX Steel. "Since rebar corrosion is the main cause of bridge deterioration, the use of ChrômX reinforcing steels will result in longer bridge service lives."

British Columbia joins other ministries of transportation, like Alberta, and departments of transportation, like Virginia, in using ChrômX reinforcing steels as a corrosion resistant reinforcement for corrosion prevention. Rebar represents a small percentage of the overall costs of a bridge, yet it is the material that defines the useful life of the structure. By including ASTM A1035 steels, the BC Ministry of Transportation and Infrastructure has benefited taxpayers by lowering maintenance and repair costs over a longer service life, thereby lowering life cycle costs and traffic disruptions.

Source: MMFX Steel Corporation

#### COMPANY MERGER AT BAUER RESOURCES

At the start of December, BAUER Umwelt GmbH, BAUER Water GmbH and BAUER Resources GmbH were merged to form a single company.



**SEE US AT CONEXPO**  
Booth # G72213

## BEKA-LUBE SYSTEMS TAKE A THUMPIN' & KEEP ON PUMPIN'

Beka-Lube auto-lube is built to take the bumps and grinds of a hard-working life on the road or off. Give your fleet the solution that keeps them on the job.

- Cast aluminum base withstands impacts and hot/cold cycles without leaking
- No springs! Eccentric gear drive resists wear, fatigue and cold
- Consistently precise grease dosing

Find out why industries are choosing today's best-built auto-lube systems.  
Call 1.888.862.7461 or email us at [info@beka-lube.com](mailto:info@beka-lube.com).

**Beka-Lube PRODUCTS INC.**  
LUBRICATION PROTECTION SERVICES

1.888.862.7461  
[www.beka-lube.com](http://www.beka-lube.com)

**BEKA**  
LUBRICATION

BEKA - LUBRICATION SPECIALISTS SINCE 1927

**20 years on the web!**

Looking for more stories? Visit  
[www.infrastructures.com](http://www.infrastructures.com)



"The positive growth of our environmental business and the resulting requirements show that the previous strategy with several companies was no longer suitable for the future," says Johann Mesch, Bauer managing director. "The merging of BAUER Resources GmbH, BAUER Umwelt GmbH and BAUER Water GmbH will result in many administrative simplifications in the development of projects, meaning that we will now be an even stronger partner with pooled expertise."

BAUER Umwelt celebrated its 25-year anniversary in 2015 and is today one of the prominent environmental companies in Germany and the surrounding countries. Its portfolio includes the remediation of waste sites, disposal of contaminated waste from construction and industry and the cleaning of ground and site water. In July 2015, BAUER was awarded a contract by Roche Pharma AG for the remediation of part of the former Kesslergrube landfill. BAUER Umwelt GmbH's primary task is to excavate and collect approximately 280,000 t of soil in special safety containers and to haul them away. The contaminated excavated material will then undergo thermal treatment. The remediation of Kesslergrube is the largest single contract in the history of the BAUER Group.

BAUER Water has been one of the leading providers in the area of water treatment for over 20 years. As a competent plant manufacturer, the company boasts many years of experience in the areas of drinking water, process water, waste water and decontamination. BAUER Water's services range from consultation, assessment of feasibility, system conception, planning and design of plants, assembly and commissioning of plants, to plant servicing including delivery of service products and ancillary materials with ongoing optimization of the plant operation.

Now, all 3 of the companies have completely merged with BAUER Resources GmbH as legal successors. "The previous contact persons are still available for our customers and partners and our locations will also remain fully unchanged. The

known and proven brands BAUER Umwelt and BAUER Water will also continue to represent our services on the market," explains Johann Mesch.

Source: BAUER Group  S5420


## ALL INVESTS IN NEW LIEBHERR ALL-TERRAIN CRANES AHEAD OF THEIR U.S. DEBUT

The ALL Family of Companies announces that they have preordered several new Liebherr models as yet unavailable in the U.S. – including 2 LTM 1450-8.1 450 t all-terrain cranes. The Liebherr Group plans to debut the LTM 1450-8.1 at the 2017 CONEXPO-CON/AGG show that will be held from March 7–11, in Las Vegas.

With a powerful 85 m telescopic main boom and a full range of lattice jib attachments, this Liebherr AT can handle jobs at – and above – its 450 t capacity. The LTM 1450-8.1 was manufactured to accommodate a variety of transport weight and machine axle configurations, making it one of the most road-friendly 8-axle ATs on the market.

"This all-terrain crane is unique, as it was designed for both ease of transport and minimal setup time, which increases efficiency before, during, and after the job," said Hutton Strader, business development specialist for ALL. "The new VarioBallast® system also gives us the flexibility to have capacity when we need it, while still allowing us to work in spaces where many other large cranes simply will not fit. We see great potential for this machine to work on wind farms, refineries, and chemical plants, as well as in setting up tower cranes."

"We're committed to investing in machines that will provide distinct advantages for our customers, whether in terms of strength, flexibility, mobilization, or cost effectiveness," said Michael L. Liptak, president of ALL. "The LTM 1450-8.1 delivers on all of those criteria."

Source: The ALL Family of Companies Liebherr  G4637

## HAVER & BOECKER BRINGS FLEXIBILITY TO JOBSITES WITH NEW PORTABLE F-CLASS VIBRATING SCREEN

Haver & Boecker's new, portable F-class vibrating screen offers increased mobility to maximize flexibility and ROI for aggregate and mining operations. Each portable F-Class features a base frame that easily attaches to a custom-built chassis.

### BRITISH COLUMBIA

**Great West Equipment**  
Campbell River, BC (250) 286-0123  
Cranbrook, BC (250) 426-6778  
Fort St. John, BC (250) 785-4223  
Kamloops, BC (250) 372-3996  
Nanaimo, BC (250) 716-8804  
Prince George, BC (250) 612-0255  
Surrey, BC (604) 882-5051  
Terrace, BC (250) 635-9033  
Vernon, BC (250) 549-4232  
Williams Lake, BC (250) 392-9599  
[www.gwequipment.com](http://www.gwequipment.com)

### SASKATCHEWAN

**Redhead Equipment**  
Estevan, SK (306) 634-4788  
Lloydminster, SK (306) 825-3434  
Melfort, SK (306) 752-2273  
Prince Albert, SK (306) 763-6454  
Regina, SK (306) 721-2666  
Saskatoon, SK (306) 934-3555  
Swift Current, SK (306) 773-2951  
[www.redheadequipment.ca](http://www.redheadequipment.ca)

### MANITOBA

**Westcon Equipment & Rental Ltd.**  
Winnipeg, MB 1-800-453-2435  
[www.westconequip.ca](http://www.westconequip.ca)

### ONTARIO

**Strongco**  
Orillia, ON 1-800-268-7004  
Stittsville, ON 1-800-822-3308  
Sudbury, ON (705) 692-0552  
Thunder Bay, ON (807) 475-3052  
[www.strongco.com](http://www.strongco.com)

**Top Lift Enterprises, Inc.**  
Caledon, ON (905) 857-5200  
Stoney Creek, ON (905) 662-4137  
[www.toplift.com](http://www.toplift.com)

### QUEBEC

**Strongco**  
Baie-Comeau, QC 1-866-996-3091  
Chicoutimi, QC 1-800-323-1724  
St-Augustin, QC 1-800-463-2662  
Trois-Rivières, QC 1-855-840-0828  
Val d'Or, QC 1-800-561-4192  
[www.strongco.com](http://www.strongco.com)

**Top Lift Enterprises, Inc.**  
Sherbrooke, QC (819) 612-5438  
St-Laurent, QC (514) 335-2953  
[www.toplift.com](http://www.toplift.com)

### NEWFOUNDLAND AND LABRADOR

**Strongco**  
Mount Pearl, NL (709) 747-4026  
[www.strongco.com](http://www.strongco.com)

### NEW BRUNSWICK

**Strongco**  
Moncton, NB (506) 857-8425  
[www.strongco.com](http://www.strongco.com)

### NOVA SCOTIA

**Strongco**  
Dartmouth, NS (902) 468-5010  
[www.strongco.com](http://www.strongco.com)

### PRINCE EDWARD ISLAND

**Strongco**  
[www.strongco.com](http://www.strongco.com) (902) 468-5010

Looking for more stories?  
Visit our website

[www.infrastructures.com](http://www.infrastructures.com)



SEE US AT



Booth #  
G4027

# PURPOSE-BUILT FROM THE GROUND UP



GET THE DETAILS ON WHY YOUR NEXT SCRAP & STEEL MATERIAL HANDLER SHOULD BE A SENNEBOGEN »



## What if your purpose for a purpose-built scrap handler isn't quite the same as the other guy's purpose?

Only SENNEBOGEN scrap handlers are purpose-built one machine at a time to meet *your* goals.

### Maximum Throughput • Built-in Safety

#### Think of the possibilities!

See how SENNEBOGEN can purpose-build the right machine for you at [www.sennebogen-na.com/scrap](http://www.sennebogen-na.com/scrap)

[www.sennebogen-na.com](http://www.sennebogen-na.com) | +1-704-347-4910

- Diesel and electric-drive machines from 44,000 to 750,000 lbs.
- Full range of rubber tired, tracked and stationary models with customized boom & stick configurations.

## SENNEBOGEN®



The portable plant includes a hydraulic system that positions the vibrating screen at the optimal angle. These features allow producers to move and setup the portable F-Class in less than 30 minutes in nearly any location.

"To help our customers streamline their operations, and provide solutions to a broader array of operations, we amplified our F-Class vibrating screen by adding portability," said Karen Thompson, Haver

& Boecker Canada president. "This not only gives customers the flexibility to easily travel from jobsite to jobsite, but our leading edge, 4-bearing screening technology virtually eliminates the common issues of pegging, blinding and cross contamination, therefore increasing overall efficiency and profitability."

Beyond flexibility, Haver & Boecker's updated F-Class vibrating screen offers up to 3 screen decks. The vibrating screen fea-

tures an advanced double eccentric shaft design, supported by 4 high-performance, double-spherical roller bearings. Each F-Class is equipped with Haver & Boecker's revolutionary Ty-Rail™ quick-tensioning system, which minimizes downtime for screen media change-outs by about 50%.

The F-Class is ideal for screening situations that require consistent, load independent performance at constant g-force in all operational modes. Featuring a unique and reliable, proven 4-bearing technology, the vibrating screen minimizes structural vibration and delivers a consistent stroke, which 2-bearing screens cannot provide.

The vibrating screen is mounted on a chassis, which uses hydraulics to achieve an optimal screening angle – from 15° to 25° – as well as to lift the machine while adding cribbing for support. This setup process takes less than 30 minutes to complete. Take down is even faster, requiring less than 20 minutes to lower the unit so it can move to the next location.

"With the fast pace of the industry and the underlying need to increase screening efficiency and profitability, it was the right time to launch the portable F-Class," Mrs Thompson said. "The demand for portable plants has grown significantly over the years, which is why we wanted to provide a solution for our customers. We're using our decades of experience coupled with that of our partners, such as HIKON Industries, to develop the absolute best mobile screening platform on the market. Together, we can offer our customers the entire package."

Businesses can customize the portable F-Class setup to include a crusher system for enhanced productivity. The F-Class is ideal for tough applications, such as scalping and classifying ores, minerals, stones, sand and gravel.

Source: Haver & Boecker Canada

 S5832



**Canada's LARGEST Heavy Equipment Show**

**NATIONAL HEAVY EQUIPMENT SHOW**  
CONSTRUCTION • ROAD BUILDING • LAND IMPROVEMENT • INFRASTRUCTURE  
TORONTO • ONTARIO • CANADA

**APRIL 6 - 7 | 2017**

THE INTERNATIONAL CENTRE

Produced by:  Master Promotions Ltd.

Official Partner: 

**ATTENTION VISITORS:**  
Pre-register by March 24, 2017 to **SAVE 50% &**  
**Fast-track your entrance to the show!**

**SHOW HOURS OPEN DAILY 9 am – 5pm**

**20th ANNIVERSARY**

Follow us on Twitter  #NHES2017  
Like us on Facebook 

Visit us online for all the exciting details  
& to pre-register today.  
**WWW.NHES.CA**

#### VISIT SANDVIK MINING AND ROCK TECHNOLOGY AT CONEXPO-CON/AGG

Visitors are encouraged to visit Sandvik Mining & Rock Technology's booth during CONEXPO-CON/AGG to learn about new developments in Mineral and Ground Tools for mining, trenching and road planing. Sandvik's latest generation of patented carbide grades, manufactured using an innovative process technique with completely new raw materials, has made



# SIMPLICITY

THE HERCULES HYDRAULIC HAMMER



- LIGHTWEIGHT UNIT
- EASY TO ON LOAD AND OFF LOAD
- LOW OPERATING COST
- HOOK UP IS QUICK & EASY
- IDEAL FOR BRIDGES WITH LOW CLEARANCE
- EASILY NAVIGATES DOWN NARROW PATHS
- LOW CAPITAL INVESTMENT

# H<sup>3</sup>

HMC-US.COM



Hercules Machinery Corporation  
Manufacturer and Supplier of Foundation Equipment

800.348.1890

HMC-US.COM



it possible to create new, extra-coarse, super-tough alloys with perfectly uniform grain structure. The benefit is that the tip's material grade can be better matched to hard rock and soft rock applications.

Sandvik constantly develops new hard material alloys to function in the most demanding environments. One result of its extensive research projects in this field is the development of the new carbide grade generation – providing larger, stronger and more efficient tools. Demands on tool performance, particularly relating to cemented

carbide tip material and its resistance to wear and fracture, become more critical as operations progress into harder rock and mineral formations. Larger continuous cutting machines are being used to replace the traditional drill-and-blast process in many mining projects. This continuous cutting process offers a lower cost per ton of excavated material, ensures better worker safety and also has a positive effect on the environment.

Sandvik is the world's leading supplier of machines and tool systems for all rock, sur-

face and mineral excavation applications. The company delivers millions of tools annually for numerous applications – from road planing and ice scraping, to projects that require roof drilling bits for all types of coal and soft minerals, to tools that meet the needs of the biggest tunneling, trenching and surface mining applications. Sandvik tools are manufactured globally to the highest quality standards, using the strongest materials and most stringent manufacturing processes to ensure their hardness and superior performance in the field.

Source: Sandvik Mining & Rock Technology  S5128

## Brokk Heightens Power & Efficiency with Brokk 110 Remote-Controlled Demolition Machine

Brokk will present the Brokk 110 at CONEXPO-CON/AGG 2017, March 7-11, 2017, in Las Vegas. The electric-powered machine features increased demolition power over its predecessor, the Brokk 100, and includes the all-new Brokk SmartPower™ electrical system. The machine's improvements increase the reliability and versatility for Brokk customers working on harsh jobsites in industries such as construction, metal processing, mining and nuclear.

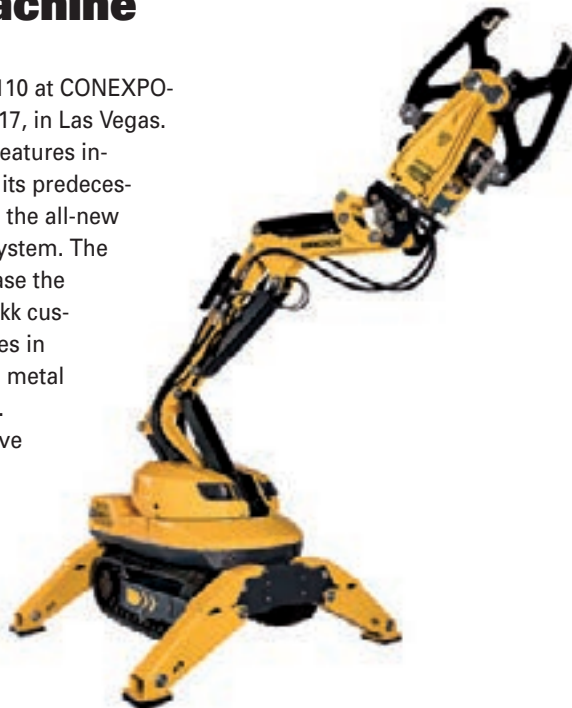
"For more than 40 years, we've focused on offering the best possible products," said Martin Krupicka, Brokk Group CEO. "With the Brokk 100, we saw the opportunity to further enhance efficiency and increase hitting power, which led to the development of the new Brokk 110."

The new machine features 3 m reach and weighs 990 kg. It delivers 15% more power than the older Brokk 100 and 50% more than the popular Brokk 90 while retaining a compact design, making it ideal in restricted spaces and on weak floors.

The Brokk 110 includes Brokk SmartPower™, the company's all-new electrical system, which is also available on the new Brokk 120 Diesel and Brokk 280. It incorporates hardened components and fewer moving parts than its predecessor and optimizes performance based on a number of factors, including power supply quality and ambient temperature. The system can sense when a power supply is poor or faulty, making it suitable for generators or unreliable power supplies.

The Brokk 110 is compatible with the attachments available for the Brokk 100, including breakers, crushers, grapples, rock drills and shears. The compact machine and its attachments fit easily through standard doors and inside passenger elevators. With its low floor load, the Brokk 110 is able to maneuver in otherwise inaccessible areas, such as stairwells or elevators. Its compact size is ideal for a variety of applications, from top-down demolition and interior strip-outs to selective concrete removal.


Source: Brokk Inc.



## ELLIOTT LAUNCHES 36142 BOOM TRUCK FEATURING LONGEST BOOM IN ITS CLASS

Elliott Equipment Company is proud to announce the release of the new 32.6 t 36142 BoomTruck telescopic truck-mounted crane model featuring the longest boom available in its class. With a 5-section 43.28 m main boom and optional 9.75 m - 14.93 m 2-section jib, the 36142 offers a maximum tip height of 61.26 m.

The new model is designed to serve a range of customers including those in the utility/transmission construction industry who have ongoing needs for long-reach telescopic cranes on road legal chassis that can be used for both material handling and working at height using a detachable work platform.

Source: Elliott Equipment Company  G3757

## IMT ENHANCES DOMINATOR® LINE WITH NEW FEATURES

Iowa Mold Tooling Co. Inc. (IMT), an Oshkosh Corporation company recently announced 3 new enhancements to its Dominator line of service trucks. Innovative improvements to the boom support, master lock system and rear access package build upon the best-in-class quality and dependability IMT is known for, while streamlining the Dominator truck user experience.

"We listened to our customer's needs, and developed these three enhancements to improve upon the Dominator's ease of use," said Jim Hasty, general manager of

Looking for a supplier's website?  
Visit [www.infrastructures.com](http://www.infrastructures.com)

 B90703



# SIMPLICITY

THE HERCULES HYDRAULIC HAMMER



- LIGHTWEIGHT UNIT
- EASY TO ON LOAD AND OFF LOAD
- LOW OPERATING COST
- HOOK UP IS QUICK & EASY
- IDEAL FOR BRIDGES WITH LOW CLEARANCE
- EASILY NAVIGATES DOWN NARROW PATHS
- LOW CAPITAL INVESTMENT

# H<sup>3</sup>

HMC-US.COM



Hercules Machinery Corporation  
Manufacturer and Supplier of Foundation Equipment

☎ 800.348.1890

🌐 HMC-US.COM



IMT. "The upgraded boom support, master lock system and rear access package work together to ensure the Dominator's position as a top-of-the-line service truck, where every detail matters."

The boom support will now be built standard with molded urethane in place of rubber. The shock absorbing, weatherproof urethane is formed over sheet metal, which provides dependable support.

As a company always on the lookout for ways to innovate, IMT is proud of its new, optional master lock system. The new master lock is a spring-loaded system with

a push-pull operation that ensures a secure lock every time. Users will have peace of mind with the new master lock system.

Convenient access has always been a priority in the Dominator line, which inspired the improvements to the upgraded rear access package. Keeping the Occupational Safety and Health Administration's 3 points of contact guidelines in mind, IMT equipped the Dominator with an extended handle and an extra step. The handle provides more surface for 2 hands to make contact, while the extra step reduces the height of the initial step as well as the

distance between steps. This access package is now standard across the Dominator product line.

These improvements ensure exceptional performance, safety and convenience across IMT's Dominator line.

Ever-improving, IMT continues to develop innovative features for its service trucks. Further enhancements specific to the Dominator line will be announced at CONEXPO-CON/AGG next month.

Source: Iowa Mold Tooling Co., Inc.

 N10625

## BSP International Foundations at CONEXPO-CON/AGG

BSP International Foundations will be exhibiting several of its products at CONEXPO-CON/AGG in Las Vegas from March 7-11, 2017.

The UK company is using the exhibition to announce the launch of its DX-RT range of impact hydraulic piling hammers to the North American market. The 3-model range has been developed for contractors working on railroad infrastructure and civil engineering projects.

BSP has specifically designed the compact and versatile DX-RT piling hammers to drive steel piles to support electrification stanchions, gantries and other railway projects requiring foundation piling. They offer drop weights of 1.5 t, 2 t and 3 t.

All the hammers have been designed as an attachment for mounting on road and rail hydraulic excavators with an operating weight of over 30 t and a minimum hydraulic oil flow of 140 l/min.

Although designed for railroad projects, the DX-RT hammers can be adapted for use on civil engineering contracts to drive sheet piles, concrete piles, timber piles, small bearing piles or tubular steel piles with ultimate load bearing up to 1,800 kN depending on site conditions. They can be operated directly from a suitable hydraulic excavator base or hydraulic crane.

All BSP hammers have full product support from Jinnings Equipment, the company's distributor in the U.S., based at Fort Wayne, Indiana.

In addition to its impressive range of piling hammers, BSP manufactures Rapid Impact Compactors (RIC), which have become the preferred method for an increasing number of shallow ground improvement projects around the world.

The recently introduced RIC-16000 model joins an established 4-model range offering dropweights from 5 t up to 16 t. Depending on prevailing ground conditions this model is capable of significant ground consolidation to depths of more than 8 m.

Source: BSP International Foundations Ltd.



 S5171

## MAGNETEK INTRODUCES NEW CABLE REEL PRODUCT LINE

Magnetek, Inc. recently announced the availability of their new cable reel product line. Magnetek cable reels are designed to be mounted on moving machinery and used to supply power for the automatic winding of flexible power or control cables. The Company offers both spring driven and motorized electric cable reels, as well as slip ring assemblies.

Available in 5 sizes, Magnetek's Industrial Duty Spring Reels provide a cost-effective, pre-engineered solution for general purpose applications such as overhead material handling cranes, mobile cranes, construction cranes, emergency and rescue vehicles, monorails, excavators, and welding systems.

Mill Duty Spring Reels, available in a multitude of sizes, are designed for optimum performance on overhead cranes, monorails, and magnet cranes operating in rugged environments such as mills, foundries, and other heavy-duty industries.

Magnetek's Motorized Cable Reels are ideal for long travel lengths and high voltage applications such as log handling gantry cranes, port gantry cranes, mobile excavators, ship-to-shore cranes, deck and construction cranes, particularly on runway motions, and hoisting equipment of all types.

Custom engineered slip ring assemblies are also available for any size or configuration and deliver consistent power to rotating components, ensuring continuous revolution. Communication and fiber optic slip rings are also available. Magnetek cable reels may be packaged with any of the Company's industry-leading power and motion control products.

Source: Magnetek

 S82433



## MAKE A SUCCESS OF YOUR VISIT WITH NEW MOBILE APP FOR CONEXPO-CON/AGG & IFPE

CONEXPO-CON/AGG and IFPE 2017 have released a new mobile app, powered by CAT, to help attendees efficiently pre-plan their show visit and stay connected onsite.

The new CONEXPO-CON/AGG & IFPE show app is enhanced with beacon technology and features interactive 3D contiguous maps to help attendees more easily navigate the show floor.

The show app continuously synchs to the online show planner where attendees can create a personalized agenda of can't-miss exhibits, education and meetings, and edit it pre-show and onsite.

Attendees can also use the CONEXPO-CON/AGG & IFPE show app to:

- Stay connected with real-time show notifications
- Access the shows' high-value news content
- Participate in gamified show activities to earn prizes
- Network with fellow attendees

- Share updates, photos and video via social media
- Search for exhibitors by company name, type of product or market area, booth number, geographic location, location on the show floor and exhibitors new to the show
- Find new products faster through the New Products and Technologies exhibitor preview and the new Tech Experience participant preview
- Check out education sessions (including content and speaker details).

"Customers are increasingly turning to mobile platforms for convenience and

ease of use," said George Taylor, Vice President of Caterpillar's Marketing & Digital Division. "Cat is excited to power the trade show's first mobile app enhanced by beacon technology, helping attendees make the most of their time in Las Vegas."

To download, search CONEXPO-CON/AGG or IFPE in your mobile app store.

CONEXPO-CON/AGG and the co-located IFPE exhibition will be held March 7- 11, 2017 at the Las Vegas Convention Center in Las Vegas, Nevada, USA.

Source: Association of Equipment

Manufacturers

GL20401

## InfraStructures

InfraStructures is the only single, bilingual magazine reaching buyers and specifiers in the construction, public works, and natural resources industries throughout Canada. For more information or to inquire about how we can assist you in informing our readership about your products and services, visit us at [www.infrastructures.com](http://www.infrastructures.com)

# Quard® WEAR PLATE



## INCREASED WORKABILITY FOR SUPERIOR PRODUCTIVITY

NLMK North America Plate, LLC  
333 Rouser Road, Suite 104  
Moon Township, PA 15109  
Ph. +1-412-203-4162, ext 3002  
Fax. +1-724-308-4124

[www.QUARD.ME](http://www.QUARD.ME)

Quard® is a quenched and tempered hot rolled plate with high resistance to abrasive wear and impacts.

- available from 3.2mm thickness
- excellent cold forming properties and weldability
- superior workability, tight tolerances, surface finish





# PE100+ Association Launches Online Assistant for Trenchless Pressure Pipe Installation

An online guide that will help civil engineers identify the most suitable trenchless methods for installing “PE100” high density polyethylene (HDPE) pressure pipe has been launched by the PE100+ Association. The association, whose aim is to promote a consistent and high level quality in production and use of polyethylene for PE100 pipes, is made up of HDPE producers from around the world.

The pipe designation PE100 is based on the long-term strength of the material, known as minimum required strength (MRS) of at least 10 MPa in accordance to ISO 9080.

The new “No-Dig Technical Guide” covers new installation and rehabilitation of existing water and gas pipelines using trenchless methods. It was developed by the PE100+ Association in collaboration with co-sponsors TEPPFA (the European Plastic Pipes and Fittings Association); independent Swedish pipe pressure testing

institute Exova; UK-based Radius Systems, which offer solutions spanning the entire pipe lifecycle; and Downley Consultants, a provider of global business and engineering consulting services in trenchless technology and geosynthetics.

The online tool guides users through a decision-making process based on the hydraulic capacity and pressure requirements of the pipeline and the physical and geotechnical conditions of the project. It then calculates the diameter and SDR (Standard Dimensional Ratio, the ratio of outside diameter to wall thickness) of PE100 pipe necessary. It also identifies feasible methods for installation of the pipe.

Users of the guide can access in-depth information to help them better understand the capabilities of the various installation methods, as well as practical aspects such as cleaning and inspection, excavation and space requirements, end fittings, and safety. For each method, links are provided



to enable the user to contact suppliers of materials and equipment and to find more information about the technologies and their applications.

“PE100 pipe is at the heart of water and gas distribution systems all around the world, so it is critical that designers and engineers make the right decisions when they develop projects for new trenchless pipe installations or rehabilitation of old pipelines,” says Hans Pierik, president of

## Robit Launches World’s Widest Hammer at CONEXPO-CON/AGG

Robit Group and its UK subsidiary BulrocRobit will reveal their new flagship large hammer, the Bulroc Robit Hyper 331, at CONEXPO-CON/AGG in Las Vegas.

The high-power hammer extends the group’s down-the-hole (DTH) hammer range from 25 mm to a hefty 838 mm.

The Hyper 331 features the largest piston on the market of any size DTH hammer, with its impressive 1552 kg. This, coupled with a long piston stroke and optimized impact frequency, make it the most powerful hammer out there. Robit Group now offers the smallest and largest DTH hammer in the market.

The Hyper 331 operates with foot valveless bits designed for 838 mm up to 1,320 mm diameter holes over a wide range of operating pressures. The Hyper 331 is designed to transfer maximum energy to the button bit and comes with a highly durable shank as a standard.

“We wanted to maximize the power of the new hammer, making it the most powerful in the market, especially in piling

applications where the drill hole sizes and performance requirements are constantly increasing. Therefore we maximized the power in all aspects of the technical design,” says Frank Pettinger, BulrocRobit Product Development. “Our target was to make a hammer that outperforms the other large DTH hammers in the market, and it is hoped that we’ve succeeded with flying colors.”

BulrocRobit, traditionally known for the quality and performance of its large DTH hammers has been developing the 838 mm hammer for some time. Now the product has been finalized and tested and is ready for global sales and supply. The first hammer has already been sold to a customer in America, so the hammer that will be displayed at CONEXPO-CON/AGG will get to work quite soon after the show.

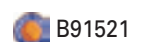
Robit Group will also be displaying the widest offering of its products at CONEXPO-CON/AGG. Naturally the full set of casing systems, mining and quarrying hammers and DTH bits from DTARobit as



well as Robit Top Hammer products and their digital services, launched in 2016.

Robit Group is a rapidly growing company in the drilling consumable market segment. It has 19 sales and service points worldwide and 5 manufacturing companies in the U.S., Australia, South Korea, UK and Finland.

Source: Robit Plc



## Morbark Introduces Partnership, Debuts Trommel Screen at COMPOST2017

the PE100+ Association and Global Marketing Manager at SABIC. "Our partners and PE100+ have spent a lot of time and effort ensuring that the No-Dig Technical Guide will enable them to make those decisions. This guide will help users decide whether or not trenchless techniques can be used to install PE100 on a specific project, which techniques are the most effective, and what key points need to be considered in using them."

PE100 is the preferred pipe material in small and medium diameter pressure networks in many countries. It is also ideally suited for use with a range of trenchless technologies. Trenchless technologies are often the most efficient and cost-effective, and least disruptive, methods to use.

Source: PE100+ Association

Looking for a supplier's website?  
Visit [www.infrastructures.com](http://www.infrastructures.com)

Morbark, LLC demonstrated a trommel screen at this year's COMPOST2017 show, the U.S. Composting Council's Conference and Tradeshow, held January 24-26, 2017, in Los Angeles, California.

Morbark has entered into a partnership with Pronar, a company based in Poland that specializes in the manufacture and sale of machinery and equipment for agriculture, municipal services and transportation industry.

"Morbark has the largest and broadest product lines for the recycling market," said Michael Stanton, Morbark Industrial Products director. "Expanding our product offerings further by partnering with Pronar to provide high-quality mobile trommel screens greatly benefits our customers who wish to expand their capabilities."

Available in 4 sizes, these mobile trommel screens, which will be co-branded



Morbark and Pronar, are perfectly suited to work with a wide variety of materials, including soil, compost, municipal waste, coal, aggregate and biomass. The easy-to-use electronic controls allow the operator to tailor the operation parameters to the materials to be separated. A variety of drums are available to meet the customer's specific needs, with round or square holes and of any mesh size.

Source: Morbark, LLC

 S5682

## New Division, New Products, Larger Presence at CONEXPO-CON/AGG for McCloskey International

McCloskey International will clearly demonstrate its continued growth with a significant increase in its presence at CONEXPO-CON/AGG in Las Vegas, Nevada, march 7-11, 2017.

The 1,858 m<sup>2</sup> space will showcase the newest products from McCloskey International, as well as serve as a launch point for the new division – McCloskey Washing Systems, and a 300 m<sup>2</sup> hospitality and information pavilion will provide a venue for customers to meet and mingle with dealers from around the world.

A 50% increase in floor space over 2014 will allow McCloskey to showcase new products alongside the new wash plant, including stackers, screeners and crushers.

CONEXPO-CON/AGG will see the unveiling of the first Sandstorm washplant. The new MWS products on display at Silver Lot S5115 will represent McCloskey's growing diverse range of materials and mineral washing products. The new product line-up features the much anticipated Modular Wash Plant, Sandstorm™. This modular

chassis-mounted scalping unit brings operators a well-proven cost-effective and durable machine in a modular all-electric format, ideal for C&D recycling applications.

"The new product launches are evidence to our ongoing commitment to providing reliable high quality and highly productive equipment that allows customers to meet today's stringent specifications for cleaner material," said Sean Loughran, director, McCloskey Washing Systems.

"We are thrilled about unveiling our modular wash plant range at CONEXPO. Our engineers have been working on finalizing design and specification of Sandstorm and it's ready to be launched onto the world stage."

McCloskey Washing Systems will have a team of technical engineers on-site during the show.

Also on display will be the new SDX-130 telescoping stacker. The SDX-130 desegregates and maximizes stockpile capacity using a robust, fully automated and highly

flexible CAN based control system to provide optimal control of material quality.

McCloskey International will introduce a new R155 model to its lineup of industry-leading screening equipment, aiming to provide maximum load flexibility and capacity to its customers. Designed to accommodate a larger variety of loaders, the R155 is able to work in a variety of sites around the world. The R155 will be displayed feeding into the popular J50V2 jaw crusher.

McCloskey International will also be actively recruiting at CONEXPO-CON/AGG to meet the demands of its rapid expansion worldwide. Positions available will range from technical to sales, engineering to production. A campaign supporting the drive for talented and experienced candidates wishing to establish their own business "You Are Ready" will also be featured at the show.

Source: McCloskey International  
McCloskey Washing Systems

 S5014/S5115



# ASV Introduces VT-70 Vertical Lift Compact Track Loader

ASV LLC introduces its first mid-frame, vertical lift compact track loader, the Posi-Track VT-70. The machine features a vertical lift loader linkage for applications requiring extended reach and level loads, such as loading pallets and handling hay bales. The VT-70 features best-in-class rated operating capacity, cooling systems and hydraulic efficiency. The compact track loader excels at lift, carry and load tasks as well as heavy digging in industries such as agriculture, construction and excavation.

The VT-70 boasts industry-leading serviceability, featuring a swing-out door and cooling system along with a 3-panel hood arrangement that allows total access to the engine, filters and other daily checkpoints.

ASV built the VT-70's auxiliary hydraulic system to operate efficiently with an optional 107.5 l/min high flow and 227.5 bars. The machine includes large line sizes, hydraulic coolers and direct-drive pumps – rather than belt-driven pumps – transferring more flow and pressure

directly to the attachment and preventing power loss. This design optimizes performance so operators can run attachments more efficiently than higher-horsepower competitive units. As a result of belt-driven pumps and restrictions in their hydraulic systems, many competitive machines lose

as much as 30% of their power.

The VT-70 features a rated operating capacity of 1,055 kg and a tipping load of 3,016 kg. It is 168 cm wide and has a 3.2 m lift height. Standard joystick controls make operation easy and intuitive, while a self-leveling system allows attachments to stay



## Axiomatic Releases a CAN-Ethernet Support Package

Axiomatic releases a CAN-Ethernet Support Package (SSP) for developing application software when working with the AX140900 CAN/Ethernet Converter.

The SSP is a set of software modules and examples for users of the AX140900 Ethernet-CAN Converter. It is written in a standard C programming language. The modules provide support for the Axiomatic Proprietary Communication and Discovery Protocols. The Communication Protocol is for transmitting CAN messages over the Ethernet TCP/IP network and the Discovery Protocol is for locating the converter on the LAN. The SSP is useful for programming embedded systems and for application programming in Windows or Linux.

The CAN/Ethernet Converter, P/N: AX140900, converts CAN frames into UDP or TCP IP datagrams and sending them over the Ethernet network. The device can also convert UDP or TCP datagrams into CAN frames. It supports a high-speed CAN with a baud rate of up to 1Mbit/s and a fast 100Mbit/s Ethernet. All standard and extended CAN frames, including data and

remote frames, are supported. The power can be passed through to the CAN port. Protection is provided. To ensure low latency in processing CAN and Ethernet messages, the converter software runs under control of a real-time operating system.

The converter is designed to work on off-road machinery or in a harsh industrial environment with power transients, high humidity and vibrations. It can be used out-of-the box without the SSP for interfacing between Ethernet devices and the machine CAN network. One or more converters can be installed depending on the number of CAN busses in the system.

The converter contains a web server to setup configuration parameters and monitor the internal state of the converter using a web browser. The user can remotely monitor and configure Axiomatic CAN-based controllers over the internet using the AX140900 CAN/Ethernet Converter together with the Axiomatic EA and CAN-



Scope software. We call this service tool EA-Connect.

Other Axiomatic connectivity products include the Ethernet Switch as well as the CANBluetooth and CAN-Wifi converters.

Axiomatic's product will be showcased as part of a system integration in the Bailey International LLC booth at IFPE, which will be held in conjunction with CONEXPO-CON/AGG, March 7-11, 2017, in Las Vegas, Nevada.

Source: Axiomatic Technologies Corporation

Bailey International LLC  S83240

## KEESTRACK at CONEXPO-CON/AGG

at a set position while lifting. Operators can use the unit with all standard attachments, such as pallet forks, buckets, snow blades and brush cutters. An optional turf track allows for operation on highly manicured



surfaces, such as golf course greens, with minimal risk of damage. A 42 cm aggressive track is also available for a lower ground pressure of 20.5 kgf/m<sup>2</sup> along with increased traction and flotation.

Source: ASV, LLC

(Manitex International booth)  G4464

KEESTRACK, the Belgium-based mobile crushing and screening equipment specialist sees CONEXPO-CON/AGG 2017 as a perfect opportunity to strengthen its position on the North American market and to present highly flexible solutions for contractors in the recycling and aggregates industry.

KEESTRACK America was founded 10 years ago, to support the expanding dealer network on the North American markets. The

company recently opened a new facility in Dallas, Texas. Focussing on aftersales and parts activities the new headquarter will form a crucial element of KEESTRACK's strategy to become the leading supplier for crushing and screening contractors in the recycling and aggregates industries.

Highlighting this integral approach at CONEXPO-CON/AGG will be the new H4 tracked cone crusher. The light and compact plant features the KT-H4 cone crusher, adapted and supplied by a world-leading cone specialist. The fully automated unit

produces up to 250 t/h at maximum feed sizes of 18 cm. The KEESTRACK H4 features a hybrid diesel-electric drive concept



(460 hp Tier 4 final diesel /330 kVA genset / 135 kW E-drive for crusher). This guarantees economic fuel consumption and ease of maintenance through the wide use of electric motors on screens and conveyors.

KEESTRACK will also display its R3 and R5 tracked impactors. The machines at CONEXPO-CON/AGG both feature diesel-hydraulic drives with modern load sensing hydraulics.

Source: KEESTRACK N.V.

KEESTRACK America

 C33043

Advertise in the  
**FIRST** and **ONLY**  
trade magazine reaching  
users of heavy machinery  
and specialized equipment  
all across Canada!



The 2017 Media Kit  
is available for download on  
[www.infrastructures.com](http://www.infrastructures.com)

## Doka Displays Formwork, Advances in Technology at CONEXPO-CON/AGG

Doka North America will be exhibiting "More Than Just Formwork" at CONEXPO-CON/AGG 2017. Demonstrating the latest in concrete formwork technology, Doka will showcase wall, slab and climbing solutions and services ranging from engineering, field support, pre-assembly and project management. Additionally, Doka will display advances in technology, such as the Concremote sensors that enable contractors to strip formwork earlier than ever before. Concremote and Doka will also be featured in the new Technology Experience pavilion.

"Doka shows contractors the most reliable, cost-effective and advanced methods

for concrete construction today that are proven to provide safe, successful and profitable end results on their next high-rise, power, bridge, tunnel or infrastructure project," said Michael Schaeffer, vice president of Sales North & South America.

Doka will be showing the next generation in climbing formwork technology, the Super Climber SCP system as well as the Dokadek panellized floor formwork system.

Also, capabilities in custom formwork applications and time-saving pre-assembly formwork can be seen, such as those used on Muskrat Falls and Keeyask Hydro generating facilities in Canada.

Source: Doka USA, Ltd.

 G1622



# Caterpillar Rolls Out New Machines and Technology at CONEXPO-CON/AGG 2017

At CONEXPO-CON/AGG 2017 Caterpillar will present its extensive line of machines and technology and its unmatched customer support capabilities. With 40 machines on display in 2 different exhibit areas totaling 5,575 m<sup>2</sup>, Caterpillar's presence is among the largest at the show. But it is not all about size. Cat® Connect Technologies for machine control and monitoring will share the spotlight with the iron it enhances – ranging from a skid steer loader to a 87 t excavator.

CONEXPO-CON/AGG 2017 marks the debut of 8 new Cat machines and 6 more machines introduced recently will be on display for the first time at an equipment show. The newest Cat machines to be displayed include excavators, wheel loaders, a dozer, an articulated truck, a telehandler and cold planers. Caterpillar will also

excavators lead their size classes in fuel efficiency. The 390F can be equipped with the industry's only integrated payload system for accurate truck loading. The 336F XE has the payload system as standard equipment, as is 2D GRADE – with the option of a number of integrated Cat Connect grade control systems.

New Cat wheel loaders are also in the spotlight. The new 986K on display will replace the H Series model and deliver lower cost per ton in earthmoving and ag-



features a new transmission and new Auto Shift system that allows the D6T to achieve fuel savings on the order of 20%, compared with the previous model. Fuel savings can increase to as much as 30% in light-load and finish-grading applications. The fully automatic system maintains production while optimizing fuel

efficiency. Additionally, the updated D6T now is equipped with GRADE with Slope Assist as standard equipment.

Another dozer is featured in a live demonstration shown in the Gold Lot exhibit. A D8T dozer in Peoria, Illinois, will be controlled remotely from the operator station in the exhibit. The new Cat Command remote control system for the D8T offers a choice of 2 operator interfaces – a portable Operator Console designed for line-of-sight use and an ergonomically designed Operator Station that can be located remotely when the dozer is equipped with the Command Vision System. Wireless connectivity enables the operator to work from a safe location, whether nearby or far away. In addition to the D8T demonstration, a Cat Command remote control system equips a 988K Wheel Loader shown in the Gold Lot exhibit. In addition



introduce new remote control technologies and connectivity technologies at the show.

In the large North Hall exhibit, the display will focus on excavating, grading, paving and aggregates mining and handling. The Gold Lot exhibit will feature small machines used in building construction. A handful of large machines displayed in the Gold Lot will represent general construction and aggregates product lines.

New machines to be displayed include the M317F Wheeled Excavator, a compact radius design that expands versatility and enhances productivity in tight work areas. The new Cat compact radius wheeled excavators deliver the same capabilities and efficiencies as their standard radius counterparts. The 390F and 336F XE Excavators, both with crawler undercarriages, have been updated to deliver improved productivity and lower costs. Both

gregates operations. The 950 GC will make its North American debut in the Gold Lot, where it will be displayed alongside the full-featured 950M. The 950 GC gives wheel loader owners a choice when determining the best machine for their business. In addition to the 950M, the 972M XE and 982M will be on display to highlight updates including new Cat Connect Technologies, additional operator comfort and safety features, and features that help reduce operating costs.

The new 745 Articulated Truck features an all new, class-leading cab with enhanced visibility. Innovative machine control features further improve operator efficiency and safety. The new stability assist system reduces the risk of rollovers, and the new Economy Mode reduces fuel consumption.

The updated D6T Dozer on display



to the big machines operating via remote control, a live demonstration of skid steer loader line-of-sight remote control will be conducted in the Gold Lot.

The full line of Cat paving products is represented at CONEXPO-CON/AGG, with emphasis on 3 new cold planers – PM825, PM622 and PM312. The new PM800 Series complements the previously released PM600 Series and features increased engine power for demanding applications. Increased weight and cooling capacity allow the PM800 Series to perform under the toughest of conditions. The PM300 Series is highly versatile, capable of urban and patchwork applications, small to medium road milling or where compact dimensions, optimum maneuverability and high production capabilities are required.

In addition to the big machines, Cat compact and building construction machines will be on display. The new TH514D

Telehandler sports a 3-section boom and a Tier 4 final compliant engine. The 14 m reach and 5,000 kg lift capacity are ideally suited for pick and place lifting. Cat D Series telehandlers will also offer new, innovative options such as a reverse object detection system, an advanced display



screen and a reversing camera.

Caterpillar also will present several innovative solutions available across its 14-model line of compact excavators. The 300.9D Versatile Power System (VPS) with H25 Hammer represents an ideal configuration for indoor demolition applications. Another unique solution is the 304.5E2 Extra Tool Carrier (XTC), which includes a skid steer loader coupler interface in place of the traditional dozer blade.

Source: Caterpillar

 N10924 / G4490

# GEOROCFOR<sup>INC</sup>

ACCESSORIES

## DRILLING SIMPLIFIED

Innovation/Quality/Adaptability



*Xs Drill<sup>®</sup>*

Overburden systems  
Drilling tools



MANUFACTURE  
OF DRILLING TOOLS  
FOR OVER 25 YEARS

GEOROCFOR  
PRODUCTS ARE  
USED AROUND THE  
WORLD IN  
CIVIL WORK,  
FOUNDATIONS,  
WATER WELL,  
MINING  
AND TUNNELING

[www.georocfor.com](http://www.georocfor.com)





The **power** to push

The **weight** for traction

Power: 100 HP  
Weight: 10 000 lb +

Call us for more information 450-379-5387  
2430 Principale Street, St-Paul-d'Abbotsford, QC J0E 1A0  
[www.vtcmfg.com](http://www.vtcmfg.com)



# More Flexible Gearboxes for Powerful Mobile Hydraulic Applications

Stiebel Drive Technology is exhibiting advanced drive solutions for greater energy efficiency and electric mobility applications at CONEXPO-CON/AGG in Las Vegas next month.

The shift towards new mobile hydraulic applications goes hand in hand with sophisticated and commercially effective systems which are capable of mastering the growing challenges under the toughest conditions. With their adaptable and high performance gearboxes, the specialists at Stiebel Drive Technology are developing the appropriate technologies – ones that also score in terms of energy balance.

One convincing drive solution is the Stiebel type 4652 transfer gearbox which is used in mobile tracked drilling rigs for instance. The massive casing ribbing and the geometric offset of the drive/take-off shafts deliver an improved energy balance. This normally renders an additional oil cooler unnecessary. With its Pmax of 700 kW, T2max of 3300 Nm and maximum rotational speed nmax of 2500 rpm, sustainable and economical drilling operations are supported.

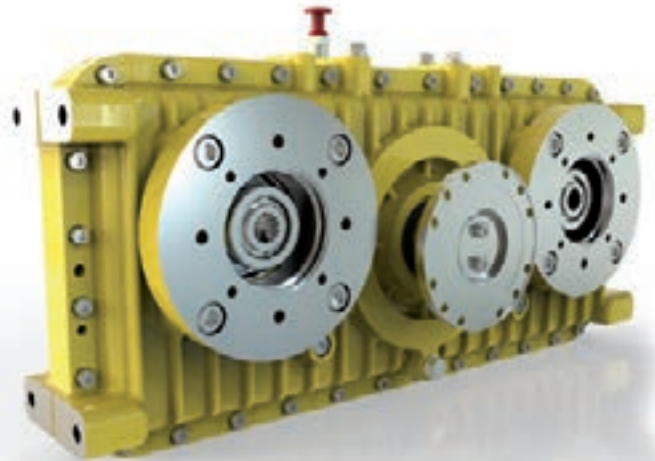
A further development is the compact type 4669 summation gearbox. This unit can be fitted directly to 2 integrated electric motors. Thanks to the high degree of production tolerance (radial and axial runout) of the power transmitting components, the massive block casing, the manufacture of assemblies and the excellent quality of the gearing, a high degree of operational reliability and smooth running are ensured. Stiebel has developed the summation gearbox primarily as a sustainable tractive force for medium and heavy-duty electric commercial vehicles and mobile working machines. The solution can alternatively be designed to accommodate a generator which is driven via a cardan flange.

Stiebel Drive Technology is also providing highly adaptable support for diverse ideas in the area of mobile hydraulics with its single-stage type 4382 transfer gearbox from the P2000 series. Following the proven modular design principle, this torsionally stiff gearbox offers a range of different mounting variants. Connection is possible via a cardan flange or SAE case. On the take-off side there are

3 pump connections with freely selectable SAE connectors. With its weight of 200 kg and block casing, this compact gearbox offers space-saving integration possibilities. The lubrication of all relevant components is undertaken by a special system with internal ribbing and oil grooves. Technical facts relating to the pump drive: Maximum torque per drive is 1500 Nm with maximum rotational speed up to 3000 rpm at a motor power of 530 kW and a transmission ratio of  $i = 0.6572$  to 1.5217.

The type 4395 transfer gearbox with integrated, drive-side clutch offers many different drive options, such as diesel-electric hybrid solutions for instance. The

very large shaft spacing of the power take-off shafts in inline configuration (achieved with offset intermediate shafts) allows large motor components up to SAE size 0 to be fitted, both in drive and direct drive mode, and simultaneously hydraulic drives up to SAE size E to be driven by the drive shafts on both sides. The benefits are particularly apparent in terms of the



## Link-Belt Will Debut its All-New 228 HSL at CONEXPO-CON/AGG

Link-Belt will debut the all-new 117.2 t 228 HSL at CONEXPO-CON/AGG, March 7-11, 2017, in Las Vegas, Nevada. The 228 builds on the legendary success of the job-proven Link-Belt HYLAB lattice boom crawler lineup, and takes another step forward with transportability and attachment versatility. These feature advancements, along with strong capacities, will make this crane the clear choice in its class.

The 228 HSL was born with transport versatility in mind. It can move under 54,431 kg as an assembled machine, with tracks on. "There are markets that will appreciate the increased capacity with these transport weight options," said Link-Belt product manager for Lattice and Telescopic Crawler Cranes, Scott Knight. "Remove the side frames and easily achieve a transport weight under 36,287 kg."

Source: Link-Belt Construction Equipment Company



## SQL Database Capability with the LOADMASTER α100 from RDS!

optimized – and therefore environmentally friendly – energy and fuel consumption figures.

A different solution is offered by the type 4611 pump drives which are equipped with 2 different transmission ratios at the pump take-offs. This facilitates optimum output speeds for various types of hydraulic pump. The Stiebel gearbox is ideally suited for use in snow groomers or utility vehicles.

With these and other ideas, such as the B2000 intermediate gearbox range which has undergone continuous development and proven itself in operation for 40 years, Stiebel Drive Technology continues to set the standards in the field of drive technologies. Visitors to the CONEXPO-CON/AGG trade show will discover the benefits for themselves.

Source: Stiebel Drive Technology



S81405

The LOADMASTER α100 has been designed to operate within the fastest loading environments and in the toughest of conditions, providing the weight of cargo to be packed into a container.

It is an automatic catch weighing instrument, MID class Y (b) type approved.

The RDS LOADMASTER α100 uses a 7" color, resistive touch screen display and additional physical keys providing a modern and ergonomic operator interface.

The system can be retrofitted onto forklifts with no major modifications required to the machine.

The system measures hydraulic pressure. The pressure signals are captured and filtered through a weighing "arc" provided by reference and direction sensors.

All signals are processed in the RDS Smart Box and the resultant weight calculation is sent to the terminal mounted in the cabin.

SQL database capability with up to 8 reference fields provides virtually unlimited inputs of products, customers, trucks, hauliers, locations, destinations, mix blends and notes.

Video input for switching head unit into reversing camera mode removes the need for additional screen, releasing valuable cab space.

The Loadmaster α100 is offered by Innotag throughout Canada.

Source: Innotag Distributions Inc.



**ACCESSORIES MACHINERY LIMITED**  
**Phone: 1-800-461-1979**  
**Fax: 1-877-544-5030 • Internet: www.aolaml.com**

**BUCHER schörfling**  
**Full-Size and Compact Vacuum Sweepers From 1 to 10 m³**  
**USED STREET SWEEPERS VACUUM OR MECHANICAL**  
**www.usedsweeper.co**

**SWEEPERS AVAILABLE FOR RENT**

- Replacement Parts for Most Makes of Sweepers
- Street Sweeping Brushes
- Weed Brushes

**On-Board Weighing System**  
**Weighlog 200**

**RDS TECHNOLOGY**  
INDUSTRIAL PERFORMANCE GROUP

**1-800-363-8727**

**INNOTAG**  
**INDUSTRIAL**

2080 Pierre-Louis-Le Tourneur Street, Beloeil, QC J3G 6S8 • 450-464-7427  
[www.innotag.com](http://www.innotag.com) • [f /innotagdistributionsinc](https://www.facebook.com/innotagdistributionsinc)

- Ensures correct loading of vehicles or product
- 5 display channels
- Static and dynamic weighing modes
- Printer compatible



## Visit DSC Dredge at CONEXPO-CON/AGG 2017

Louisiana-based DSC Dredge, LLC, will have its experts available at CONEXPO-CON/AGG, March 7-11, 2017, in Las Vegas, Nevada. With many of DSC's custom dredge solutions on display, visitors will have the opportunity to discover how DSC's advanced dredging technology has benefited customers worldwide – and discuss how DSC's expertise will ultimately result in the exact right dredge for their own unique applications, ultimately boosting their efficiency and lowering their operating costs.

DSC believes that every dredge begins with a story. Every dredging application is different, and every dredge operator works under unique conditions. DSC's dredging solutions are rooted in a number of base models that are then customized to match the customer's goals. Prior to making any recommendations, the company executes a rigorous process of talking with customers to establish

the immediate and long-term application parameters and obtain the necessary information to recommend the right dredge.

suction dredges of all sizes and applications. DSC units are in use throughout the world in construction, environmental, min-



This information may include factors such as dredging depths, types of materials, distance and elevation to discharge, portability requirements and access to power grids.

For more than 20 years, DSC has focused its expertise on the design and manufacture of customized portable cutter

ing, navigational, recreational, restoration and specialty applications.

DSC's base dredges include 6 different model lines, designed for different basic applications, which are further customized for specific customer requirements. The Marlin Class deep mining dredge, with its underwater pump system and high-torque

**NEVER ATTACH  
BANNERS  
TO SCISSOR LIFTS**

**BANNERS CAN ACT LIKE A SAIL IN STRONG WINDS**

**IPAE**  
THE WORLD AUTHORITY IN POWERED ACCESS

[WWW.IPAE.ORG/ANDYACCESS](http://WWW.IPAE.ORG/ANDYACCESS)

Rev. 1.0 12/2014

**MANULIFT** ARCHITECT OF YOUR SUCCESS

**MERLO** **SKYTRAK** **snorkel**

[Facebook](#) [LinkedIn](#) [Twitter](#)

**1 877 641-8355**

## New York City Department of Sanitation to Demo DME Truck

cutter drive, has been designed as an efficient method for excavating deep mining deposits. The Shark Class cutter suction dredge is tough, yet portable. It is most commonly used in the sand and aggregate production arena. Often called the contractor's "dream machine", the Barracuda Class dredge features a swinging-ladder design, used most often in waterway maintenance and lake revitalization projects. DSC's Moray Class conventional/swinging-ladder dredge was conceived around the concept of a versatile design in a smaller portable package that is unmatched in the industry, and often used in environmental cleanup and irrigation applications. Rounding out the line are the Badger Class and the Wolverine Class dredges, designed for the contractor that are fully functional by one operator. Several of the DSC models are available with electric power for operations requiring sustainable attributes.

Source: DSC Dredge, LLC  C20523

In collaboration with the New York City Department of Sanitation (DSNY) and Oberon Fuels, Mack Trucks recently began a demonstration to test the performance of a Dimethyl Ether (DME)-powered Mack® Pinnacle™ model. DSNY is the first Mack customer to evaluate the non-toxic, clean-burning alternative fuel.


DME delivers the same exceptional performance as diesel fuel and generates no soot. The fuel offers many benefits, including that it can be made from multiple sustainable feedstocks, such as food waste, animal waste, grass clippings and natural gas. It offers the same performance and energy efficiency as diesel. DME does not require cryogenic temperatures or high tank pressures.

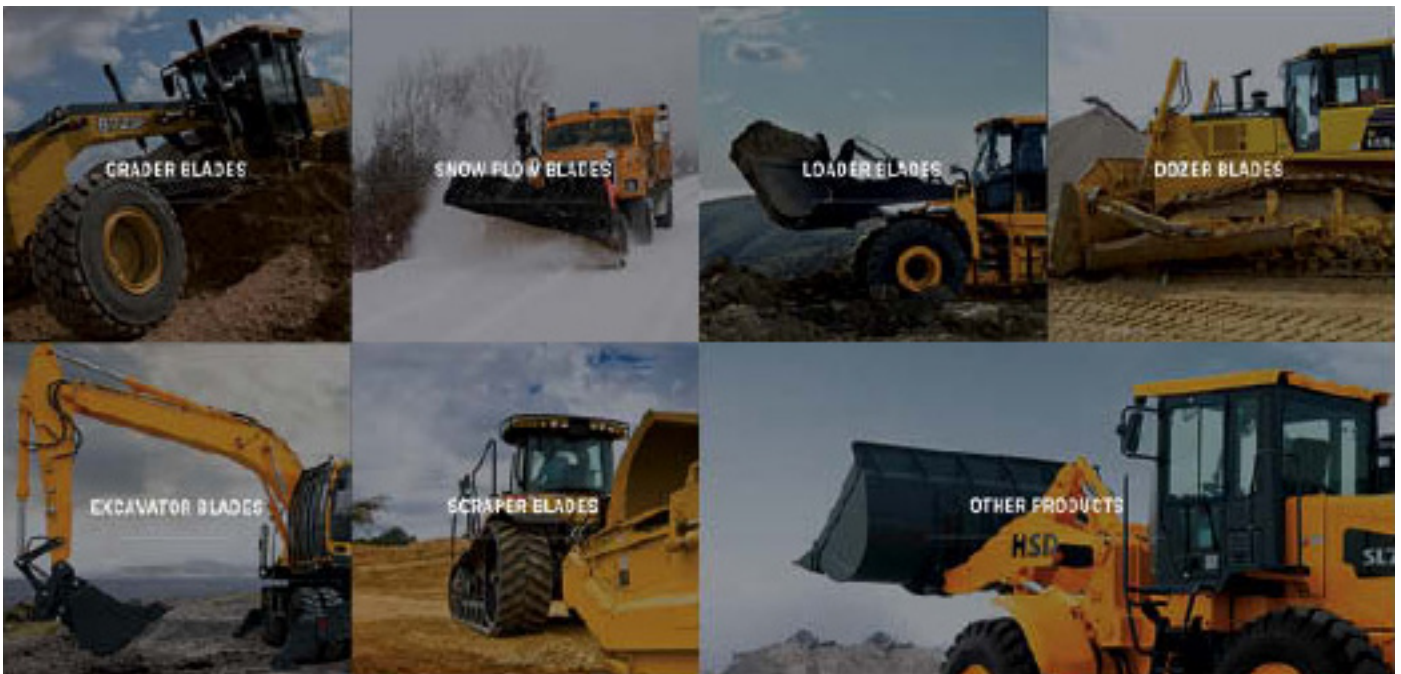
The Mack Pinnacle Axle Back model is equipped with a Mack MP®8 13 l engine and the Mack® mDRIVE™ automated manual transmission.

New York City recently announced a vision to reduce greenhouse gas (GHG) emissions by 80% in 2050 compared with 2005. In order to achieve this goal, the city must reduce 43 million t of GHG emissions. When produced from organic waste, DME can reduce GHG emissions.

Source: Mack Trucks



 S61108



**VBL**™ ValleyBlades  
LIMITED



March 7-11, 2017 Las Vegas, NV  
BOOTH C28443

www.valleyblades.com • Contact your local Valley Blades Distributor



# Mack® mDRIVE™ Transmissions Gain New Performance, Safety Features

Mack Trucks recently introduced Mack® mDRIVE™ rolling start and auto neutral, 2 new features designed to improve the jobsite performance and safety of trucks equipped with Mack's mDRIVE and mDRIVE HD automated manual transmissions. Both features are standard on all Mack mDRIVE and mDRIVE HD transmissions. Mack made the announcement at World of Concrete 2017 in Las Vegas.

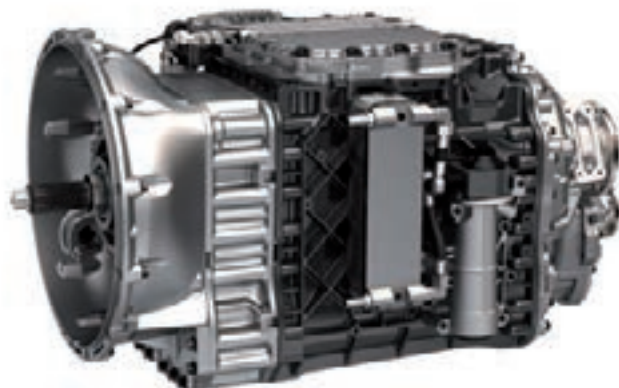
Mack mDRIVE rolling start allows drivers to shift the transmission into drive without pressing the truck's service brakes. This eliminates the possibility of creating a bump in the paving surface, which is a critical benefit for paving applications.

Several construction applications, including concrete mixers, rely on remote throttle controls. By automatically shifting

the mDRIVE into neutral when the parking brake is set, Mack mDRIVE auto neutral helps improve jobsite safety by reducing the possibility of the truck moving due to throttle application.

Engineered to work exclusively with Mack's MP® series engines, mDRIVE and mDRIVE HD automated manual transmissions are a key component of the Mack integrated powertrain, boosting efficiency, productivity and performance.

Mack mDRIVE and mDRIVE HD penetration reached record levels in Mack Pinnacle™ Axle Back and Mack Granite®



models sold in the U.S. and Canada. With the new low-ratio creeper gears and these new features added, Mack is on track to double mDRIVE HD penetration in Granite models in 2017.

Originally introduced in 2010 for highway applications, the Mack mDRIVE transmission transformed trucking by eliminating traditional shifting. With no clutch pedal or shift lever to work, drivers can remain focused on the road ahead. mDRIVE transmissions monitor multiple driving variables through sophisticated software to deliver smooth shifts and automatically select the best gear for conditions. Mack made mDRIVE standard in Pinnacle models in 2014.

The mDRIVE's benefits did not go unnoticed by vocational customers, who sought the efficiency and performance improvements in construction applications. In response to their requests, Mack launched the rugged mDRIVE HD in 2015 and made it standard in Granite models. With reinforced internal components, the mDRIVE HD can withstand the tough demands of vocational applications.

In 2016, Mack expanded its mDRIVE HD offer with 2 new versions featuring low-ratio creeper gears. The Mack mDRIVE HD 13-speed offers a low reduction gear ratio designed for easier starting on steep grades or when the truck is under heavy load. The Mack mDRIVE HD 14-speed, available only in an overdrive configuration, adds a second ultra-low-speed reduction gear designed for curb pouring applications or low-speed, heavy-haul maneuvering. Both transmissions offer up to 4 reverse gear ratios.

Source: Mack Trucks



## Keep It Clean! (Your Diesel Fuel, That Is)

Fuel quality is critical to keep Tier 4 engines running smoothly, and the Association of Equipment Manufacturers (AEM) has released an infographic to help equipment owners and users keep their machines up and running.

The AEM "Get CLEAN on Fuel" infographic outlines 5 key actions that help protect Tier 4 engines "because while the new engines reduce diesel emissions and protect our health and the environment, the fact is they are rather finicky about fuel," said William "Bernie" Bernhard, AEM technical and safety services manager.

Mr. Bernhard explained that today's Ultra-Low Sulfur Diesel (ULSD) is very different from the diesel of just a few years ago.

"Among other things, it is subject to change and contamination as it moves from the refinery to the engine, making storage, temperature, age and filtration, and related factors critical in maintaining fuel quality," he said.



### 5 STEPS TO MAINTAIN FUEL QUALITY

The new AEM fuel-quality infographic relays 5 quick tips using the **CLEAN** acronym, accompanied by actionable guidelines:

- C** - Commit to understanding your T4 engine
- L** - Learn the facts about today's fuel
- E** - Evaluate your fuel source and fuel handling
- A** - Always follow manufacturer guidelines
- N** - Never take your role for granted

Source: Association of Equipment Manufacturers (AEM)

## Volvo Trucks Awarded NJPA Contract for Truck Chassis

Volvo Trucks North America has been awarded a contract by the National Joint Powers Alliance® (NJPA) to offer Class 8 chassis to the more than 50,000 NJPA members. Under the contract, NJPA member agencies can now purchase Volvo VNM, VNL, VNX and VHD models.

The NJPA is a public agency that creates national cooperative contract purchasing solutions on behalf of its member entities across the U.S. and Canada. NJPA contracts are solicited across North America and are competitively awarded on behalf of NJPA current and potential government and education members agencies.

"Volvo Trucks is pleased to offer our full range of heavy-duty trucks through the NJPA," said Jeff Lester, senior vice president of sales for Volvo Trucks North America. "Member agencies can specify the Volvo model that best fits their needs by utilizing Volvo's complete specification offering."

By consolidating the efforts of numer-



ous individually prepared bids to a single, shared process, these cooperative contract opportunities offer both time and money savings for NJPA members. NJPA members can use the chassis contract to streamline their truck bid process and take advantage of NJPA's rigorous selection criteria and attractive pricing.

All Volvo truck chassis procured under the NJPA chassis contract come with Volvo Trucks' suite of uptime services, which offer real-time vehicle status updates, case

management and 24/7/365 technical support. Additionally, member agencies can work with and take delivery through their local Volvo Trucks dealer.

The Volvo Trucks contract (081716-VCE) is effective now and available to NJPA members throughout the U.S. and Canada. To learn more about the Volvo models available under the NJPA contract contact your nearest Volvo Trucks dealer.

Source: Volvo Trucks North America

ADF Diesel

Distributor of replacement components for all your equipment.

THE EVIDENT CHOICE FOR YOUR

DIESEL ENGINE

ENGINES AND TRANSMISSIONS	TURBOS AND FUEL INJECTION	PARTS AND ACCESSORIES	SEATS	AND MUCH MORE!
				TRY US TODAY!

8 BRANCHES (QUÉBEC AND ONTARIO)

1 (855) ADF-7770

WWW.ADFDIESEL.COM























# Autocar Trucks Awarded NJPA Contract for Truck Chassis

Autocar Trucks recently announced it has been awarded a contract by the National Joint Powers Alliance® (NJPA) to offer Class 7 and 8 chassis to the more than 50,000 NJPA members. Under the contract, NJPA member agencies now have access to purchase Autocar refuse trucks, street sweepers, asphalt trucks, hoists, grapples, salt spreaders, plows, and other utility and maintenance trucks needed in the public works industry. NJPA contracts are solicited across North America and are competitively awarded on behalf of NJPA current and potential government and education member agencies.

These cooperative contract opportunities offer both time and money savings for their users by consolidating the efforts of numerous individually prepared solicitations to one national, cooperatively shared process.

"Now even more municipalities can choose the best truck for their needs by leveraging the NJPA chassis contract,"

said Dan Vermeer, Autocar's vice president of Sales and Market Development. "The NJPA contract gives fleet managers a trusted option validated by their sister cities, with the full opportunity to specify a custom-engineered chassis and select their preferred body to fit their unique application and operations."

NJPA members retain the full, unlimited use of the Autocar Solutions® service command center for technical support, 24/7.

The Autocar Trucks contract (081716-ACT) is effective now and available to NJPA members throughout the U.S. and Canada.

National Joint Powers Alliance (NJPA) is a governmental unit committed to



providing cooperative solutions assisting governmental, educational, and nonprofit entities as they strive for efficient public service. NJPA was created in 1978 by Minnesota Statue 123A.21, Subdivision 1 as one of Minnesota's 9 service cooperatives and offers a variety of cooperative programs and services for its members in the U.S. and Canada.

Source: Autocar Trucks

# ASV RT-120 Forestry Compact Track Loader Brings Leading Size, Power and Durability to the Forestry Industry

ASV, LLC introduces the Posi-Track RT-120 Forestry, the largest and most powerful compact track loader in the industry. The large-frame RT-120 Forestry features more power and productivity with less ground disturbance than any other machine in its class.

Maximum power and torque, along with unparalleled cooling capacity, make the RT-120F capable of using the largest attachments for long periods of time without bogging down or overheating. The rugged machine makes mulching, brush cutting and highway and utility work faster and easier. Like all ASV equipment, the RT-120F includes maximum efficiency hydraulics and innovative, high-capacity

cooling systems that allow for more work done in less time. In addition, the machine achieves versatility on all surfaces – from mud and brush to ice and snow – using ASV's patented Posi-Track undercarriage. It provides industry-leading serviceability, ground clearance, ground pressure, traction and track life.


"ASV is on a mission to earn recognition as the industry leader in the high end of the market with our larger machines by offering superior performance, productivity and ROI. Our customers come first, that's why we make sure they have machines that stand up to the tough jobs they face every day," said Jim DiBiagio, ASV general



manager. "The RT-120 Forestry easily meets that demand with its size, strength and rugged design. We really mean it when we promise maximum performance with no compromises!"

The RT-120F is also available in dirt and road profiling configurations.

Source: ASV, LLC

(Manitex International booth)  G4464

You can watch videos related to some of our featured stories on [www.infrastructures.com](http://www.infrastructures.com)

Watch for the  logo



**A legacy of hard-working trucks since 1897**

**A newcomer in the Class 7 & 8 Cabover category**

The oldest North American truck brand, Autocar® enters the Class 7 & 8 cabover market with a range of trucks designed for heavy work such as road maintenance and heavy pick-up and delivery, the Autocar Xpert.



The Autocar Xpert is designed to ensure the best sight lines in any cabover or conventional truck. The spacious cab features a huge windshield, side, and rear windows.

The Autocar Xpert can be equipped with an OEM dual steering system. With all controls placed either in the middle, or duplicated and mirrored on both sides.

The high performance dual steering gear system is designed for an extra tight turning radius, and the electrical system is designed for dual steer from the ground up, with no third party splicing into a wire harness.



Distributed by:

**Accessories Machinery Limited**  
[www.aolaml.com](http://www.aolaml.com)

**1-800-461-1979**



## Appointments

Global engineering and infrastructure firm **Gannett Fleming** named **Paul D. Nowicki, PE**, to the position of president and COO.

Paul Nowicki succeeds Robert Scaer who has been named to the position of chairman of the board and CEO. Mr. Nowicki is responsible for establishing Gannett Fleming's comprehensive goals for performance, leading the day-to-day direction and operations, and overseeing the overall performance of the company. He also oversees the daily operations of more than 60 offices worldwide. An exemplary leader, Paul Nowicki demonstrates an innate ability to engage employees and inspire them to deliver unprecedented results that drive firm growth and client satisfaction.

Mr. Nowicki served as Gannett Fleming's Southeast Region director from 2014 through 2016, during which time he directed operations for offices in Florida, Tennessee and Louisiana. He led a realignment of the region's business lines to focus on high-growth sectors, including earth sciences, water, transportation and construction services. He also established strong, multidisciplinary teams in the region, which set the stage for the firm's growth and success across the Southeastern U.S.

From 2006 to 2014, Paul Nowicki served as Gannett Fleming's Northeast Region director and oversaw the operations of its New York, New Jersey, Connecticut, Massachusetts and New Hampshire offices. While in this role, he led the region to record growth and profits through the strategic expansion of its business lines – including transportation, water, architectural and construction services – as well as through strategic hires that enabled the region to meet client service demands.

Paul Nowicki's career with Gannett Fleming began in Detroit as an intern in 1982. He continued with the firm during his academic studies and, upon graduation in 1986, he moved to New Jersey where he began full-time employment with the firm. He has worked on some of the largest transportation projects in Gannett Fleming's history, including the extension of the New Jersey Route 18 corridor in New Brunswick, Middlesex and Monmouth Counties, for which he was responsible for managing more than \$500 million in transportation improvements.

Paul Nowicki holds a Bachelor of science in civil engineering from the University of Detroit. He is a registered professional engineer in New Jersey and Massachusetts.

Gannett Fleming is a global infrastructure and engineering firm that provides progressive solutions for transportation, earth sciences and natural resources, geospatial, water, power, and facilities projects. Founded in 1915, our experience spans 65 countries and thousands of successful projects. Our 2,000 employees deliver excellence in planning, design, technology, and construction management from more than 60 offices around the world.

Source: Gannett Fleming



The **Toro Company** has named **Rick Rodier** vice president of Toro's Sitework Systems Business, after previously serving as general manager.

In his new position, Mr. Rodier will continue to manage the day-to-day operations of the Sitework Systems Business, in addition to taking a more active role in strategic planning for The Toro Company as part of the executive management team.

"Rick continues to be an excellent leader with the Sitework business, and we are excited to recognize him in this expanded opportunity," says Rick Olson, president and CEO of The Toro Company. "Rick's knowledge of the construction and rental markets has been key to Toro's success and beneficial to the industry as a whole. We look forward to working with Rick in his new position to further grow our position in the construction and rental spaces."

Rick Rodier has been with Toro since 1987 and has held a variety of operational, marketing and business management roles. He was named general manager of Toro's Landscape Contractor Business in 2004 and then appointed to head up Toro's new Sitework Systems Business in 2009. During his tenure at Toro, he has been instrumental in a number of key company initiatives that have driven growth for the Sitework Business and the company.

Earlier this year, Mr. Rodier was named the 2017 chairperson for The International Construction and Utility Equipment Exposition (ICUEE), and also serves as a director on the Construction Equipment (CE) Sector Board of AEM. Rick Rodier holds a Bachelor of Business Administration (B.B.A.) in Business and Economics from Hamline University and an MBA from The University of St. Thomas.

Source: The Toro Company



---

**Weir Minerals Canada** is pleased to announce the appointment of as the director of Comminution.

Sam Palombo brings 16 years of experience and industry knowledge. Most recently, he served as director of Product Management for the Weir Minerals Process Systems group in the U.S. Prior to joining Weir Minerals 4 years ago, Mr. Palombo held various senior management positions and served as the Global Mining manager at Haver & Tyler.

Sam Palombo will lead our efforts to offer a complete comminution product portfolio to the Canadian market.

"The combination of our most recent acquisition of the Trio® product line with our existing Enduron®, Linatex® and Durex® brands allows us to offer a comprehensive comminution package. Such comprehensive package offerings strengthen our core market position in Canada and allow Weir Minerals Canada to be the partner of choice for our customers in the region" said Mr. Palombo.

Source: Weir Minerals

 C31416

---

Looking for a supplier's website?  
Visit [www.infrastructures.com](http://www.infrastructures.com)

# 2017 CWRC in Niagara Falls at Scotiabank Convention Centre

The Canadian Waste to Resource Conference (CWRC) is again proud to partner with Waste & Recycling Expo Canada and the Municipal Equipment Expo to deliver its 8<sup>th</sup> annual conference at the Scotiabank Convention Centre in Niagara Falls on October 25 and 26, 2017.

This year's CWRC will bring together academics, brand owners, municipal officials, policymakers, regulators and waste management professionals for 2 days of networking opportunities and educational sessions with the sector's leading speakers and experts.

If you have an interesting presentation or an idea that could be developed into a workshop session, you are invited to submit a proposal to present at the 8<sup>th</sup> Annual CWRC in one of the following areas:

- Waste and recycling collection and transport
- Waste minimization, materials reuse, and recycling
- Servicing Options (Public/Private)
- Hazardous Waste Management (Recycling, Treatment, Disposal)
- Organics Waste Management & Processing & Diversion (Collection, Processing, Composting, and Anaerobic Digestion/Biomethanization)
- Stewardship Programs - Materials Markets – Paper, Plastics, Glass, etc.



- Recycling/Waste Disposal in Property Management
- Extended Producer Responsibility Programs - Impacts on Service Provision, Export Issues
- Policy, Regulations, Economics and Planning
- Life Cycle Analysis
- Landfill Gas Management
- Green Energy (EFW, GHG & Carbon, New Technologies)
- Waste Transfer & Disposal (Transfer Stations, Landfills)
- Construction and Demolition Waste
- Other Waste-Related subjects

The deadline for proposals is April 7, 2017.

Source: Ontario Waste Management Association

## Guard® WEAR PLATE

**INCREASED WORKABILITY FOR SUPERIOR PRODUCTIVITY**

NLMK North America Plate, LLC  
333 Rouser Road, Suite 104  
Moon Township, PA 15108  
Ph. +1-412-203-4162, ext 3002  
Fax. +1-724-308-4124

Guard® is a quenched and tempered hot rolled plate with high resistance to abrasive wear and impacts.

- available from 3.2mm thickness
- excellent cold forming properties and weldability
- superior workability, tight tolerances, surface finish

[www.QUARD.ME](http://www.QUARD.ME)





**ALLU** One Step Ahead

ALLU Group Inc.  
(800) 939-2558  
usa@allu.net  
www.allu.net

TRANSFORM YOUR THINKING...  
VISIT OUR BOOTH G3749 IN GOLD LOT  
CONEXPO-CON/AGG 2017



**DANUSER** **MB** **LASKI**

Over 1000  
Covers  
Merry  
Agri  
Tracked Dumpers  
Tracked wheel loader

**MESSERSI**

**EASTERN farm machinery limited**  
R.R. #2, 10 Nicholas Road, Gresham, B.C. V1M 0V9  
(519) 763-2400 Fax (519) 763-3930 • www.easternfarmmachinery.com

**InfraStructures**  
Canada's Equipment Magazine • La Revue de l'Équipement au Canada

Find us on Facebook

InfraStructures magazine  
Extra content that you may well find interesting  
Content that you will not find elsewhere!

<https://www.facebook.com/InfraStructuresMagazine/>

## Free Subscription

Complete the coupon and send it to us by mail at:

InfraStructures Magazine  
Subscription Department  
4330 Saint-Hubert Street  
Montreal, QC H2J 2W7

by fax at:  
**514-528-9932**  
or by e-mail at  
[subscriptions@infrastructures.com](mailto:subscriptions@infrastructures.com)

.....send the changes to us by mail or by fax or type-in the information in an e-mail.....

Name: \_\_\_\_\_  
Title: \_\_\_\_\_  
Company: \_\_\_\_\_  
Mailing address: \_\_\_\_\_  
City: \_\_\_\_\_  
Province / Postal Code: \_\_\_\_\_  
Phone: \_\_\_\_\_  
Fax: \_\_\_\_\_  
Website: \_\_\_\_\_  
E-mail: \_\_\_\_\_

## Agenda

### IFAT Eurasia

February 16 - 18, 2017  
Istanbul, Turkey

### Info-Excavation 11<sup>th</sup> annual symposium

February 22 - 23, 2017  
Saint-Sauveur, QC Canada

### PDAC 2017 Convention

March 5 - 8, 2017  
Toronto, ON Canada

### CONEXPO-CON/AGG 2017

March 7 - 11, 2017  
Las Vegas, NV USA



### The Work Truck Show

Sessions March 14 - 17 • Exhibits March 15 - 17, 2017  
Indianapolis, IN USA

### ICRI 2017 Spring Convention

March 15 - 17, 2017  
Montreal, QC Canada

### NASCC: The Steel Conference

March 22 - 25, 2017  
San Antonio, TX USA

### WASSERLEBEN • Wasser Berlin International 2017

March 28 - 31, 2017  
Berlin, Germany

### SMOPYC.

April 4 - 7, 2017  
Zaragoza, Spain

### Journée Expo-Bitume

April 6, 2017  
Drummondville, QC Canada

### National Heavy Equipment Show

April 6 - 7, 2017  
Toronto, ON Canada



### ExpoCam, Canada's National Trucking Show

April 20 - 22, 2017  
Montreal, QC Canada

### APEX

May 2 - 4, 2017  
Amsterdam, the Netherlands

### IRT Asia 2017

May 25 - 27, 2017  
Bangkok, Thailand

### Canada North Resources Expo

May 26 - 27, 2017  
Prince George, BC Canada

### INTERMAT ASEAN

June 8 - 10, 2017  
Bangkok, Thailand



### Atlantic Truck Show

June 9 - 10, 2017  
Moncton, NB Canada

### SIMA Snow & Ice Symposium

June 20 - 23, 2017  
Montreal, QC Canada

### Minexpo Africa

August 10 - 12, 2017  
Dar es Salaam, Tanzania

### Waste & Recycling Expo Canada / Municipal Equipment Expo Canada

October 25 - 26, 2017  
Niagara Falls, ON Canada

### InfraTech

January 10 - 12, 2018  
Essen, Germany

### BAUMA CONEXPO AFRICA

March 13 - 16, 2018  
Johannesburg, South Africa

### INTERMAT Paris

April 23 - 28, 2018  
Paris, France

# 2017 OVERVIEW MAP

AN AGG CONEXPO-CON/AGG LOCATION AND TOUR OF THE AGG CONEXPO-CON/AGG BUILDING COMPLEX



IF IT'S NEW,  
IT'S HERE.

- 1. CONEXPO-CON/AGG 2017
- 2. CONEXPO-CON/AGG 2017
- 3. CONEXPO-CON/AGG 2017
- 4. CONEXPO-CON/AGG 2017
- 5. CONEXPO-CON/AGG 2017
- 6. CONEXPO-CON/AGG 2017
- 7. CONEXPO-CON/AGG 2017
- 8. CONEXPO-CON/AGG 2017
- 9. CONEXPO-CON/AGG 2017
- 10. CONEXPO-CON/AGG 2017
- 11. CONEXPO-CON/AGG 2017
- 12. CONEXPO-CON/AGG 2017
- 13. CONEXPO-CON/AGG 2017
- 14. CONEXPO-CON/AGG 2017
- 15. CONEXPO-CON/AGG 2017
- 16. CONEXPO-CON/AGG 2017
- 17. CONEXPO-CON/AGG 2017
- 18. CONEXPO-CON/AGG 2017
- 19. CONEXPO-CON/AGG 2017
- 20. CONEXPO-CON/AGG 2017
- 21. CONEXPO-CON/AGG 2017
- 22. CONEXPO-CON/AGG 2017
- 23. CONEXPO-CON/AGG 2017
- 24. CONEXPO-CON/AGG 2017
- 25. CONEXPO-CON/AGG 2017
- 26. CONEXPO-CON/AGG 2017
- 27. CONEXPO-CON/AGG 2017
- 28. CONEXPO-CON/AGG 2017
- 29. CONEXPO-CON/AGG 2017
- 30. CONEXPO-CON/AGG 2017
- 31. CONEXPO-CON/AGG 2017
- 32. CONEXPO-CON/AGG 2017
- 33. CONEXPO-CON/AGG 2017
- 34. CONEXPO-CON/AGG 2017
- 35. CONEXPO-CON/AGG 2017
- 36. CONEXPO-CON/AGG 2017
- 37. CONEXPO-CON/AGG 2017
- 38. CONEXPO-CON/AGG 2017
- 39. CONEXPO-CON/AGG 2017
- 40. CONEXPO-CON/AGG 2017
- 41. CONEXPO-CON/AGG 2017
- 42. CONEXPO-CON/AGG 2017
- 43. CONEXPO-CON/AGG 2017
- 44. CONEXPO-CON/AGG 2017
- 45. CONEXPO-CON/AGG 2017
- 46. CONEXPO-CON/AGG 2017
- 47. CONEXPO-CON/AGG 2017
- 48. CONEXPO-CON/AGG 2017
- 49. CONEXPO-CON/AGG 2017
- 50. CONEXPO-CON/AGG 2017
- 51. CONEXPO-CON/AGG 2017
- 52. CONEXPO-CON/AGG 2017
- 53. CONEXPO-CON/AGG 2017
- 54. CONEXPO-CON/AGG 2017
- 55. CONEXPO-CON/AGG 2017
- 56. CONEXPO-CON/AGG 2017
- 57. CONEXPO-CON/AGG 2017
- 58. CONEXPO-CON/AGG 2017
- 59. CONEXPO-CON/AGG 2017
- 60. CONEXPO-CON/AGG 2017
- 61. CONEXPO-CON/AGG 2017
- 62. CONEXPO-CON/AGG 2017
- 63. CONEXPO-CON/AGG 2017
- 64. CONEXPO-CON/AGG 2017
- 65. CONEXPO-CON/AGG 2017
- 66. CONEXPO-CON/AGG 2017
- 67. CONEXPO-CON/AGG 2017
- 68. CONEXPO-CON/AGG 2017
- 69. CONEXPO-CON/AGG 2017
- 70. CONEXPO-CON/AGG 2017
- 71. CONEXPO-CON/AGG 2017
- 72. CONEXPO-CON/AGG 2017
- 73. CONEXPO-CON/AGG 2017
- 74. CONEXPO-CON/AGG 2017
- 75. CONEXPO-CON/AGG 2017
- 76. CONEXPO-CON/AGG 2017
- 77. CONEXPO-CON/AGG 2017
- 78. CONEXPO-CON/AGG 2017
- 79. CONEXPO-CON/AGG 2017
- 80. CONEXPO-CON/AGG 2017
- 81. CONEXPO-CON/AGG 2017
- 82. CONEXPO-CON/AGG 2017
- 83. CONEXPO-CON/AGG 2017
- 84. CONEXPO-CON/AGG 2017
- 85. CONEXPO-CON/AGG 2017
- 86. CONEXPO-CON/AGG 2017
- 87. CONEXPO-CON/AGG 2017
- 88. CONEXPO-CON/AGG 2017
- 89. CONEXPO-CON/AGG 2017
- 90. CONEXPO-CON/AGG 2017
- 91. CONEXPO-CON/AGG 2017
- 92. CONEXPO-CON/AGG 2017
- 93. CONEXPO-CON/AGG 2017
- 94. CONEXPO-CON/AGG 2017
- 95. CONEXPO-CON/AGG 2017
- 96. CONEXPO-CON/AGG 2017
- 97. CONEXPO-CON/AGG 2017
- 98. CONEXPO-CON/AGG 2017
- 99. CONEXPO-CON/AGG 2017
- 100. CONEXPO-CON/AGG 2017

www.conexpoconagg.com



EXCLUSIVE DEALER

**LARUE**

**LB/P**  
LeeBoy Group

DON'T  
MISS THIS  
CHANCE!



RW-100

## NEW DEALER

QUEBEC AND MARITIMES

Financing plan starting at **0%**



PF-161C



RW-35



CB-90



G-700



PF-150



PTC-15

Montreal/Laval  
GAETAN LANGLOIS  
2397 Michelin Street  
Laval (QC)  
Canada H7L 5B9  
Phone: 450 781-3693  
Cell: 514 953-3033  
Fax: 450 781-3692

Quebec  
ERIC ROY  
660 Lenoir Street  
Quebec (QC)  
Canada G1X 3W3  
Phone: 418 658-3003  
Cell: 418 564-4557  
Fax: 418 658-6799

Moncton  
JASON LANTEIGNE  
485 Venture Drive  
Moncton (NB)  
Canada E1H 2P4  
Phone: 506 855-3003  
Cell: 506 876-1619  
Fax: 506 855-8610



**IMAGINE WHAT'S NEXT.**

March 7-11, 2017 • Las Vegas Convention Center • Las Vegas, USA