


InfraStructures

CONSTRUCTION • PUBLIC WORKS • NATURAL RESOURCES

Volume 22 • Number 5 • May 2017 • *English Edition*



THIS  DIDN'T
JUST SECURE A
LOOSE FOOTING,
IT STABILIZED AN
ENTIRE FACTORY.

Forward-thinking solutions
that can make a big impact
on your business.

**ACKLANDS
GRAINGER®**

INDUSTRIAL
SIZED
SOLUTIONS

Visit acklandsgrainger.com

**Volume 22 Number 5
May 2017**

PUBLISHER

Jean-François Villard
editor@infrastructures.com

CONTRIBUTING EDITORS

Rob Holden
Robert Marenger
toronto@infrastructures.com

ADVERTISING SALES

sales@infrastructures.com

TELEPHONE

514-233-1295
613-862-1295
416-795-1295

FAX: 514-528-9932

ADDRESS CHANGES

Send us your address changes by E-Mail to:
subscriptions@infrastructures.com

MAILING ADDRESS

4330 Saint-Hubert Street
Montreal (Quebec) H2J 2W7

INTERNET

www.infrastructures.com



/InfraStructuresMagazine



InfraStructures is circulated free of charge to qualified users of heavy machinery and specialized equipment in construction, public works, and natural resources across Canada in both French and English.

The cost of a subscription for either edition for one year is \$50 for Canadian residents and US\$75 or €75 for U.S. and overseas.

The content of InfraStructures is available for consultation on the website www.infrastructures.com. It may not be reproduced or transmitted in any form, either in part or in full, without the written consent of the copyright owner.

LEGAL DEPOSIT

Bibliothèque Nationale du Québec

DISTRIBUTED BY CANADA POST

Publications Mail Agreement #40052183

A Brief Word...

Time to change the old rhyme to say; "May showers bring no end to rubbish weather. "Fingers crossed we might get some summer before September!

This is one of those years when the "Trade Show Cycle" can be very wearing to all concerned. Every so many years the stars align in such a way that everything seems to come at once. It has led to some pointed discussion by exhibitors and attendees so far, the common thread being the question: "What makes a show worth participating in?"

Canada is a small market in the greater scheme of things, so we tend to bare the brunt of austerity in marketing budgets more than most. This year it seems like we have turned a corner and vendors/visitors will want more value-for-money going ahead.

I write this whilst attending the CIM Expo in Montreal, and would suggest it to be an example of the "Value Added" principal. The organizers have laid-on a full exhibition hall supported by presentations and seminars and a balanced hospitality calendar. Few in attendance have not endorsed this style of event as a justifiable expenditure that reaches customers and generates positive results.

In an age when ledger ink is the driving force within a company, the ability to justify cost is more critical than it has ever been.

InfraStructures understands that concept better than any other media outlet. As Canada's ONLY bilingual equipment publication, we reach every vendor, user, operator, buyer, fleet manager, etc., unlike the others, regardless of language or geographic locale.

Please read, enjoy and share this latest content-packed issue and hopefully before next issue the sun will have come out, ...and stayed!

OptiFant 8000 / CityFant 60



SALES & RENTALS
Vacuum type street sweepers
Different models from 1 m³ to 10 m³
USED SWEEPERS IN STOCK



Accessories Machinery Limited
www.aml.com

1-800-461-1070

On the cover: German contractor Hälbich Dienstleistungs GmbH uses a SENNEBOGEN 718 E-series with Westtech Woodcracker cutter head to clear embankments along autobahn A8.

KAL TIRE 'INVESTING IN AUSTRALIA'

Nearly a year after acquiring one of Australia's leading mining tire service firms, Kal Tire's Mining Tire Group will be showcasing how the company is continuing to expand its reach and services for customers from coast to coast at the upcoming Asia-Pacific's International Mining Exhibition (AIMEX), that will be held August 29-31, 2017 in Sydney, Australia.

"Kal Tire is committed to having a strong

presence in the world's major mining markets, and Australia is an important mining region that we're investing in," says Dan Allan, senior vice president, Kal Tire's Mining Tire Group. "We see AIMEX as an opportunity to demonstrate our commitment to Australian mining customers and showcase some of our unique capabilities that drive value."

Kal Tire's Mining Tire Group has been operating in Western Australia for almost

7 years, offering a complete range of tyre service and supply solutions. In 2016, the organisation acquired the mining tire services business from Australian leader, Klinge & Co., securing Kal Tire's presence across Australia.

A global leader in full service mining tire management, Kal Tire is also an independent multi-brand dealer able to source the right tire for the right application. The company specializes in value-added offerings, such as tire repairs and recycling. In the last 2 years, Kal Tire has brought more and more of their unique solutions to Australia, including 2 facilities for the exclusive Ultra Repair™ product and process for repairing earthmover tires with large injuries.

"At AIMEX, we look forward to showcasing the breadth of our ability to serve Australia. We are a global company with 45 years' experience offering services in more than 20 countries," says Darren Flint, managing director, Kal Tire Australia. "That level of expertise and presence means we have resources available when needed, we also have global standards for operating and we bring industry best practice to safety and risk management in all aspects of our services."

In addition to showcasing its full tire management and supply capabilities, Kal Tire will be highlighting its focus on innovation at AIMEX 2017.

"When it comes to innovation, our focus is on developing tools that improve productivity, value and safety in mining operations," says Mr. Flint. "In Australia, we have recently introduced our patented ram mount tools, along with our new service carts and tire deflator tool."

As part of its commitment to helping customers extend the life of their tires and their mining tire investment, Kal Tire looks forward to giving AIMEX attendees a presentation on haul road design best practices, and how implications of the design impact tire wear, site safety and productivity.

Source: KAL Tire

HUSQVARNA GROUP TO ACQUIRE HTC

Husqvarna Group's Construction Division has signed an agreement to acquire the Floor Grinding Solutions Division of HTC Group AB, the market leader in floor grinding solutions, strengthening its position in surface preparation.

"We have previously communicated the



**MANUFACTURER
SNOW REMOVAL
EQUIPMENT
& ATTACHMENTS FOR
HEAVY MACHINERY**

INTERNET :
www.edfhtd.com

E-MAIL :
info@edfhtd.com

**BUCKETS
FOR LOADERS
& EXCAVATORS**

**QUICK-ATTACH
FOR LOADERS
& EXCAVATORS**

**MATERIAL HANDLING
FORKS
FOR LOADERS**

EDF
EQUIPMENT FOR HEAVY MACHINERY

1-888-649-3331
(514) 866-6859
(450) 649-9461
Fax: (450) 649-1874

1735 Lavoisier St., Sainte-Julie, Qc J3E 1Y6
CALL US
TOLL FREE! **1-888-649-EDF-1**

ambition to grow our Construction Division. The acquisition of HTC is an important step on that journey and, together with the recent acquisitions of Pullman Ermator and Diamond Tool Supply, is seen as an expression of that goal. Combined, these acquisitions give us a strong position in the fast growing and attractive surface preparation market," says Kai Wörn, president and CEO of Husqvarna Group.

"The combination of HTC and Husqvarna Construction will create a strong platform to educate floor owners and architects about the benefits of polished concrete floors and increase the preference of this flooring solution. Through the acquisition, we will strengthen our ability to develop and offer customers the best total solutions for the segment," says Henric Andersson, president of Husqvarna Construction.

"The HTC team brings extensive floor grinding product and application expertise which combined with Husqvarna's global reach and scale gives us a stronger position to grow the polished flooring market, and help our customers to achieve beautiful and easily maintained floors at lower environmental impact. Together we will also explore synergies in areas including sourcing and technology," adds Mr. Andersson.

The acquisition of HTC Floor Grinding Solutions is subject to approval from competition authorities and the impact on Husqvarna Group's earnings in 2017 will be limited.

Source: Husqvarna AB

CON CAST PIPE ACQUIRES HY-GRADE PRECAST CONCRETE

Con Cast Pipe, a leading manufacturer of precast concrete drainage products including concrete pipe, manholes, catchbasins, and box units, as well as a wide range of bridge and specialty precast products in Canada, has announced the recent purchase of Hy-Grade Precast Concrete in St. Catharines, Ontario.

Due to their outstanding reputation in the Niagara community, Hy-Grade Precast Concrete will continue to operate under the Hy-Grade name and become the 3rd Ontario manufacturing facility for Con Cast Pipe.

Hy-Grade Precast Concrete is recognized for exceptional quality and adds comprehensive product solutions for Con Cast Pipe customers, including modular buildings, utility vaults, highway and

security barriers, as well as retaining, security and privacy walls. The acquisition of Hy-Grade's portfolio of products adds variety to Con Cast Pipe's already extensive product offerings.

"Con Cast Pipe's purchase of Hy-Grade Precast Concrete will create exciting new growth opportunities that will benefit our employees and the communities in which we operate – Puslinch, Oakville and St. Catharines," says Brian Wood, president of Con Cast Pipe.

"The company brings a rich history of product knowledge and performance, and shares the same dedication and integrity that Con Cast Pipe is known for. The coming together of these 2 strong brands in the precast industry is a recipe for success."

With the purchase complete, both companies will now work to ensure successful integration, capitalizing on the skills and resources within both organizations to provide the premier choice of precast concrete products in the marketplace.

Source: Con Cast Pipe

CM LABS SIMULATIONS JOINS JOHN DEERE SUPPLY BASE

CM Labs Simulations has been chosen to supply simulation-based construction equipment training software to John Deere Construction & Forestry Company.

"We're excited to be working with John Deere in the development of their next-generation of market-leading training simulators," said Arnold Free, CM Labs Simulations' chief commercial officer. "Together with John Deere, we look forward to helping John Deere clients develop productive operators for their equipment."

CM Labs' physics-based simulation solutions will provide an engaging learning environment for customers of John Deere Construction equipment.

CM Labs Simulations is the leading supplier of simulation-based training solutions for the construction industry. Its Vortex Studio simulation software is used by many top-tier OEMs to deliver off-highway equipment simulation operator training and virtual prototyping applications for R&D purposes.

SEE US AT
WASTE EXPO
Booth #3359

GEAR UP with BEKA for the long haul!

Long after your old-style spring-driven auto-lube system starts showing its age, BEKA systems keep pumping at peak efficiency.

- No springs! Eccentric gear drive resists wear, fatigue and cold
- Consistent results in all weather, all climates
- Resists deterioration from harsh environments and road treatments

Find out why industries are choosing today's best-built auto-lube systems.

Call 1.888.862.7461 or email us at info@beka-lube.com.



Beka-Lube
PRODUCTS INC.
LUBRICATION. PROTECTION. SERVICES.

1.888.862.7461
www.beka-lube.com

BEKA - LUBRICATION SPECIALISTS SINCE 1927



With Vortex Studio, clients can experience their product vision before it's a reality, and with Vortex Construction Equipment Simulators, more effectively train crews for skilled operations before stepping foot on the worksite. With over 1,000 simulators in 30 countries using Vortex software, it has become the recognised standard for the industry.

Through Vortex Studio, CM Labs provides capabilities for training simulators, mission rehearsal, serious games, virtual prototyping, and testing. For 2 years in a row, CM Labs was named to the prestigious Deloitte Technology Fast 500™ and among the fastest growing technology companies in North America. The company's markets are global – working with established leaders as well as emerging market trailblazers.

Source: CM Labs Simulations Inc.

BRANDT PURCHASE OF SASKATOON MANUFACTURING FACILITY FINALIZED

The Brandt Group of Companies has successfully concluded its purchase from Prestige Equipment and Hilco Global of the former Mitsubishi Hitachi Power Systems Canada Ltd. (MHPSC) facility in Saskatoon. The entire 8.9 ha parcel, along with its 19,300 m² manufacturing facility and all of its highly specialized equipment has made the transition to local ownership for an undisclosed sum. The plant features the largest machining and fabrication equipment in Canada and has produced power generation equipment for customers around the world, including SaskPower.

"We are very excited to have successfully completed this major expansion so quickly," says Shaun Semple, Brandt president. "It is an important milestone for the company, as doubling our manufacturing footprint will open up significant opportunities to grow our current product offering and create high-value skilled trades jobs in the province."

The acquisition of this facility has increased Brandt's total manufacturing footprint to over 46,450 m², split evenly between Regina and Saskatoon. Brandt is currently in planning to determine an optimal return-to-operations schedule for the facility, but has already begun hiring local workers to aid in bringing the facility up to the company's exacting LEAN standards as quickly as possible.

"We're anticipating sitting down with

SaskPower and all 3 levels of government to lay the foundation for a renewed, Saskatchewan-owned green energy industry," adds Mr. Semple. "We are very hopeful that SaskPower and the provincial government will be supportive and stipulate that any towers brought online in the province must be built here as well, guaranteeing a bright future for many skilled Saskatchewan workers."

The Brandt Group of Companies, headquartered in Regina, Saskatchewan, is comprised of Brandt Agricultural Products Ltd., Brandt Engineered Products Ltd., Brandt Equipment Solutions Ltd., Brandt Road Rail Corporation, Brandt Developments, and Brandt Tractor Ltd. – the world's largest privately held John Deere construction and forestry equipment dealer.

Source: Brandt Tractor Ltd.

KOBELCO USA NAMES TRACTORLAND AS DEALER IN ALBERTA

KOBELCO Construction Machinery USA continues to expand representation in the North American market by adding Tractorland to its growing dealer network. Tractorland will represent the full line of KOBELCO excavators in Balzac, Alberta.

"KOBELCO is a quality excavator manufacturer with a strong customer base and an excellent reputation for building robust, reliable machines with advanced technology and superior performance," states Archie Hall, president of Tractorland. "Not only are KOBELCO's excavators top-notch, their after-purchase service support is second to none. We're thrilled to add the KOBELCO brand to our equipment offerings."

KOBELCO has long been recognized for its world-class line of excavators. In order to continuously improve its

TrailerCam™ - Revolutionary New Product Solution for Blind Spots

Last month, FLO Components Ltd. displayed a "revolutionary new product solution for blind spots" said Mike Deckert, vice-president of FLO Components, at the National Heavy Equipment Show – the Portable TrailerCam™. Designed and engineered in the USA by Convoy Technologies, LLC, the patent pending portable TrailerCam™ is a removable, wireless, rechargeable battery-operated camera that literally can be placed (using strong, rugged magnets) on the side or rear of any truck, trailer or equipment.

According to Mr. Deckert, the camera can be placed up to 30 m in distance, and can communicate high quality video images and audio to the display monitor in the cab with zero latency or interference. The TrailerCam™ is waterproof, dustproof and "extremely rugged – capable of withstanding the highest industry standards for shock and vibrations.

For companies with multiple trailer fleets or equipment, the TrailerCam™ allows for usage with different trailers, swapping trailers and pairing with other TrailerCam™ devices.

"For 40 years our focus at FLO has been to provide solutions which help companies cut costs, reduce unscheduled downtime and improve productivity, to take away our customers' pain. To that end, the TrailerCam™ is a perfect fit with our current lines of automatic greasers, onboard oil change systems and garage bulk fluid handling & inventory control systems. The TrailerCam™ eliminates the high cost cable installation and labor required by traditional cameras. Most important, the TrailerCam™ will dramatically and conveniently eliminate blind spots and the pain they can cause."

Source: FLO Components



THE DYNAMIC DUO

HERCULES HYDRAULIC HAMMER AND SONIC SIDEGRIP®

The Hercules Hydraulic Hammer (H3) and the Sonic SideGrip® (SSG) make a dynamic duo! Individually, each can get the job done and provide efficiency to your job time. But, when teamed up, both can provide benefits far exceeding other equipment. Both units are excavator mounting and only take minutes to switch from one to the other. Use the H3 and SSG to set and drive your piles for maximum speed and precision.

H³

HMC-US.COM

**SONIC
SIDEGRIP®**



Hercules Machinery Corporation
Manufacturer and Supplier of Foundation Equipment

☎ 800.348.1890

🌐 HMC-US.COM

singular product line, the team of KOBELCO engineers and field experts dedicate substantial time and effort into the research and development of today's leading technologies and machinery. KOBELCO ensures the delivery of excavators that can withstand the day-to-day rigors of demanding jobsites, while providing operators with all the production and comfort features required for a profitable days work.

The staff of Tractorland will be working closely with KOBELCO to gain the required sales and product support training to deliver on the KOBELCO promise of customer satisfaction. Tractorland will provide professional sales, rentals, parts and service support on all KOBELCO excavators from their location in Balzac, just east of Cross Iron Mills.

Tractorland is a 10-year old, family-owned and operated heavy equipment dealership, who prides itself on providing the highest quality service possible. Tractorland's staff of well-trained experts is dedicated to supplying their valued customers with reliable equipment to suit their application needs.

Source: KOBELCO Construction Machinery USA

JOY GLOBAL INC. WILL BE RENAMED KOMATSU MINING CORP.

Komatsu America Corp., a subsidiary of Komatsu Ltd. has completed its acquisition of Joy Global Inc., a worldwide leader in high-productivity mining solutions.

Retaining its headquarters in Milwaukee, Wisconsin, Joy Global Inc. will be renamed Komatsu Mining Corp. and operate as a subsidiary of Komatsu. The company will continue to promote and invest in the P&H, Joy and Montabert product brands. Komatsu remains committed to directly servicing the global mining industry and through its products, services and technologies is focused on helping customers improve productivity and safety in their operations worldwide.

"The combination of our Komatsu-brand surface mining equipment with the P&H, Joy and Montabert brands of surface and underground products will allow us to offer a complete range of mining solutions for our customers," said Tetsuji Ohashi, president and CEO of Komatsu. "We plan to build on the strength of our shared cultures, including our unwavering belief

in safety first and our passion for providing innovative solutions, to become an unrivaled mining solutions and services provider."

The close of the transaction adds to the Komatsu team more than 10,000 people with deep knowledge and experience in the mining industry, bringing the company's global total to more than 57,000 employees. With a focus on providing uninterrupted and unrivaled service and products for its customers, Komatsu plans to leverage the best practices of both companies while aligning the organization and operation for optimal customer support. Komatsu Mining Corp. will be led by Jeffrey Dawes, formerly leader of Komatsu Latin America. Mr. Dawes and the management team will be based in Milwaukee. Following the close of the transaction – valued at approximately \$3.7 billion, including Joy Global's outstanding indebtedness – Joy Global shares will be delisted from the NYSE and will no longer be publicly traded.

Source: Komatsu Ltd.

3rd EDITION OF THE ITA TUNNELLING AWARDS!

As the saying goes, "all good things come in threes" and that is particularly apt knowing the upcoming edition of the ITA Awards will be the 3rd to be launched

since the ITA decided to create the event in 2015 and, for this edition, to create 3 new categories! In 2017, the event will take place in Paris, on November 15, during the AFTES (French Association of Tunnelling and Underground Space) congress.

After 2 successful editions in Switzerland and Singapore, the ITA Tunnelling Awards is becoming an international standard for the tunnelling world. The first editions of the ITA Tunnelling Awards received more than 200 entries and 64 nominations, rewarded 21 projects and personalities and gathered more than 450 attendees.

The application process for the 2017 edition is now open and candidacies can be registered until May 30th, in the ITA Tunnelling Awards website. This year, entries can be submitted in 9 categories.

The International Tunnelling and Underground Space Association (ITA) is a non-profit and non-governmental international organization, which aims at promoting the use of underground space as a solution to sustainable development. Founded in 1974 and operating out of Lausanne, Switzerland, ITA currently has 73 Member Nations, 300 affiliated members, 17 Prime Sponsors and 60 supporters.

Source: The International Tunnelling and Underground Space Association (ITA)

Ready to Pulverize Rock or Concrete?

Husqvarna introduces the DC 200 drum cutter, a new attachment for the DXR demolition robot product line.

The DC 200 is a versatile attachment made for surface profiling rock or concrete, trenching, excavating frozen soil, soft rock excavation in quarries, demolition and dredging. The 56 tungsten carbide-tipped picks on each side of the machine rotate and chip away at the surface material to the desired depth or complete removal. If the material is not completely removed, a smoother, more uniform surface results as well as finer grain sizes so material can be removed more easily or used as back fill without additional crushing. The DC 200 is suitable for use on restricted jobsites and sensitive urban areas due to the low noise and low vibration levels.

Source: Husqvarna Construction Products Americas



SONIC SIDEGRIP®

WITH ARTICULATING
SIDE-GRIPPING JAWS

Designed, Tested, and Proven for
over 17 years.



Hercules Machinery Corporation

Manufacturer and Supplier
of Foundation Equipment.

The Sonic SideGrip® provides an edge in the competitive bidding process and overall job completion. With side-gripping jaws and an auto steering system, the Sonic SideGrip® provides unbeatable maneuverability, shorter job completion time and reduced job costs. For more information about pile driving equipment and foundation equipment from Hercules, contact us at 800-348-1890.

CALL: 800.348.1890 | ONLINE: HMC-US.COM

Dana's Intelligent Load Monitoring System Available for Pre-Production Testing on Telehandlers

Dana Incorporated recently announced that its Spicer® Smart Suite™ Intelligent Load Monitoring System (ILMS) is now available for preproduction testing by vehicle manufacturers. Showcased at CONEXPO/CON-AGG, last March, this system for telehandlers uses patented and proprietary data-collecting technologies across the vehicle to prevent tip-over incidents, estimate static loads, and supply intelligent calibration management.

Spicer Smart Suite ILMS is designed to alert the operator of potential tipping situations, reduce the risk of vehicle breakdowns, improve productivity and precision, and enhance the long-term durability of powertrain systems. Production of the Spicer Smart Suite ILMS is anticipated for 2018.

Traditional load monitoring technology collects limited measurements from a single remote-mounted or retrofitted load cell on the rear axle. Spicer Smart Suite



ILMS transforms the axle frame into an active system that uses highly integrated electronics and intelligent algorithms to improve performance and enhance safety.

The system is part of a series of Spicer Smart Suite technology packages under

development by Dana. This platform of fully integrated, connected-vehicle features converts operating data from the drivetrain into actionable insights for enhancing productivity, improving operator and machine safety, reducing maintenance costs, and

Hyundai Adds Mobile App for Hi-Mate Remote Management System

At CONEXPO-CON/AGG 2017, held last March in Las Vegas, Hyundai Construction Equipment Americas, Inc. (HCEA), announced a mobile application of its exclusive Hi-Mate remote management system that uses GPS technology to track Hyundai construction machines at any time and in any location. Hi-Mate monitors key machine components such as the engine, hydraulics and electrical system.

This application is available free to current Hi-Mate subscribers. Users with smartphones and other mobile devices using the Android operating system may download the new Hi-Mate mobile app from the Google Play store. An iOS version for iPhones is in development.

"The mobile app is a great addition to our Hi-Mate product offering," said Scott Rainwater, manager of Tech Support, Hyundai Construction Equipment Americas. "Like the full Hi-Mate application, the mobile version saves our customers time and money by promoting greater preventive maintenance to reduce equipment

downtime."

The mobile Hi-Mate app lets users view and manage information much as they would using Hi-Mate on a desktop, laptop or tablet computer.

Among other capabilities, users may view operating information, select and activate alarms, and call up reports such as alarm incidents and maintenance status. For users who track multiple machines via Hi-Mate, the new Android app facilitates monitoring any specific machine or combination of machines.

Hi-Mate provides complete, real-time information on the location and operation of Hyundai wheel loaders and excavators. It also supports theft prevention through



such capabilities as geo-fencing and alarm notifications.

Hyundai provides free use of Hi-Mate for 3 years with the purchase or lease of any new Hyundai HL900 series wheel loaders, HX series crawler excavators or HW series wheeled excavators.

Source: Hyundai Construction Equipment Americas

decreasing total operating costs.

Spicer Smart Suite technology is fully integrated into component housings, delivering optimum packaging and ensuring that sensitive mechatronic subsystems are fully protected from accidental damage and the impacts of typical operating environments. Dana's solution supplies greater long-term value over the remote-mounted and retrofitted solutions currently available from third-party providers.

"Interest in advanced operating intelligence is growing rapidly among equipment manufacturers in the off-highway market. Vehicle owners and operators are looking for robust metrics and analytics to improve safety and performance," said Aziz Aghili, president of Dana Off-Highway Drive and Motion Technologies. "The Spicer Smart Suite platform leverages Dana's decades of expertise, seamlessly integrating vehicle intelligence technologies with our line of drivetrain components to provide real-time insights."

In its most basic implementation, Spicer Smart Suite ILMS provides alerts of improper operating maneuvers to enable

EN15000 compliance. Dana is currently testing a range of additional premium functions, including:

- stability overview display, which shows the center of gravity of the telehandler and provides vital safety information while performing complicated maneuvers or positioning the vehicle on uneven terrain;
- axle attitude estimation, which prevents tip-over incidents by showing the pitch

and roll angles of the axles;

- vehicle usage records, which document load cell sensor data, vibration and shock absorption, and other historical information.

This data collection can benefit the rental market in terms of liability, maintenance, and cost considerations; and estimation of lifted loads.

Source: Dana Incorporated



InfraStructures

InfraStructures is the only, bilingual magazine reaching buyers and specifiers in the construction, public works, and natural resources industries throughout Canada.

For more information or to inquire about how we can assist you in informing our readership about your products and services, contact us at sales@infrastructures.com

NEW LOCATION FOR SMS EQUIPMENT IN LAVAL



As of June 12, 2017

SMS Equipment will move into a convenient new location along Highway 13 North in Laval.

Easy access to the most recent technology and tooling: clear benefits for our customers.

1800, rue Montgolfier
Laval, QC H7T 0L9



Boul. Cléroux
rue John-Molson
Équipement SMS
1800, rue Montgolfier
Laval, QC H7T 0L9
Boul. St-Martin O



1-800-881-9828 – smsequip.com

Sherwin-Williams Canada Announces Addition of Krylon Industrial Coatings to its Consumer Brands Portfolio

Consumer Brands Division of Sherwin-Williams Canada now extends its arm to Krylon Industrial high performance coatings, specially formulated for industrial, institutional and commercial use.

"The Krylon Industrial line lends considerable added value to our portfolio of brands, while reinforcing our competitive position in the Canadian marketplace," states Ahin Bose, director of marketing, Consumer Brands Division of Sherwin-Williams Canada. "Targeted to professionals, it is an appreciable addition to our current range of products. This line of high performance light industrial coatings provides an enhancement to our traditional architectural products and is certain to be well received by Canadian paint dealers. It provides them with the potential to grow their businesses and expand their customer base."

The Krylon Industrial line, intended for light to moderate industrial use, is aimed

mainly at professionals. The line includes alkyd and acrylic enamels, as well as a variety of easy-to-use, easy-to-apply products such as epoxy and urethane coatings, industrial primers, solvents and thinners. Formulated for the most challenging of environments, multiple brand references will satisfy the needs of industry, commercial and residential builders, businesses, public and private institutions, as well as sports organizations.

For a year now, the Consumer Brands Division of Sherwin-Williams Canada has been working to incorporate the Krylon Industrial range into the company's broader product offering. Work has entailed the



development of a marketing program specifically tailored to the Canadian market, technical support services, point-of-sale materials, a product catalogue brimming with a wealth of useful information, as well as a color chart showcasing the breadth of shades on offer.

Krylon Industrial products are already available at a number of points of sale in Canada, mainly hardware stores, paint stores and building supply centers.

Sherwin-Williams Canada is in the process of expanding product presence nationwide with the emphasis on paint retailers interested in broadening their product offering and attracting new customers.

Source: Sherwin-Williams Canada

**NEVER ATTACH
BANNERS
TO SCISSOR LIFTS**

BANNERS CAN ACT LIKE A SAIL IN STRONG WINDS

IPAE
THE WORLD AUTHORITY IN POWERED ACCESS

WWW.IPAE.ORG/ANDYACCESS
Ref. 1.00 12/09/14

*Manufacturer of
Demolition tools and
Drilling accessories,
here in Canada,
since 1985*

**TRAMAC
ALLIED
STANLEY
N.P.K.
RAMMER
FURUKAWA
TELEDYNE
OKADA
MELROE-BOBCAT**

GEOROCFOR
ACCESSORIES INC.

(819) 569-4207

www.georocfor.com
roger@georocfor.ca

105 Joseph-Robertson, Sherbrooke, QC J1L 2W7

CEMCO Introduces Portable Industrial Tile Recycling Plant

CEMCO, Inc. recently introduced a Portable Industrial Tile Recycling Plant as a zero-waste solution for crushing stockpiles of unused tile into a fine product that is suitable for use as a raw material. The entire system, which is mounted on a custom trailer for convenient hauling, can be fully operational within an hour of arriving at a jobsite. CEMCO works closely with companies to customize plant designs to suit a variety of material recycling applications.

CEMCO designed the Portable Industrial Tile Recycling Plant around its Turbo™ 54 VSI Crusher, an efficient, highly productive vertical shaft impact crusher capable of processing a variety of aggregates and industrial minerals. It handles material as large as 25 mm and uses centrifugal force with stationary anvils to crush it along natural stress lines into a uniform, cubical, high-quality product. The crusher features a single-drive motor with input capabilities up to 250 hp.

The closed circuit plant also includes a primary crusher, dust collection system, triple-deck incline vibratory screen and vibratory feeder. A 500 kW generator powers the equipment for ultimate location flexibility.

"This plant is absolutely one-of-a-kind.



A customer approached us looking for a portable option for tile recycling. By adapting the plant's components to fit on the relatively compact surface of a single trailer, we eliminated the need to transport the equipment separately and reconfigure the plant at each site," said Jennifer Hise, CEMCO vice president. "This saves time and money, and it's a concept we adjust and adapt to suit other companies needing

portable solutions for industrial recycling."



The plant is mounted on a custom 19.8 m, 44.5 t quad-axle trailer with self-leveling hydraulic jacks for easy setup. CEMCO designed and built the trailer to meet Department of Transportation specifications. The plant is 3.66 m wide with a transport height of only 4.55 m.

Designed for a single product output, the plant efficiently crushes tiles to as fine as 20 mesh. This allows operations to reintroduce the material to the product stream, which makes money, rather than bringing the material to the landfill at an average cost of US\$24/ton (\$35/t).

The plant runs with a 45- to 68 t/h feed rate and a 27 t/h output at 6 mesh. The plant can crush as fine as 20 mesh, but at a somewhat slower output rate. Changing screen sizes expands the plant's capabilities to crush other industrial materials or aggregates.

The Portable Industrial Tile Recycling Plant is manufactured at CEMCO's Belen, New Mexico, facility and is built to meet all OSHA and MSHA safety standards.

Source: CEMCO, Inc.

With more readers across Canada than any other trade magazine **InfraStructures** offers you the **widest coverage** available to advertise your products and services.

Why advertise anywhere else?



With readers involved in all aspects of the industry **InfraStructures** offers you the **deepest coverage** available to advertise your products and services.

Choose **InfraStructures** for your next campaign.

A Tight Site at Station Square

In Burnaby, British Columbia, just outside of Vancouver, Station Square has been designed for the future. The development – to be completed in 3 phases – includes 5 planned multi-use condominium towers (and a pedestrian streetscape) that connect residents to amenities, retail, public

retail and services.

The inaugural tower sold out in 2 days. In 2015, residents moved into that first tower while construction began on the next 2 towers (Phase 2). Scheduled to be completed during spring 2017, the project is currently ahead of schedule, thanks to

tion Ltd. was not permitted to assemble formwork onsite. To accommodate the location's space limitations, the Top 50 large-area formwork system was preassembled at the contractor's yard and shipped to the project site. Using preassembled formwork also sped construction by enabling im-



mediate use of equipment and materials once they arrived.

Framax Xlife can be prebuilt offsite and then flown in place with just one crane pick to provide both space and time savings at the site. The contractor owns Frami formwork and has several years of experience using

plazas and transportation to encourage a cohesive, walkable community. When all 5 towers are completed, Station Square will house 2,000 residences, 13,900 m² of office space and 30,650 m² of restaurants,

Doka's preassembled formwork systems that help streamline vertical concrete construction processes.

The biggest challenge has been that, due to site logistics, Two Pillars Construc-

tion Ltd. was not permitted to assemble formwork onsite. To accommodate the location's space limitations, the Top 50 large-area formwork system was preassembled at the contractor's yard and shipped to the project site. Using preassembled formwork also sped construction by enabling im-

Neal Manufacturing Launches Sealcoating Baffle Attachment for Drastically Improved Efficiency

Neal Manufacturing, a division of Blastcrete Equipment Company and leader in asphalt pavement maintenance equipment, launches the industry's first sealcoating baffle attachment – AutoTrim. The unit attaches to the front of Neal's DA 350 Dual Applicator machine and can be retrofitted onto any truck-powered sealcoating unit to automatically cut-in sealcoat materials on the go while keeping curbs and edges free of material. When paired with Neal's high-powered blower, contractors can perform sealcoat prep work as much as 7 times faster than with traditional methods.

"Cutting in is a manual and time-consuming necessity for contractors," said Jim Farrell, Blastcrete CEO. "We designed the hydraulic AutoTrim to address that issue and improve the sealcoating process so our customers can be more profitable."

The hydraulic AutoTrim features a spray nozzle, hose and baffle that bolts on to the front of the machine and connects directly to the applicator's sealcoat reservoir for a seamless operation. The system minimizes

manpower and eliminates the hassle of manually holding a baffle and spraying material. Combined with Neal's 170 m³ blower, contractors get a prep work powerhouse. Operators can clear debris with the blower and cut in with sealcoating materials as fast as 4.25 m/s, 7 times faster than what can be achieved manually, all without leaving the DA 350's driver's seat.

The DA 350's hydraulic blower offers triple the output of a typical walk-behind blower, for fast and thorough dirt and debris clearing. Contractors can rotate the blower and lock it in an upright position for transportation, or move it down for operation. The nozzle on the blower articulates 360°, allowing contractors to blow debris in the optimum direction.

Neal's DA 350 Dual Applicator is a 3-wheeled, self-propelled sealcoating machine that features a 1325 l tank and allows contractors to apply sealcoat with squeegee and spray systems.

Its heavy-duty diamond-shaped squeegee assembly has internal baffles that

help distribute material more evenly than squeegee assemblies without baffles. After applying a coat with the squeegee, contractors can apply a second coat with the DA 350's spray bar, which can expand up to 3.66 m wide. A spray coat also can be applied with a 1.8 m hand wand connected to 22.8 m of reinforced hose for added versatility on the jobsite.

Neal's dual application system gives contractors the ability to fill the voids in the surface of the asphalt with the squeegee. They can then apply a second coat with the spray bar for a smooth finish that completely seals the asphalt and lasts as much as 40% longer than a job done with 2 spray coats.

To improve ease of use and operator efficiency, Neal's DA 350 control panel allows users to access all electrical controls from one centralized location. LED working lights to the front and back of the machine so contractors can easily work in the dark.

The DA 350's heavy-duty aggregate pump is a hydraulic-powered piston



Additionally, the Eurex family of adjustable steel formwork props is being used, which features a high load capacity to provide sturdy support on the site.

"After using Doka on several successful projects, it was an easy decision to choose Doka again for Station Square," said Kurtis Masse, superintendent at Two Pillars Construction Ltd. "The versatility of Doka systems allows the most flexibility to meet

a variety of applications and situations. The systems are easy to learn and fast to cycle. This increases our productivity."

"We appreciate the high level of expertise provided to us by Doka," added Calvin Knorn, vice president/owner of Two Pillars Construction Ltd. "From the planning stages to project execution, Doka is an important partner for our company."

Source: DOKA

Advertise in the **FIRST** and **ONLY** trade magazine reaching users of heavy machinery and specialized equipment all across Canada!



The **2017 Media Kit** is available for download on **www.infrastructures.com**

pump (HDP) that comes standard on all Neal machines. It can transfer as much as 378 l/min of material, which is the fastest transfer rate on the market and as much as 50% faster than diaphragm pumps.

The HDP produces enough pressure to pump modified sealers, emulsions and mastics for asphalt roads, as well as mixes with as much as 1.2 kg/l of sand, the ratio required for most state and federal projects. The high-efficiency pump only operates when pressure drops during spraying, resulting in reduced fuel consumption and less engine wear.

Neal designs its HDP systems for longevity and low maintenance. The pumps feature leather cups that provide excellent internal sealing and durability for increased productivity and reduced downtime. Unlike diaphragm pumps that require daily flushing to prevent the rubber seals from degrading, users only need to flush the hydraulic piston pump once a year, if winterizing, which can save as much as 30 minutes per day in production



time. The leather seals can pump as much as 750,000 l of mix, with normal sand load and good maintenance.

The DA 350 comes standard with a 38 hp Kohler gasoline engine, or an optional 35-horsepower Kubota diesel engine. Both models feature an unloading valve on the auxiliary pump for easy engine starting. Additionally, the unit's power steering provides excellent maneuverability and the tightest turning radius in the industry. The DA 350 features infinitely variable

speed control from 0-17.7 km/h in forward and reverse, and its hydrostatic rear-wheel drive gives precise control on grades and uneven surfaces.

To ensure its customers know how to properly operate and maintain the machines, Neal offers free training seminars at its Anniston, Alabama, location. All machines are tested under load before being shipped to its customers.

Source: Neal Manufacturing

Bergkamp Congratulates Downer EDI Works for ISSA President's Award

Bergkamp Inc., based in Salina, Kansas, congratulates Downer EDI Works of Somerton, Australia, for its recent distinction of winning the 2017 ISSA (International Slurry Surfacing Association) President's Award for Excellence. This is the first time in more than 10 years that an organization outside of the U.S. has won the prestigious ISSA President's Award, which recognizes contracting achievements that exemplify the highest quality of workmanship and compliance with the best standards of practice, including contract complexity, appearance, schedule completion, customer satisfaction and safety. The award was based on Downer's delivery of the VicRoads state-wide micro surfacing contract, which took place in 2015 and 2016. Bergkamp M1 Self-Propelled Slurry Seal and Micro Surfacing Pavers played a large role in the project.

VicRoads manages the Victorian arterial road network in Victoria, a state in South-east Australia, which is an integral part of the overall transport system. The VicRoads micro surfacing project consisted of work on all sites for the state government's arterial network, including interstate highways and rural routes. The project spanned across 3 state road authority regions, including 42 separate sites, with completion timelines for each site. It was required to be completed between November 2015 and April 2016.

"I would like to acknowledge the support of Bergkamp in this award. The continued support and relationship we have has been instrumental in our success," stated Paul Price, national manager – Pavement Preservation, at Downer.

The M1 micro surfacing paver reduces the number of construction joints by receiving a constant supply of material while the machine is working. Bergkamp's M1 and M1E are the only full-size continuous slurry seal and micro surfacing pavers manufactured in the world. They are ideal

for all jobs – from residential streets to mainline paving of interstates – including projects with strict quality requirements.

"This award recognizes some of the strategies we have employed in recent



years, with operator training conducted both in Salina, Kansas, and also locally here. Our guys are empowered with knowledge and highly supported when needed, and it is a credit to Bergkamp that we continue this, given the geographical separation. We couldn't be award winners without it!" noted Mr. Price.

Parameters for the VicRoads project included the following:

- Application of micro surfacing to improve specified sites' shape and ride quality in predominantly 2-coat applications to correct wheel path deformations (ruts) and ride, using 7mm (Type III) material.
- Provision for all required traffic management for works including advance notice of works using variable message boards (3 days prior minimum) and the use of mobile truck-mounted attenuators on specified freeway sites.
- Reinstatement of all pavement markings to sites, including audio-tactile line marking, within 5 days, post surfacing.

In addition to the project's general parameters, some sites were located in environmentally/heritage-sensitive and significant areas, for which special provisions had to be made. Also, some existing sites required their excess binder present to be removed prior to overlay using high-

pressure water blasting.

ISSA chose Downer for the President's Award, because the VicRoads project met all judgement criteria:

- Safety – the project was completed with



no recordable safety or environmental incidents.

- Completion Date – the project was completed within contractual specified timeframes.
- Subcontracting of Works – all Pavement Preservation techniques in relation to this project were completed solely by Downer EDI Works Pty Ltd.
- Project Complexity – Geographic separation of sites required multiple mix designs and raw material supply points, project management of multiple suppliers, delivery of all contract requirements for network stakeholder notifications and post-surfacing activities, such as line marking.

The Award was presented to Downer at the Annual Meeting of the Asphalt Emulsion Manufacturers Association, the Asphalt Recycling & Reclaiming Association and the International Slurry Surfacing Association in Tucson, Arizona, last February.

Source: Bergkamp Inc.

InfraStructures

reaches more heavy machinery and specialized equipment users than any other trade magazine in Canada.

The Media Kit is available on InfraStructures' website at www.infrastructures.com



Dynapac's New CC950D Offers Small Size, Big Impact

Dynapac's new CC950D small tandem asphalt roller is ideal for small-scale compaction work, such as bicycle paths, narrow roads and small parking areas. It fulfills a need for high-quality compaction in areas that are difficult to reach with a larger roller. The small tandem roller comes with an operating mass of about 1.45 t and a 965 mm drum width.

The Dynapac CC950D features a water-cooled, 3-cylinder, 4-stroke Kubota D722-E4B-KEA-2 diesel engine. The 20 hp engine is Tier 4 final compliant. Together with the large drum diameter and drive motors connected in series, it contributes to excellent accessibility and hill-climbing capacity. High clearance along both edges of the drums facilitates compaction close to elevated structures, such as curbs.

The Dynapac CC950D vibrates at 4,200 vpm (70 Hz) on the front drum with a static rear drum. Shock absorbers on the rear drum minimize vibrations in the operator's platform, which also offers ample



space and ergonomically positioned steps to improve operator comfort. Contractors can work for long periods of time thanks to the unit's 190 l water tank.

The Dynapac CC950D design revolves around minimizing maintenance. Both the steering hitch and steering cylinder are maintenance-free, and the few remaining service points are easily accessible. The

instrument panel features an hour meter, horn switch, brake warning lights, battery charging indicator, engine oil pressure indicator and glow plug for aiding engine start during cold temperatures.

A foldable rollover protection system, or ROPS, comes standard so contractors can minimize transport height.

Source: Atlas Copco

A poster for the AORs 2017 Municipal Public Works Tradeshow. The top left features the logo of the Association of Ontario Road Supervisors. The main text reads "AORS 2017 MUNICIPAL PUBLIC WORKS TRADESHOW". Below this, it says "JUNE 7-8, 2017 AT THE PERTH EAST RECREATION CENTRE, MILVERTON, ONTARIO". The bottom left has a yellow banner with the text "OVER 200 INDOOR AND OUTDOOR EXHIBITS" and "DELEGATES AND EXHIBITORS REGISTER AT www.aors.on.ca.". The bottom right features the logo of the Perth County Road Superintendents' Association, which includes the word "Perth" in a stylized font and the text "PROUDLY HOSTED BY" and "PERTH COUNTY ROAD SUPERINTENDENTS' ASSOCIATION". The background of the poster shows a large outdoor event with many vehicles and people.

An advertisement for InfraStructures. The top text reads "We're getting ready for next winter!" and "Don't miss the Annual WINTER ROAD MAINTENANCE & SPECIALIZED EQUIPMENT Issue". Below this, it says "For many years InfraStructures has been the best way to reach Snow Removal Professionals everywhere in Canada." The bottom text reads "Advertise with us! The complete media kit is available online at www.infrastructures.com". The bottom right features the InfraStructures logo and the text "Deadline is July 15, 2017! Info: 416-795-1295". The background of the advertisement shows a snowplow clearing a road.

Working Along the Autobahn: SENNEBOGEN 718 for Embankment Maintenance

Hälbich Dienstleistungs GmbH uses a SENNEBOGEN 718 E-series with Westtech Woodcracker cutter head to clear embankments along autobahn A8.

Hälbich Dienstleistungs GmbH from the county of Rosenheim, in Germany, provides its clients a variety of services centered around wood and nature. What these services actually provide is exhibited by a new E-series SENNEBOGEN 718 clearing the embankments along autobahn A8.

The A8, the autobahn from Munich to Austria, is one of the primary routes taken by Germans traveling south for vacation. A notorious feature of this autobahn, also known from the traffic jam reports on the radio, is Irschenberg hill, an ascent in the foothills of the Alps that inclines the A8 up to 7% in some areas. All along this scenic route, Hälbich Dienstleistungs GmbH clears the bridge embankments – a necessary undertaking to preserve the material supporting bridges and underpasses.



latest addition to its fleet, a SENNEBOGEN 718, with great success. The machine, delivered by sales and service partner Fischer & Schweiger in October 2016, is ideal for working on embankments with its 13 m telescopic boom. With a Westtech Woodcracker attached, operator Max Steinecker can securely grab and chop soft wood up

to 25 cm in diameter.

"Thanks to an outstanding range of around 15 m, the combination of cutter head and telescopic boom makes it superior to any other material handler," said Mr. Steinecker.

Even with a full load, the rugged, mobile undercarriage with 2-point outrigger system and support plate keeps the machine firmly and safely on the road.

Another benefit of the machine, especially when used on the autobahn, is its compact size. With outriggers deployed, the 718 is just 3.90 m wide and 5.31 m long. The swivel radius of the rear is just 2.38 m, not only saving traffic space but also making room for

along the autobahn with flexibility. And the machine can make the trips from site to



site itself thanks to approval for road use. A flatbed trailer is enough for transport over longer distances.

Max Steinecker uses the SENNEBOGEN 718 to clear bridges from above or underpass embankments from below. In either case, the Maxcab comfort cab, which can be elevated by 2.7 m, offers him an ideal overview of the work area.

The excellent visibility is one of the most important safety factors in this application, especially since coworkers are at work all around him with chainsaws.

"The SENNEBOGEN 718 is a perfect addition to our fleet. The extensive range and flexibility of this mobile machine means autobahns, railways and roads can be cleared more quickly and more safely – the ideal machine for us," adds Max Steinecker.

Source: SENNEBOGEN GmbH



Another machine at work in a similar application

On behalf of the autobahn maintenance authority, Hälbich has been utilizing the

additional equipment and storage on site. Hälbich uses the SENNEBOGEN 718 all

Looking for a supplier's website?
Visit www.infrastructures.com

New SubZero Series from Ring-O-Matic

Ring-O-Matic Inc. has just released its new SubZero Series line of vacuum excavators that allow full operation in below-freezing temperatures. The units are available as trailer- or truck-mounted systems that can be customized to the owner's specifications.



The SubZero Series can be added to any standard VX Vacuum ranging from 568 to 11,350 l spoil tanks with a range of 17 to 85 m³/min. Recommended, optional jetter capabilities are available for cleaning lines up to 30 cm.

The units feature increased water capacity over standard units. A dedicated jetter pump delivers 68 l/min at 138 bar. The machine can also be equipped in the standard hydro excavation package with 276 bar / 22.7 l/min pump.

Other features include insulated water tank enclosures, heated valves, a fully enclosed water and jetter reel cabinet, power hose reels, heater, 6-way power boom and heavy-duty, 6,350 kg torsional axles.

Source: Ring-O-Matic Inc.

With more readers across Canada than any other trade magazine **InfraStructures** offers you the **widest coverage** available to advertise your products and services.

With readers involved in all aspects of the industry **InfraStructures** offers you the **deepest coverage** available to advertise your products and services.



Why advertise anywhere else?

Choose **InfraStructures** for your next campaign.

GEOROCFOR^{INC}

ACCESSORIES

DRILLING SIMPLIFIED

Innovation/Quality/Adaptability

Xs Drill[®]

Overburden systems
Drilling tools

MANUFACTURE
OF DRILLING TOOLS
FOR OVER 25 YEARS

GEOROCFOR
PRODUCTS ARE
USED AROUND THE
WORLD IN
CIVIL WORK,
FOUNDATIONS,
WATER WELL,
MINING
AND TUNNELING

www.georocfor.com

We're getting ready for the
International Construction & Utility
Equipment Exposition (ICUEE)
that will be held in Louisville, Kentucky
on October 3-5, 2017.

Send us your ads or news releases
to be featured in the September issue of

Advertise with us!

The complete media kit is available online at
www.infrastructures.com

InfraStructures

Deadline is August 15, 2017!

Info: 416-795-1295

OAPC & ORBA Celebrate a New Chapter and Outstanding Service

The Ontario Asphalt Pavement Council (OAPC) a council of the Ontario Road Builders' Association (ORBA) recognized outstanding service to the association and industry at its 43rd annual general meeting and awards luncheon at the Fairmont Royal York Hotel in Toronto on March 30th. During the luncheon the Earl Kee Volunteer of the Year, King Beamish Excellence and Joe Bunting Mentorship Awards and MTO Paver of the Year Award were presented.

This year's annual general meeting signified a unique time for the OAPC and ORBA as the event marked the celebration of the amalgamation of the Ontario Hot Mix Producers Association (OHMPA) with ORBA. OHMPA officially became the Ontario Asphalt Pavement Council of ORBA on January 1, 2017.

"We are delighted to come together and honor the legacy of OHMPA and recognize excellence in leadership in the asphalt industry," said ORBA COO Geoff Wilkinson. "This is also a wonderful opportunity to celebrate this new chapter as we forge ahead together as one unified and strong



From l. to r.: Geoff Wilkinson, ORBA COO, Peter Jesik, Rankin Construction plant manager, Vince Aurilio, OAPC ED.



From l. to r.: Donn Bernal, OAPC past chairman, Steve Manolis Coco Asphalt Engineering general manager, CAE.

voice for the road building industry."

"The association, its members and the industry have greatly benefited from the contributions of these individuals," said OAPC executive director Vince Aurilio. "OAPC's awards program recog-

Reduced Carbon in Infrastructure Projects Can Also Reduce Costs

When you reduce carbon you can also reduce costs, but you need to consider it at an early stage. Mike Putnam, president & CEO of Skanska UK, is clear about what has to be done to reduce carbon in infrastructure projects.

"You can't just tackle carbon when you're part way through a project – because the die is already cast. What you need to do is start up-front when you're almost got a blank sheet of paper, and say 'What can we do to take carbon out?'," he says in the latest episode of Construction Climate Talks.

Mike Putnam is also Chair of the Green Construction Board which developed the Infrastructure Carbon Review, which sets out a series of actions to achieve carbon reductions of 24 million t/y from the construction and operation of the UK's infrastructure assets by 2050, yielding a potential net benefit of up to £1.46 billion (\$2.5 billion) per year.

"What we have been able to demonstrate is that by going at the low carbon, trying to take carbon out of construction – whether it's in the capital phase or the operational phase – it has the added benefit of reducing cost as well," he adds.

Mike Putnam says that it is also important to build a culture where everybody involved in the business and across the industry really understand what the green agenda is all about.

"It's only collaborating across the industry that will bring the



whole industry up to a much higher level," Mr. Putnam says.

See Mike Putnam talking about taking carbon out, rewarding success and collaboration, in the 10th episode of Construction Climate Talks. The Construction Climate Talks series, produced by the Construction Climate Challenge initiative, highlights some of the most important issues in climate sustainability today.

The Construction Climate Challenge (CCC) is an initiative hosted by Volvo Construction Equipment to promote sustainability throughout the entire construction industry value chain and provide funding for environmental research. The CCC is a part of the Volvo CE commitment to WWF's Climate Savers Program.

Source: Construction Climate Challenge



nizes and celebrates individuals who make a positive difference in the asphalt industry, one road at a time."

On behalf of Rankin Construction Incorporated, Peter Jesik, Rankin plant manager and Dave Evans, project manager, ac-



From l. to r.: Bruce Armstrong, OAPC director & Canadian Asphalt sales director, Marianne O'Shaughnessy, IKO Industries Ltd, Asphalt Terminal manager.



From l. to r.: Mike McLean, OAPC chairman, Bert Hendriks, R.W. Tomlinson Limited, executive vice president.

cepted the 2016 MTO Hot Mix Paver of Year recognition award for work completed on Hwy 3 between Port Colborne and Fort Erie.

Steve Manolis, general manager CAE for Coco Asphalt Engineering, was named the 2016 Earl Kee Volunteer of the Year.

Mr. Manolis is Chair of the Environment Committee, and worked to establish a Benzo(a)Pyrene technical standard with the Ontario Ministry of Environment and Climate Change. His contributions also played a key part in the 2015 publishing of the 5th edition of the OAPC's Environmental Practices Guide, and the publishing of several Quality of Asphalt Pavement Task Force bulletins, including a white paper on Asphalt Cement Quality and Specifications.

Marianne O'Shaughnessy, Asphalt Terminal manager for IKO Industries Ltd. in Hamilton was awarded the King Beamish Excellence Award for her tireless volunteer efforts through the decades and her contributions to the OAPC Marketing Committee.

R.W. Tomlinson Limited's Bert Hendricks, executive vice president of the Municipal Division, was awarded the 2016 Joe Bunting Mentorship Award in recognition of his passion, dedication and commitment to the advancement of the hot mix asphalt industry and his mentorship of numerous individuals that have made a positive impact throughout

the years. The Joe Bunting Mentorship Award recognizes the importance of mentorship to the community.

Source: Ontario Asphalt Pavement Council (OAPC)

VTC MFG

Call us for more information 450-379-5387
2430 Principale Street, St-Paul-d'Abbotsford, QC J0E 1A0
www.vtcmfg.com

We're getting ready for the Waste & Recycling Expo Canada that will be held in Niagara Falls on October 25-26, 2017.

Send us your ads or news releases to be featured in the October issue of

Advertise with us!
The complete media kit is available online at www.infrastructures.com

InfraStructures
Deadline is September 20, 2017!
Info: 416-795-1295

B2W Software Teams with Industry Expert Mike Vorster to Help Contractors Improve Construction Fleet Management

B2W Software recently announced the company is working together with Mike Vorster, a highly regarded educator and consultant on construction equipment management, to help contractors improve asset utilization while cutting ownership and maintenance costs.

Mr. Vorster has developed standardized processes, quantitative tools and a blueprint for implementation through his Construction Equipment Management Program consultancy C.E.M.P. Central. He endorses the B2W ONE Platform as the industry leading software solution to support the structured approach to fleet management known as the "CEMP Way".

Mike Vorster will complement the B2W team, providing contractors using B2W Maintain with the added benefit of his implementation, process improvement and best-practice expertise developed over the past 25 years. He will also consult with B2W Software on development of new

features and capabilities for B2W Maintain.

"Implementing the CEMP Way and achieving the uptime and cost advantages can't be done without the right software," according to Mr. Vorster. He says B2W Software, and the B2W Maintain solution specifically, give contractors a common enterprise-wide system, a single database and source of truth for equipment related information, and advanced functionality for managing maintenance processes.

"I'm impressed with the ONE platform today, and I'm excited about B2W Software's aggressive commitment to ongoing development in response to market requirements," adds Mike Vorster. "The software is intuitive and easy to use, which is vital to acceptance and success in a construction environment."

"Equipment is essential and expensive, but a lot of contractors manage their fleets reactively, with incomplete data and a series of fragmented, inefficient processes

that rely on paper and spreadsheets," according to Paul McKeon, CEO and founder of B2W Software. "Mike shares our vision that there is tremendous improvement potential through standardized processes and data-driven decision making supported by specialized software."

Mr. McKeon says that the CEMP blueprint for implementing and using quantitative tools in construction equipment management has been well received in the heavy civil construction sector. He notes that Mike Vorster has worked successfully with several companies currently using B2W Maintain.

B2W Maintain is a Computerized Maintenance Management System (CMMS) that links shop, field and management teams. The software manages all aspects of the maintenance process, drives preventive programs and provides enterprise-wide access to equipment status and history in real time.

**ARCHITECT
OF YOUR
SUCCESS**



**MERLO IS THE MOST
PRODUCTIVE • COMPACT • SAFEST • COMFORTABLE
FUEL EFFICIENT • TELEHANDLER ON THE MARKET**



CALL US RIGHT NOW AND SEE FOR YOURSELF 1 877 641-8355 MANULIFT.CA



Michelin Introduces Power Digger at The Rental Show

Mike Vorster is the founder of C.E.M.P Central, a teaching, training and consulting organization that has helped numerous companies advance the management of construction equipment fleets. He is also professor emeritus at Virginia Tech, where he has taught in the Construction Engineering and Management Program since 1986, and the author of the industry-standard guide and reference text Construction Equipment Economics as well as more than 100 articles published by Construction Equipment magazine. Mr. Vorster is a member of the National Academy of Construction and the academic advisor to the Association of Construction Equipment Managers. He holds a BS in Civil Engineering, an MBA from the University of Cape Town and a PhD from the University of Stellenbosch.

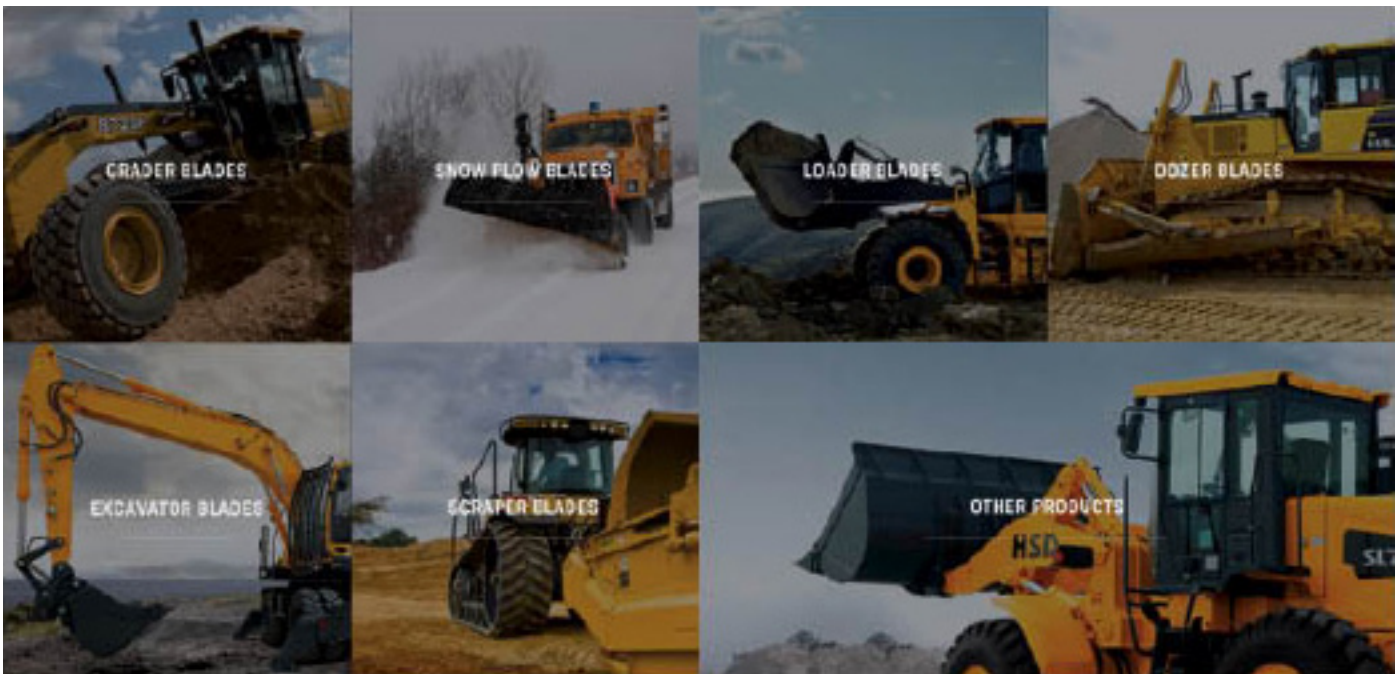
Source: B2W Software

Michelin introduced its newest compact-line tire at the ARA Rental Show in Orlando, Florida. The MICHELIN® Power Digger™ is a bias tire designed for wheeled excavators with a dual fitment for both original equipment and replacement applications.

"With 80% of wheeled excavators in the market operating with a dual configuration, the Power Digger provides a superior solution for construction performance," said Justin L. Brock, North America compact line business manager for Michelin Agriculture tires. "To offer true market value, the tires that support this equipment must have resistance to everyday site impacts – the Power Digger offers this and more."

Designed for construction applications, the 10.00-20 Power Digger tire offers bias construction, thicker sidewalls and a directional-lug design for excellent stability. The tire is structurally designed to allow for more stability in the contact patch area as the machine carries out 360° movements on varied surfaces. The robust sidewalls are thicker to better resist impacts. The pronounced center arch of the tire contains more rubber to provide excellent wear. The tire also has a higher-load index of 147, which is superior to competitive tires.

Source: Michelin North America, Inc.



VBL TM **ValleyBlades**
LIMITED

www.valleyblades.com • Contact your local Valley Blades Distributor

VISIT US AT



June 7 - 8, 2017 - Milverton, ON
BOOTH 132/133 Arena

MAN Engines Increases its Commitment to the Americas

MAN Engines presented a selection of products from its engine range for construction machinery and technology, as well as for power generation, at the IFPE fair in Las Vegas in March 2017. As such, the engine department of the German commercial vehicle manufacturer MAN Truck & Bus is signaling its intention to significantly expand its business as an engine supplier for off-road applications and energy production/ generator sets in the American market.

MAN Engines develops, produces, and sells a wide range of efficient diesel and gas engines, as well as axles and transfer cases, around the world for extremely varied applications in many industries. MAN Engine's motivation for becoming more active in the U.S. is based on its existing access to the market, which it has enjoyed for more than 20 years through its subsidiary, MAN Engines & Components, Inc. in Pompano Beach, Florida.

"Thanks to our quality products

developed in Germany and our decades of market expertise as an American company, we see ourselves as the perfect engine partner for all OEM manufacturers interested in volume business," said Ricardo Barbosa, CEO of MAN Engines & Components Inc..

The company's commitment will be further underlined by the appointment of Jürgen Haberland, an industry expert and currently head of Off-Road MAN Engines, as Business Development manager in the U.S.

As a division of MAN Truck & Bus, MAN Engines benefits considerably from the large-scale production experience which this leading European commercial vehicle manufacturer can call on with regard to sophisticated components and the latest technology.

Building on this strong foundation, MAN



Engines provides the required technology and products for new partnerships in the field of construction site and mining vehicles. MAN Engines covers a power range from 400 to 1,110 hp with 3 engine series D2676, D3876, and D2862 in 12.4, 15.2, and 24.2 l capacities. The engine dynamics are adjusted to match the particular application

First MTU Engines from Rolls-Royce for KATO Excavators

For the first time, Rolls-Royce is supplying MTU-brand engines to Japanese construction machinery manufacturer KATO for use in its excavator segment. The engine, a 6-cylinder inline Series 1000 unit delivering 280 hp, will be used to power a 30 t hydraulic excavator from KATO's HD



range. Equipped with an SCR system, the MTU engine meets the specifications of Heisei 26 – the emissions stage in effect in Japan since last year. The MTU brand is part of Rolls-Royce Power Systems.

"We were very impressed by the performance of MTU engines in our rough-terrain lifting cranes, so with our eye on the Heisei 26 emissions standard, we're again choosing renowned drive technology from MTU for our new excavator," said Mitsuo Okada, director & executive officer from KATO.

"Japan is a high-tech country where we already have our MTU engines in service in wheel-loaders and cranes. Now we're delighted to consolidate our successful partnership with KATO by entering the Japanese excavator market too," said Bernd Krüper, vice president of Industrial Business at MTU.

The hydraulic excavator in question is



destined for off-highway service, and the engines powering it must be capable of adapting quickly to unpredictable changes in load imposition. Meeting the special demands of the excavator on the engine dynamics demanded a high level of technological input.

Source: Rolls-Royce Holdings plc

DEUTZ at CONEXPO-CON/AGG 2017

using wastegate turbocharging or variable turbine geometry. In this way, MAN diesel engines provide sufficient charging pressure and dynamics for wheel loaders, excavators, dump trucks, and mobile cranes, even at low revs in the efficient engine speed range.

MAN Engines also sees many potential applications for stationary gas engines in energy production and combined heat and power generation in public facilities, industrial applications, and homes. Thanks to the potential for saving energy in these applications, and the resulting cost savings, this sector offers a lot of promise. In addition to considerable experience in combined heat and power generation in the U.S. alone, MAN Engines also has wide-ranging experience thanks to its position as the market leader in Germany, with many thousands of installed engines. As such, the company offers the corresponding product portfolio.

Source: MAN Truck & Bus

DEUTZ was at CONEXPO-CON/AGG in Las Vegas, last March, to present its expanded engine portfolio, now ranging from cubic capacities of 2.2 to 18 l. Under the slogan "FUTURE DRIVEN – engine technology for tomorrow", DEUTZ was showing several new gas and diesel engines, for the first time together in the U.S.

This year DEUTZ occupied a 220 m² booth in the South Hall where the company's new 4-cylinder TCD 5.0 and TCD 9.0 diesel engines and the 6-cylinder TCD 12.0, TCD 13.5 and TCD 18.0 were on display.

The DEUTZ TCD 5.0 will be introduced worldwide in 2019 to meet the next EU Stage V and US Tier 4 final emissions standard. This particularly compact turbocharged and charge air cooled 5 l diesel generates 135 to 200 hp. The engine also conforms to the downsizing principle,



by producing more power from a smaller cubic capacity, enabling customers to replace larger displacement engines with a more fuel efficient compact engine. The TCD 5.0 is a brand new design; minimum pipework and fewer components are some stand-out features.

Source: Deutz AG

ADF Diesel

Distributor of replacement components for all your equipment.

THE EVIDENT
CHOICE FOR YOUR
DIESEL ENGINE

ENGINES AND TRANSMISSIONS	TURBOS AND FUEL INJECTION	PARTS AND ACCESSORIES	SEATS	AND MUCH MORE!
				TRY US TODAY!

8 BRANCHES (QUÉBEC AND ONTARIO)

1 (855) ADF-7770

WWW.ADFDIESEL.COM

SCANIA
 ISUZU
 KOHLER

BorgWarner
 HOLSET
 Garrett

FP DIESEL

 GRAMMER

IMT Introduced the New Dominator III Mechanics Truck at CONEXPO-CON/AGG 2017

Iowa Mold Tooling Co., Inc. (IMT), an Oshkosh Corporation company introduced the new Dominator® III mechanics truck, an enhanced Dominator I package, 5,445 kg telescopic crane and air compressor at CONEXPO-CON/AGG 2017 in Las Vegas.

"The core values IMT have always relied on – tried-and-true durability, reliability, value innovation and delighting customers – continue to influence every enhancement and upgrade we make to our mechanics trucks," said Jim Hasty, general manager of IMT. "Increasing the capacity of the Dominator III and crane package is a direct response to our customer's evolving needs."

The Dominator III package was enhanced to meet the needs of customers who require more lifting capacity than the 4,535 kg maximum offered by the Dominator II. The weight of the Dominator III model has been reduced by more

than 227 kg, making it significantly lighter than previous models, while maintaining stability and providing extra lift performance in critical work zones.

"The new Dominator III body includes enhancements to provide operators improved durability along with all the benefits they expect from IMT," said Mr. Hasty. "We upgraded several aspects of the Dominator III and Dominator I to expand our truck's capabilities in response to our customer's growing application needs."

IMT updated the Dominator I mechanics truck crane body, which now supports an 8600 crane package. The telescopic crane now has an increased capacity, most

evident when lifting between 15° and 60°.

The IMT CAS40P-AW air compressor is designed for use in all weather conditions, with specific improvements to its capabilities in cold weather, such as a thermal valve in the hydraulic circuit of the machine.

Source: Iowa Mold Tooling Co., Inc.





ACCESSORIES MACHINERY LIMITED
Phone: 1-800-461-1979
Fax: 1-877-544-5030 • Internet: www.aolaml.com



BUCHER schörling
Full-Size and Compact Vacuum Sweepers From 1 to 10 m³
USED STREET SWEEPERS VACUUM OR MECHANICAL
www.usedsweeper.co

SWEEPERS AVAILABLE FOR RENT



- Replacement Parts for Most Makes of Sweepers
- Street Sweeping Brushes
- Weed Brushes




On-Board Weighing System
Weighlog 200




- Ensures correct loading of vehicles or product
- 5 display channels
- Static and dynamic weighing modes
- Printer compatible

RDS TECHNOLOGY
ENTER PRECISION WEIGHING

1-800-363-8727

INNOTAG
INDUSTRIAL

2080 Pierre-Louis-Le Tourneur Street, Beloeil, QC J3G 6S8 • 450-464-7427
www.innotag.com • [/innotagdistributionsinc](https://www.facebook.com/innotagdistributionsinc)

Elgin Sweeper Offers Autocar Cab-Over Chassis Option for its Broom Bear® Sweeper

Elgin Sweeper has introduced an Autocar, LLC cab-over chassis option for the Elgin Broom Bear® single-engine mechanical sweeper. The first commercially available cab-over chassis for the Broom Bear provides a tighter turning radius and best-in-class in-cab visibility.

"We are proud to collaborate with Autocar to develop the only single-engine, cab-over mechanical sweeper in the industry," said Adam Braun, associate product manager, Elgin Sweeper. "This chassis package for the Elgin Broom Bear will exceed the maneuverability and visibility needs of our municipal and contractor customers handling everything from heavy-duty construction debris sweeping to light street maintenance."

Featuring a 3454 mm wheel base, the new cab-over chassis is equipped with a Cummins ISL 9 diesel engine rated at 260 hp @ 2200 r/min, with 720 lbf ft of torque. The chassis also features an Allison



3500 transmission and a 2-speed rear axle.

The new chassis accommodates the optional 4.1 m³ hopper without increasing the sweeper's wheelbase. This allows for increased capacity of sweeping debris without sacrificing maneuverability. Operator ergonomics are optimized on both sides of the factory dual steer system.

The Elgin Broom Bear is designed for

heavy sweeping of such granular materials as millings and gravel. Simple sweeper controls make it easy to operate. With its highway speeds and short wheelbase, the Broom Bear is suited for both congested urban areas and remote rural locations.

Source: Federal Signal Corporation

From Dakar to Moscow in Record Time

Starting from Dakar, Senegal, on April 22nd, Rainer Zietlow, Peter Bakanov and Georgy Gloube drove their Volkswagen



Amarok V6 TDI, fitted with Goodyear Wrangler All-Terrain Adventure tires, to Moscow, Russia, in 3 days, 4 hours and 54 minutes.

Covering 8,000 km and passing through 10 countries in a record pace, the team has set a world record for the fastest drive from Dakar to Moscow.

Source: Goodyear

Mack® Granite®, Granite MHD Models Featured at the 2017 Work Truck Show

Mack Trucks featured the Mack® Granite® at the 2017 Work Truck Show March 14-17 at the Indiana Convention Center, Indianapolis.

Visitors to Mack Booth saw durable and rugged Mack Granite models, including the Mack Granite Medium Heavy Duty (MHD) model, which is weight optimized and can be configured as a Class 7 or Class 8 vehicle.

"The Mack Granite and Mack Granite MHD are versatile trucks which can handle the most severe jobs because of Mack's pioneering legacy of developing durable and reliable vehicles," said Tim Wrinkle, Mack construction product manager.

Mack also highlighted its extensive uptime solutions, including an update on its Mack Certified Uptime Centers and the fully integrated GuardDog® Connect telematics platform. Standard on all Mack models with Mack engines, GuardDog Connect provides proactive monitoring of a truck and its powertrain for potential issues that could lead to unplanned downtime.

Working with Mack's OneCall™ uptime agents and Mack ASIST, GuardDog Connect enables real-time diagnosis of issues, scheduling of repairs and confirmation that needed parts are in stock and ready to install, all while a truck is still on the road.

Source: Mack Trucks



Appointments

VMAC is pleased to announce **Stuart Coker** has accepted the position of director of Operations. Responsible for providing leadership and management of VMAC's production, execution and planning of manufacturing operations.

Stuart Coker began his career at VMAC almost 20 years ago, and has worked in various quality and engineering roles. Early in his tenure at VMAC, he led a team of engineers on a project for Lincoln Electric to develop the Air Vantage 500 which combined the functions of a Welder, Generator and Air Compressor. Prior to this most recent promotion Mr. Coker gained valuable experience in other positions including Quality Engineer and Quality & Engineering manager. Most recently, as the director of Operational Excellence, he focused on optimizing organizational efficiency while fostering a positive work environment and maintaining lean methodology.

"Stuart's dedication and ongoing commitment to VMAC is exemplary", says Jim Hogan, president of VMAC. "We couldn't be happier that he has accepted this role."

"I'm honored to be given this opportunity, and I look forward to helping VMAC continue to grow and develop with our customers", says Stuart Coker. "We're just beginning our lean journey, and there's lots of opportunity to refine our manufacturing operations even further. Continuing to offer a world-class product to our customers is our number one priority."

Source: VMAC Global Technology Inc.



JCB has announced the appointment of **Richard Fox-Marrs** as president and CEO of JCB Inc., responsible for JCB operations in North America, including sales and support for the construction, agricultural, rental, government and defense industries. Additionally, Mr. Fox-Marrs is responsible for production at JCB North America's Savannah headquarters, where the company manufactures the 3CX backhoe loader, skid steer and compact track loaders, along with the military specific High Mobility Engineer Excavator and Light Capability Rough Terrain Forklift.

"As JCB's senior executive in North America, Richard Fox-Marrs will further our position as a global leader in technical innovation, product quality and customer service, and accelerate our strong business performance and growth across all business sectors," said Graeme Macdonald, JCB CEO.

Richard Fox-Marrs is a 26-year veteran of JCB. Prior to his current appointment, he served as JCB North America's president of agriculture. His previous positions included managing director of the Loadall telescopic handler business unit and managing



director of JCB's global agricultural division. Mr. Fox-Marrs' work in the North American market dates back to 2001 when he was responsible for establishing JCB Agriculture in North America.

Richard Fox-Marrs currently serves on the board of the Association of Equipment Manufacturers (AEM) and has served on the Farm Equipment Council in the UK and was chairman of the Agricultural Engineers Association (AEA) Farm Equipment Council in 2013-2014. He also served as a board member for AEA and represented the UK on the European Committee of Agricultural Machinery Manufacturers Associations Board.

JCB is a privately owned, global company that manufactures more than 300 different machines from 22 plants in countries on 4 continents, including the U.S., UK, China, India and Brazil. Equipment lines offered include: backhoe loaders, Loadall telescopic handlers, excavators, wheel loaders, rough terrain forklifts, compact excavators, skid steer loaders, compact track loaders, compaction equipment, aerial work platforms, and Fastrac tractors.

Source: JCB

Hatz Diesel of America announced that **Eric Hoffmann** has been added to its growing staff as application engineer. Mr. Hoffmann joins the firm from Cummins where he was an application engineer for its diesel engines. His background also includes powertrain control system development and production engineering experience in the OEM/Off-Highway markets along with a Masters in Mechanical Engineering. He will provide technical and engineering support to the Hatz sales team, distributors and OEM customers.

"I'm excited to join Hatz", says Mr. Hoffmann. "They are a fast-growing company that is easy to work with. Our goal in serving Hatz customers will be to help them bring their products to market faster through personalized attention and dedication to their needs."

Hatz is a worldwide leader in the manufacture of high quality diesel engines from 3 to 78 hp that are used in industrial, construction, military, marine, railroad, turf care, power generation, material handling, agricultural, mining, transportation, forestry and rental equipment applications.

Source: Hatz Diesel of America



ADDRESS CHANGES

Update your subscription information
or address changes via e-mail:

subscriptions@infrastructures.com



A legacy of hard-working trucks since 1897

A newcomer in the Class 7 & 8 Cabover category

The oldest North American truck brand, Autocar® enters the Class 7 & 8 cabover market with a range of trucks designed for heavy work such as road maintenance and heavy pick-up and delivery, the Autocar Xpert.



The Autocar Xpert is designed to ensure the best sight lines in any cabover or conventional truck. The spacious cab features a huge windshield, side, and rear windows.

The Autocar Xpert can be equipped with an OEM dual steering system. With all controls placed either in the middle, or duplicated and mirrored on both sides.

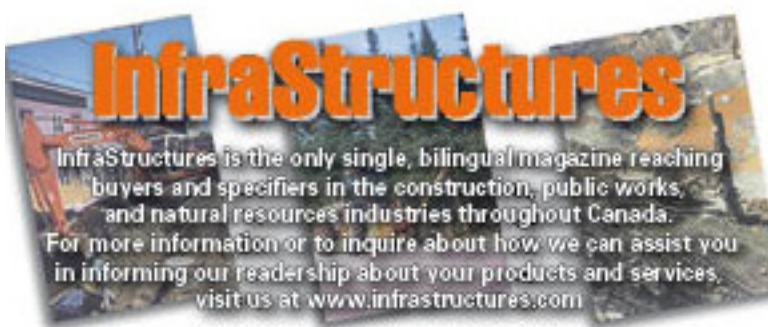
The high performance dual steering gear system is designed for an extra tight turning radius, and the electrical system is designed for dual steer from the ground up, with no third party splicing into a wire harness.



Distributed by:

Accessories Machinery Limited
www.aolaml.com

1-800-461-1979



Free Subscription

Complete the coupon and send it to us by mail at:

InfraStructures Magazine
Subscription Department
4330 Saint-Hubert Street
Montreal, QC H2J 2W7

by fax at:
514-528-9932
or by e-mail at
subscriptions@infrastructures.com

.....send the changes to us by mail or by fax or type-in the information in an e-mail.....

Name: _____
Title: _____
Company: _____
Mailing address: _____
City: _____
Province / Postal Code: _____
Phone: _____
Fax: _____
Website: _____
E-mail: _____

Agenda

APOM Technical Day

May 18, 2017
Sorel-Tracy, QC Canada

Austmine 2017

May 22 - 24, 2017
Perth, Australia

IRT Asia 2017

May 25 - 27, 2017
Bangkok, Thailand

Canada North Resources Expo

May 26 - 27, 2017
Prince George, BC Canada

2017 AORS Municipal Public Works Trade Show

June 7 - 8, 2017
Milverton, ON Canada

INTERMAT ASEAN

June 8 - 10, 2017
Bangkok, Thailand



Atlantic Truck Show

June 9 - 10, 2017
Moncton, NB Canada

Cisma services : Démaroute 2017

June 14 - 15, 2017
Bruguières, France

SIMA Snow & Ice Symposium

June 20 - 23, 2017
Montreal, QC Canada

14th Moscow International Oil and Gas Exhibition / MIOGE 2017

June 27 - 30, 2017
Moscow, Russia

Minexpo Africa

August 10 - 12, 2017
Dar es Salaam, Tanzania

Asia-Pacific's International Mining Exhibition (AIMEX)

August 29 - 31, 2017
Sydney, Australia

APOM Technical Day

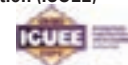
September 14, 2017
Charlesbourg, QC Canada

CanWest Hort Expo 2017

September 27 - 28, 2017
Abbotsford, BC Canada

International Construction & Utility Equipment Exposition (ICUEE)

October 3 - 5, 2017
Louisville, KY USA



AWWA's Annual Conference & Exposition

October 4 - 6, 2017
Las Vegas, NV USA

inter airport Europe 2017

October 10 - 13, 2017
Munich, Germany

Waste & Recycling Expo Canada / Municipal Equipment Expo Canada

October 25 - 26, 2017
Niagara Falls, ON Canada

The Big 5 Dubai - International Building & Construction Show

November 26 - 29, 2017
Dubai, United Arab Emirates

InfraTech

January 10 - 12, 2018
Essen, Germany

BAUMA CONEXPO AFRICA

March 13 - 16, 2018
Johannesburg, South Africa

INTERMAT Paris

April 23 - 28, 2018
Paris, France



COME OUT AND PLAY!



ICUEE 2017 | Louisville, Kentucky | October 3-5

There's only one place you can play with all the new toys in the construction and utility industry before you buy them — ICUEE, North America's Premier Utility Demo Expo. Come get your hands dirty on our 2-mile outdoor test track. Or while exploring 25 acres of exhibits. And learn about the newest technology at our indoor demo stage. Every other year we gather over 950 of the leading manufacturers. So you can come play in our sandbox.

Pre-register now at ICUEE.com and receive the latest show alerts and early bird specials.



LARUE

EXCLUSIVE DEALER

LeeBoy**Rosco**
LeeBoy**LBP**
LeeBoy**DYNAPAC**
Part of the Volvo Group

WINTER IS OVER... PAVING SEASON CAN START!

FINANCING
PROGRAM
START AT
0%

PAVING AND COMPACTION



Asphalt distributor Rosco
Maximizer 3 1900 gallons
Mounted on truck International 7300



Tack tank from 150 gallons to
500 gallons on skid or trailer



Paver LeeBoy 8515 8 - 15 feet



Dynapac tandem roller from
35 inches to 84 inches

SNOWBLOWERS



Snowblower Larue D40
2 augers of 17 inches engine 230 hp



Snowblower Larue D40
Ribbon 32 inches engine 230 hp



Snowblower Larue D50
2 augers of 20 inches engine 300 hp



Snowblower Larue D65 2017 USED
Ribbon of 40 inches engine 365 hp
From 270 to 380 hours

DEADLINE ENGINE TIER 3: DECEMBER 31st 2017

ALSO AVAILABLE:

• ROAD WIDENER LBP RW35A - 2013

Price: \$98,500

• DYNAPAC PAVER F1000T - 2012 (10 TO 20 FT)

Special price: \$320,000

Montréal / Laval

GAÉTAN LANGLOIS

2397, rue Michelin, Laval (Québec) Canada H7L 5B9

Tel.: 450 781-3693 • Cell.: 514 953-3033

Fax: 450 781-3692



Québec

ÉRIC ROY

660, rue Lenoir, Québec (Québec) Canada G1X 3W3

Tel.: 418 658-3003 • Cell.: 418 564-4557

Fax: 418 658-6799