

InfraStructures

CONSTRUCTION • PUBLIC WORKS • NATURAL RESOURCES

Volume 27 • Number 7 • August 2022 • *English Edition*





The Aebi Schmidt Group has acquired the leading Canadian manufacturer of winter maintenance equipment, Équipements Lourds Papineau Inc. (ELP), headquartered in Saint-André-Avellin, Quebec.

With its heavy equipment and attachments for snow removal and road maintenance the company looks back on a history of over 20 years and has established its reputation as a provider of sophisticated technical solutions of high quality.

Aebi Schmidt Canada
1186 Route 321 North (PO Box 5040)
Saint-André-Avellin (Qc) J0V 1W0
Phone: 819 983-5000
www.aebi-schmidt.com

The combination of ELP's heritage with the huge product range and the full-service approach of the Aebi Schmidt Group, enables us to serve our customers in Canada directly, with increased efficiency and more comprehensively.

Please come see us at SWIFT 2022 in Montréal in September.



Volume 27 Number 7
August 2022

PUBLISHER
Jean-François Villard
editor@infrastructures.com


CONTRIBUTING EDITORS
Rob Holden
Philip Lavigne
toronto@infrastructures.com

ADVERTISING SALES
sales@infrastructures.com

ADDRESS CHANGES
Send us your address changes by E-Mail to:
subscriptions@infrastructures.com

TELEPHONE
514-233-1295
613-862-1295
416-795-1295
506-226-2289

MAILING ADDRESS
4330 Saint-Hubert Street
Montreal (Quebec) H2J 2W7

INTERNET
www.infrastructures.com
 /InfraStructuresMagazine



InfraStructures is circulated free of charge to qualified users of heavy machinery and specialized equipment in construction, public works, and natural resources across Canada in both French and English.
The cost of a subscription for one year is \$50 for Canadian residents and US\$75 or €75 for U.S. and overseas.
The content of InfraStructures is available for consultation on the website www.infrastructures.com. It may not be reproduced or transmitted in any form, either in part or in full, without the written consent of the copyright owner.

RETURN UNDELIVERABLES TO
4330 St-Hubert St Montreal QC H2J 2W7

LEGAL DEPOSIT
Bibliothèque Nationale du Québec

DISTRIBUTED BY CANADA POST
Publications Mail Agreement #40052183

A Brief Word...

Planning and bureaucracy may be the most frustrating of adversaries in our daily routine to get the job done, but there is one companion we meet daily, the weather. Extreme double digit temperatures that can harm skin and stress every nerve of man and machine, precipitation that can challenge the rota and cause schedules to be reworked, and reworked again and again.

It is August, and extreme weather is arguably at its peak. Our role, as Canada's leading industry publication is to forewarn and forearm our readers. As that tired expression goes: "Failure to Plan is a Plan to Fail", and planning takes information and insight from trusted sources.

Predicting the weather is also a useful tool, and one that has taunted humanity for millennia, but one thing is no surprise, every season comes, and goes in its own inimitable time and character. We do not have a crystal ball, but it is the future to which we turn first. That future is Winter! It will come when it comes, we have to be ready.

Whether it is maintenance of major arteries, airfields, municipal streets, or car parks, these pages will be full of ideas and equipment that will help you fight the might of the icy grasp of Old Man Winter!

Enjoy the warmth of the sun, and perhaps a paddle at the beach, but be prepared for the chill that will run through your veins as you read this issue of InfraStructures!

Be Safe and Be Happy!



OptiFant 8000 / CityCat 60



BUCHER
schörling



SALES & RENTALS
Vacuum type street sweepers
Different models from 1 m² to 10 m²
USED SWEEPERS IN STOCK



CityCat 5006 / CityCat 2020 XL / CityCat 1000



Accessories Machinery Limited
www.aolaml.com

1-800-461-1979

On the cover: Aéro Mag, a Montreal, Quebec-based company specializing in integrated aircraft de-icing operations and the recovery, recycling, and reuse of de-icing products, commissioned the world's first electrically powered aircraft de-icing truck back in 2020.

Montreal-Trudeau International Airport. (YUL) will host the SWIFT airfield conference from September 13-15, 2022.

BOSS ACQUIRES LIQUID DEICING ASSETS OF VOIGT SMITH INNOVATION

BOSS Products, a division of The Toro Company, recently announced that it has acquired the liquid deicing assets of Voigt Smith Innovation (VSI), a privately-held leading manufacturer of liquid deicing equipment. The terms of the transaction were not disclosed.

VSI is known for its industry-leading liquid deicing equipment for snow and ice

contractors offering both brine makers and applicators, and smart-connected technologies. Based in Le Center, Minnesota, VSI has grown in the liquid deicing market over the past several years through product innovation, education, and industry expertise. As part of the acquisition, the knowledgeable VSI staff will join the BOSS team.

"The addition of VSI products to the BOSS Snowplow portfolio strategically po-

sitions us to expand our support of snow and ice contractors to include liquid deicing equipment and complimentary support staff to advance customer opportunity in liquid deicing," said Jody Christy, vice president, BOSS Snowplow. "The combination of VSI and BOSS products is aligned with our strategic priorities, providing quality solutions, innovative advancements, and service to our customers."

"Application efficiencies and environmental opportunities make liquid deicing an appealing proposition for snow and ice contractors," said Jordan Smith, of VSI. "As liquid deicing grows among contractors, the expertise and credibility of VSI will enable BOSS to meet customer demand. We believe the reputation, strong network, and resources of BOSS as a leader in the snow and ice removal market will enable continued growth in the market."

Source: BOSS Products, a division of The Toro Company

CATERPILLAR TO RELOCATE GLOBAL HEAD-QUARTERS TO DALLAS-FORT WORTH AREA

Caterpillar Inc. recently announced it will move its global headquarters to the company's existing office in Irving, Texas, from its current location in Deerfield, Illinois.

"We believe it's in the best strategic interest of the company to make this move, which supports Caterpillar's strategy for profitable growth as we help our customers build a better, more sustainable world," said chairman and CEO Jim Umpleby.

Caterpillar has had a presence in Texas since the 1960s across several areas of the company. Illinois remains the largest concentration of Caterpillar employees anywhere in the world.

The company will begin transitioning its headquarters to Irving in 2022.

Source: Caterpillar

FOUNDATION SOFTWARE ACQUIRES CONSTRUCTION SAFETY SOFTWARE PROVIDER HARNESS

Foundation Software, LLC recently announced the acquisition of construction safety software provider, Harness Software. With this acquisition, Foundation

Software adds a much-asked-for piece to their ever-growing software platform.

Creators of The Harness Safety App, Harness offers easy-to-use safety tools for specialty contractors, including those in the roofing, electrical and mechanical trades. With Harness, contractors can easily track toolbox talks, inspections, training, certifications and more – increasing jobsite safety and allowing for better management of company health and safety programs.

"When we started Harness Software, our goal was to help as many contractors as possible to improve their health and safety programs," said Tom Whitaker, CEO of Harness Software. "By joining with a large, successful company like Foundation Software, we're able to expand our reach to better achieve this goal."

Harness will join Foundation's expanding construction management platform, which currently features accounting, project management, estimating and takeoff software for specialty contractors, and a construction-specific payroll service.

Source: Foundation Software, LLC

FERROVIAL AGREES TO ACQUIRE A STAKE IN JFK AIRPORT NEW TERMINAL ONE CONSORTIUM

Ferrovial, through its Airports division, has agreed to acquire a stake in New Terminal One, the consortium appointed to design, build and operate the new Terminal One at JFK International Airport in New York (which includes replacing Terminals 1 and 2 and former Terminal 3 of this airport).

Under the deal, Ferrovial is acquiring 96% of The Carlyle Global Infrastructure Fund's 51% stake in New Terminal One. The completion of the transaction is subject to certain conditions precedent, including Port Authority Board approval. Ferrovial's investment would amount to US\$1.14 billion (\$1.48 billion).

With an investment of US\$9.5 billion (\$12.3 billion), the New Terminal One will stand on the site currently occupied by T1, T2, and the former T3 and will offer an enhanced user experience over 230,000 m². The process, which includes demolishing the old terminals and modernizing the infrastructure, will increase the terminal's capacity. Upon completion, it will be the largest terminal at JFK International Airport. Construction will proceed in phases, with the first phase expected to be

completed in 2026. The asset concession runs until 2060.

Ferrovial has been part of the aviation industry since 1998 and has more than 20 years of experience investing, developing, and operating 33 airports around the world, including the U.S., Australia, and Chile. It currently has 4 airports in the UK. With a 25% stake in Heathrow Airport, it is the airport's core shareholder and industrial partner, and it owns 50% of Glasgow,

Aberdeen, and Southampton airports. It is also in the process of closing the acquisition of 60% of Dalaman International Airport in Turkey from YDA Group.

Source: Ferrovial

GOVERNORS AMERICA CORP. RECEIVES CSA CERTIFICATIONS

Governors America Corp. has received the Canadian Standards Association (CSA) Class I, Division 2, Groups ABCD, Class

REVERSIBLE
SNOW PLOWS
WITH TRIPPING EDGE

HEAVY DUTY
MODEL "HD"

PUSHER BLADES

SIDE WINGS

- TRUCK
- WHEEL LOADER
- GRADER

MANUFACTURER
SNOW REMOVAL
EQUIPMENT &
ACCESSORIES FOR
HEAVY MACHINERY

BUCKETS FOR
FRONT END LOADERS
& EXCAVATORS

QUICK ATTACH FOR
FRONT END LOADERS
& EXCAVATORS

FORKS FOR
FRONT END LOADERS
& TOOL CARRIERS

INTERNET : www.edfltd.com • E-MAIL : info@edfltd.com



1-888-649-3331
(514) 866-6859
(450) 649-9461
Fax: (450) 649-1874

1735 Lavoisier, Sainte-Julie (Quebec) J3E 1Y6

CALL US!
TOLL FREE NUMBER **1-888-649-EDF-1**

26 years on the web!

Looking for more stories? Visit
www.infrastructures.com



Specialized tractors, articulated tractors, reversible tractors, bidirectional tractors, transporter tractors, narrow tractors, polyvalent tractors and much more...

Antonio Carraro tractors offers a full range of tractors for green area upkeep, roadways and urban cleaning. Antonio Carraro provides the best solution for operators who work on specialized agriculture field such as orchards and vineyards as well as on steep or rugged terrains.



**We are looking to expand
our dealer network in Canada!**

Contact us for more information

Antonio Carraro Canada
Distribution Importation Jean Gagnon Inc
www.antoniocarraro.ca
179 St-Laurent, Maskinongé, Qc, J0K 1N0
819-626-0166

3228 02, and Class 3228 82 certifications for its CSA ATB Series integral throttle body actuators. CSA certification is recognized throughout North America and Europe, providing assurance that parts have undergone strict testing for safety and performance.

"It is a great accomplishment for us to be certified by CSA for our craftsmanship," said Sean Collins, president of Governors America Corp. "This demonstrates what we already know – that our ATB actuators are top of the line and reliable. We pride ourselves on being a trusted provider for innovative and dependable equipment for customers all over the world."

The CSA ATB Series is designed to control the air and fuel ratio to gaseous fueled engines. By combining fast response times with proven reliability, directly driving the throttle plate and using an internal return spring, Governors America ATBs provide fail-safe operation, as evidenced by CSA certification. They are available in a wide range of sizes and outputs.

Source: Governors America Corp.

SYMBOTICWARE ACQUIRES AI SOFTWARE GROUP PALIFER

Sudbury, Ontario-based data extraction and telemetry management company Symboticware recently announced the acquisition of Palifer, a developer of a deep-learning Natural Language Processing (NLP) AI software that generates data from work orders created in natural language. Palifer's AI will enable Symboticware's customers to reduce unscheduled downtime, prevent unsafe incidents caused by equipment failure and optimize maintenance.

Palifer's software has been validated by various industrial customers, most notably by Deutsche Bahn, the world's second-largest transportation company, and by a leading Canadian mining company.

"Adoption of AI by industrial companies has traditionally been very difficult. This new technology changes the game. Palifer's AI is plug-n-play, can be online in hours and does not require hardware," said Ash Agarwal, CEO, Symboticware. "The product immediately creates value by preventing unscheduled, costly, downtime. The software is already built, tested at live

operations and is ready to be deployed."

Symboticware is active in mining, forestry, agriculture, oil & gas, and construction.

Source: Symboticware

COBOD PARTNERS WITH NIDUS3D FOR DISTRIBUTION OF 3D PRINTING TECHNOLOGY IN CANADA

Danish-based COBOD International recently announced the signature of a distribution agreement with nidus3D in a partnership to bring 3D construction printing technology to Canada and strengthen building automation in North America.

3D printing technology has transformed processes in medical, aerospace, and tool-making fields. Now, that same disruption is being brought to the construction sector, and nidus3D is at the forefront, paving the way for new builds to be achieved faster, more affordably, and with less waste, using COBOD technology.

As a testament to their ambitions, nidus3D has recently succeeded 3D printing Canada's first multi-unit structure in real concrete using COBOD's BOD2, the world's best-selling 3D construction printer. The project is a first-of-its-kind consisting of 4 units each measuring 52 m² and is the first 3D printed home to obtain permission for occupancy in Canada. The 3D printed homes are expected to be available by Summer 2022 for families seeking attainable housing.

"The opportunity to work with COBOD, world leader in 3DCP is incredible," said Ian Arthur, president of nidus3D, based out of Kingston, Ontario. "The BOD2 printer is an industry-leading construction printer that outstrips competitors in its versatility, scope, and durability. nidus3D is actively deploying 3D construction printing technology to lower building costs and expand access to resilient, efficient, and sustainable housing while complying with Canadian building standards."

nidus3D reports to have multiple residential and non-residential buildings lined up for 2022 and 2023, these are subject to announcement at a later stage.

Source: COBOD International

PERMANENT REPAIRS TO COQUIHALLA AND HIGHWAY 1 IN BC

Permanent repairs to flood-damaged sections of the Coquihalla (Highway 5) and Highway 1 will soon be underway,

MINIMIZE PASSES, GUESSWORK, AND HEADACHES.



NEVER IDLE

It's all about doing more with less. So we did, with the widest range of machines equipped with grade management tech to suit your job needs today, and tomorrow. From 2D Laser Control to fully-integrated SmartGrade,™ it allows any operator to grade with precision. Reducing passes, labor costs, and dreaded rework, to boost your bottom line.



JOHNDEERE.CA/SMARTERTOOLS

Available for
**PURCHASE
OR LEASE**

Made for
Canadian
Winters!

THE VERSATILE

Ideal for sidewalk
snow removal

- VTC quick coupler
- Robust construction



450 379-5387
vtcmfg.com
info@vtcmfg.com

protecting the safe movement of people and goods in British Columbia.

“This marks a significant milestone in our recovery from the devastating atmospheric river events of last fall,” said Rob Fleming, Minister of Transportation and Infrastructure. “Following the extraordinary work that was done to reconnect these highways in December, we’re building back permanent infrastructure that will be equipped to better withstand the impacts of climate change and future extreme weather events. I want to extend

my sincere thanks and appreciation to all those who have worked together to help us recover from the unprecedented floods, including the local First Nation communities that continue to work closely with us as we move into this next phase of recovery.”

The contract for development and early construction work on sections of the Coquihalla between Hope and Merritt has been awarded to KEA5, a joint venture between Peter Kiewit & Sons and Emil Anderson Construction.

Work is expected to be substantially

complete this winter. The project will be completed through a collaborative construction model where the owner and contractor work together to complete the design and construction of the project, including sharing risks and incentives.

Good progress is being made on restoring access throughout the Highway 8 corridor. The storms completely washed out 25 sections of this highway, leading to the closure of the highway between Merritt and Spences Bridge.

Highway 5 was closed to regular vehicle traffic on November 14, 2021, due to damage caused by an atmospheric river. Flooding and washouts associated with the rain damaged more than 20 sites along 130 km of the Coquihalla Highway between Hope and Merritt. This included 7 bridges where spans completely collapsed or were heavily damaged.

More than 300 workers using 200 pieces of equipment moved more than 400,000 m³ of gravel, rock and other material to repair and reopen Highway 5 to commercial vehicle traffic on December 20, 2021, and to all traffic on January 19, 2022.

Source: Government of British Columbia

PARTNERSHIP FOR FOUNDATION DRILLING SOLUTIONS AND SERVICES FOR OFFSHORE WIND FARM PROJECTS

Two Italian companies, Saipem S.p.A. and Trevi S.p.A. have signed a Memorandum of Understanding (MoU) to cooperate to jointly develop a design of drilling systems for large diameter foundation holes for wind farms.

The agreement with Trevi will support Saipem’s goal of identifying new and more profitable ways of execution also through designing and developing new technical solutions. This MoU follows a non-binding agreement with Havfram to evaluate a potential cooperation in the offshore wind business.

The agreement with Trevi also covers the possibility to jointly develop such drilling equipment that should then be operated by Saipem, leveraging on Trevi expertise and know-how on foundation, in executing wind farm projects. Efficiently drilling large diameter holes to host foundation piles represents an essential skill to ensure the successful installation of offshore wind farms.

Trevi and Saipem will develop a design that can cope with site specific geotechni-

cal and geophysical data pertaining to the locations to be drilled, to identify the most appropriate drilling strategy and consequently the most appropriate technology.

The Trevi Group has 2 divisions: Trevi, which carries out special foundations and soil consolidation works for large infrastructure projects (subways, dams, ports and docks, bridges, railway and highway lines, industrial and civil buildings) and Soilmec, which designs, manufactures and markets machinery, systems and services for underground engineering. The parent company Trevi – Finanziaria Industriale S.p.A. has been listed on the Milan stock exchange since July 1999.

Saipem is an advanced technological and engineering platform for the design, construction and operation of safe and sustainable complex infrastructure and plants. It is listed on the Milan stock exchange and operates in 70 countries around the world with 32,000 employees from 130 different nationalities.

Source: The Trevi Group

DIVEX MARINE ACQUIRES MOUNT ROYAL/WALSH

Jessy Cantin, president and owner of Divex Marine Inc., recently announced the acquisition of Mount Royal/Walsh Inc., the largest privately-owned ship repair facility in Canada, providing marine repairs and maintenance services.

The goal pursued by Divex Marine Inc. in recent years has always been to become the reference in specialized services in the naval field. The services offered by Mount Royal/Walsh Inc., are complementary and add value to the company by allowing it to expand its service offering to its existing and constantly developing clientele. This close collaboration will be very beneficial and will enhance the services already offered by Divex Marine Inc., such as submerged construction, inspection and maintenance work.

Together, Divex Marine and Mount Royal/Walsh will ensure their leading position in the naval and maritime field, providing their customers with a complete service offering of quality and excellence. Whether the task at hand is underwater or not, the combined strengths of both companies will meet it. Both companies have one priority at heart: the continuity of their business. This cannot be achieved without the core of competent people within their work

force. The Divex Marine team welcomes the Mount Royal/Walsh team!

Source: Divex Marine Inc.

VMAC EARNS GREAT PLACE TO WORK® CERTIFICATION FOR 2022-2023

VMAC has earned the Great Place To Work Canada® Certification for the fourth year in a row, based on the confidential responses from VMAC’s coworkers in a Trust Index® Survey.

For over 30 years, Great Place To Work has proven to be the global authority

in recognizing and certifying high-trust, high-performing organizations. To become Great Place To Work certified, a confidential survey is deployed to the organization’s list of coworkers. The survey requires at least 7 out of 10 coworkers to agree that the organization is a positive work environment. Then a Culture Brief® questionnaire is filled out by management detailing what makes their organization a uniquely great place to work.

“VMAC is our people; we have remained committed to our team through some

Mercedes-Benz eEconic Testing at the Arctic Circle in Finland



Before the impending start of series production in the second half of the year, the battery-electric Mercedes-Benz eEconic proved itself in the Arctic Circle winter test. At icy temperatures down to -25°C, development engineers from Mercedes-Benz Special Trucks tested the e-truck intended for municipal use in Rovaniemi, Finland. Engineers tested the behavior of the batteries and the electric powertrain and associated systems at very low temperatures, among other things. The vehicle’s batteries were charged at various charging stations in order to check compatibility between the vehicle and charging stations.

During testing, developers also tested the practicality of the eEconic with the near-production-level test vehicle using simulated waste collection routes. Vehicles must function reliably even in adverse weather conditions and fulfill their tasks, especially in municipal use. Testing in Finland has shown that the eEconic meets these requirements– with low noise and locally carbon neutral. The eEconic is now ready for the next step: practical testing with customers.

In terms of vehicle architecture, the eEconic benefits from Daimler Truck’s global platform strategy. The low-floor truck is based on the eActros for heavy-duty urban distribution, which went into series production in 2021.

Source: Daimler Truck AG



Eberspaecher Grows in Bulgaria



Eberspaecher recently announced the construction of a new production plant for electrical heaters to be built in Ruse, Bulgaria, by late summer 2023. In taking this step, the automotive supplier is responding to the strong increase in demand in the European market.

The new building will be built on a 80,000 m² plot of land and the production of low-voltage and high-voltage heaters will start by end of 2023. In order to support the high demands of the markets, an interim solution for production will start in Ruse from January 2023 on, until the new building is available.

The products will be used in electric and plug-in hybrid vehicles for the European market. The necessary electronic control units will also be manufactured directly on site. To this end, the Electrical Heaters and Automotive Electronics Business Units within the Eberspaecher Group are working closely together. When production starts, the team in Ruse will have around 150 employees. In the coming years staff will grow up to 500 employees in Ruse.

With the new site, Eberspaecher is purposefully expanding its manufacturing operations for both electrical heaters and automotive electronics. The Electrical Heaters Business Unit grew from Herxheim in Germany (where production started in 1998), with production sites Beijing/Tianjin, in China, and Olawa, in Poland. Eberspaecher has been manufacturing the core technology of the heaters, the PTC ceramics, in Hermsdorf, since 2016. Automotive Electronics has so far produced the electronic control units in Landau, Germany, since 2001, and Tianjin, China, since 2019.

Due to the growing market for battery-electric passenger cars, Eberspaecher expects demand for electrical heaters to rise sharply in the coming years. To date, around 4 million vehicles worldwide are already equipped with Eberspaecher’s high-voltage heaters as well as electronic control units.

Source: Eberspaecher Group

challenging years, and we are seeing the truly positive impact that can have,” explained Tod Gilbert, VMAC’s president. “Our empowered team is constantly and relentlessly improving our products, our customer and supplier relationships, our processes, and in doing so, improving ourselves.”

In addition to being Great Place To Work Certified, VMAC was also recently recognized as a Best Workplace™ in Canada and a Best Workplace™ in Manufacturing. Other recent 2022 achievements include the

Occupation Safety Standard of Excellence (OSSE) Certificate of Recognition (COR) and Canada’s Best Managed Companies Gold Standard designation.

“A great workplace is about the level of trust that co-workers experience in their leaders, their pride in their jobs, and the extent to which they enjoy their colleagues,” said Sim Nesbitt, VMAC’s HR and Special Projects manager. “We can all be proud of how we got here and excited about where VMAC is going.”

The VMAC team is a diverse but uni-

fied group of people who challenge the status quo to deliver innovative mobile air products and technology. VMAC does incredible work, and they are looking for talented, industrious people to join their award-winning team. Individuals interested in joining the VMAC team are encouraged to visit www.vmacair.com/careers/.

Source: VMAC Global Technology Inc.

AWWA LAUNCHES WATER 2050 INITIATIVE

More than 7,700 water professionals gathered in San Antonio, Texas, last June to kick off the American Water Works Association’s Annual Conference and Exposition (ACE22) and seek solutions to both present and future water challenges.

The Opening General Session featured a presentation by Dr. Thomas Zurbuchen, the NASA scientist whose team discovered water on Mars, and the launch of a multi-year AWWA initiative called “Water 2050”, which will envision the future of water and chart a course for sustainability and success.

ACE22, held June 13-15, featured 16 professional learning tracks and 80 sessions, including 26 sessions that were streamed virtually. The exposition showcased more than 360 water technology providers and innovators in more than 900 booths. The event also featured several competitions, including the Best of the Best Water Taste Test, in which regional tap water taste champions compete for the best tasting water in North America; and the Pipe Tapping competition, in which water utility teams race against one another to swiftly drill into a water pipe and deliver water to a tap.

The opening session began with a Water 2050 video titled “The Future We Create”, featuring young water professionals reflecting on the future of water and the challenges ahead. “As members of the water sector, we must continue to evolve and think of innovative ideas and solutions and continue to be advocates for our water resources around the world,” observed



Holly Mettlen, a project engineer with Black & Veatch in South Carolina and one of many young professionals in the video.

A signature element of Water 2050 is a series of 5 intimate think tanks where participants will examine water through the prism of 5 drivers: sustainability, technology, economics, governance and social/demographics. The first of the think tanks is set for September in Las Vegas, Nevada, and focuses on sustainability. Each think tank will generate a report with recommendations for a strong and sustainable water future.

Source: American Water Works Association

METSO OUTOTEC TO DELIVER COMMUNITATION EQUIPMENT TO ARTEMIS GOLD

Metso Outotec has been awarded a contract for the delivery of key crushing and grinding equipment to Artemis Gold’s Blackwater Gold project in British Columbia. The order value, which is confidential, has been booked in Minerals’ Q2/2022 order intake.

Metso Outotec’s scope of delivery consists of the supply of the Superior™ MK-III 4265 primary gyratory crusher, the Nordberg® HP900™ secondary and tertiary cone crushers and 14 MW Premier™ ball mill for the Phase 1 process plant at Blackwater.

“We are pleased to be chosen as the supplier of the state-of-the-art comminution technology for the Blackwater Gold project. This development further solidifies Western Canada as a premier mining region that is continuing to grow. We are ready and proud to support the region’s expansion with our end-to-end offering including services that span across the lifecycle,” said Giuseppe Campanelli, President, North and Central America, Metso Outotec.

Source: Metso Outotec

ALL ERECTION & CRANE RENTAL RECEIVES LONGEVITY AWARD FROM SC&RA

ALL Erection & Crane Rental, a member of the ALL Family of Companies, has been honored with the Longevity Award from the Specialized Carriers & Rigging Association (SC&RA), recognizing its decades of leadership. SC&RA is an international organization with more than 1,350 members from 46 nations serving all aspects of heavy industry including specialized

transportation, lift equipment, machinery moving, maintenance, and more.

SC&RA’s Longevity Awards are presented to member companies for their longtime support and dedication to the association and its mission. ALL was recognized with the 50 Years Award.

ALL has a deep history with SC&RA. Its Dawes branches are among the 7 founding companies that formed the association. More recently, Dawes general manager Steve Freckmann received the association’s Pinnacle Award in 2020 in recognition of his more than decade and a half of involvement in leadership positions within the association.

Firms across the U.S. and around the world submit dozens of entries to the SC&RA Awards competition each year. The awards program recognizes worldwide excellence in the crane, rigging, and specialized transportation industry.

Source: The ALL Family of Companies

MICHAEL C. LIPTAK, CO-FOUNDER OF ALL, DIES AT 91

The principal architect of the heavy lift equipment rental category and driving force behind The ALL Family of Companies

has passed away. Together with his wife, Marvine, and brothers Lawrence and Jake, he founded ALL Erection & Crane Rental in Cleveland, Ohio, with just a single crane in 1964. Through the decades, it grew into the largest privately held crane rental company in North America.

At the time of ALL’s founding, most contractors had to purchase and maintain their own cranes. Mr. Liptak and his inner circle saw a customer need, bought their own crane, and began renting it. In the process, they created a new category – crane rental – and backed it with hard work, reliable products, and outstanding customer service. In doing so, they laid the foundation for a company that would stand the test of time.

Up until his final days, Michael Liptak was still involved in daily life at ALL. He was well known to weigh in business issues, because even if he had handed off the mantle of responsibility, he never stopped carrying the weight of his life work. He pushed those around him to be the best they could be. And he could be that type of leader because there wasn’t a thing he hadn’t done.

Source: The ALL Family of Companies

HIDROSTANK at IFAT Munich 2022

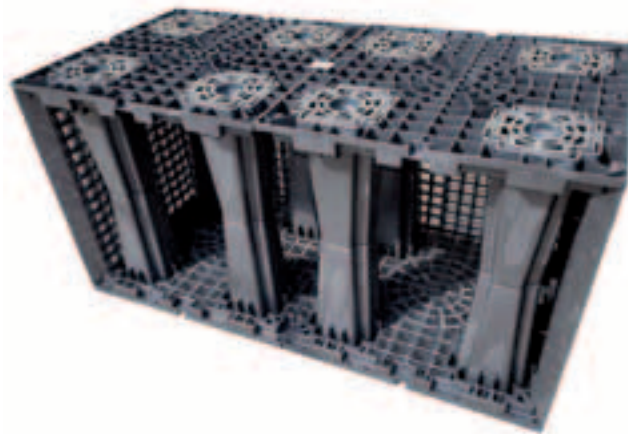
HIDROSTANK presented its wide range of products at IFAT Munich, the World’s Leading Trade Fair for Water, Sewage, Waste and Raw Materials Management, held May 30-June 3 in Munich, Germany.

IFAT is the perfect venue for professionals to see, under one roof, all the equipment, technologies and services specializing in the treatment of all types of pollution, environmental conservation and the implementation of sustainable development solutions.

This year at IFAT Munich, HIDROSTANK presented its new HIDROCRATE infiltration box. With a design based on columns, it has a high resistance to compression and facilitates the assembly compared to previous models.

Since 1996, Spanish manufacturer HIDROSTANK has been working closely with management, engineering, contractors, and installers, to provide innovative solutions for their infrastructure projects in the sewage and stormwater sector of the industry.

Source: HIDROSTANK



Stunning Job in the Swiss Alps

Working where others go on vacation: this is how you could describe this job on an alpine construction. Accompanied by a picturesque mountain panorama, the SENNEBOGEN 613 telescopic crawler crane overcame more than 700 m in altitude with its own travel drive – including steep slopes and narrow mountain roads – in order to be able to take on the lifting work needed for modernizing the snow-making facilities at the mountain lake Lac des Vaux, above Verbier in the canton of Valais, Switzerland.

Over a period of at least 15 years, the 4 Vallées ski area in the southwest of Switzerland is to be further developed and made fit for the future. The snowmaking system in Verbier is considered the heart of the ski area and will be equipped with the latest artificial snow technology as part of this

major project. The modernization work is not only about being able to guarantee snow reliability on the slopes in general,



but also to produce high-quality snow according to the latest environmental standards, i.e. with as little water and energy consumption as possible. For the necessary crane work, the Swiss crane

rental company Consensa Rental AG provided the SENNEBOGEN 613 crawler, which copes excellently with the challeng-



ing construction site environment. The journey to the construction site itself is unusual, as the compact telescopic crane could only be transported by low-loader to the Les Ruinettes gondola station at an

altitude of 2,000 m. From this point on, it was a case of “Self-reliance is the thing!”, and the 613 had to get to Lac des Vaux on its own. The climb took a good 4 hours, in part over mountain roads less than 3 m wide and various ski slopes with gradients of more than 20°, to the summit of Les Attelas at 2,726 m. From here, it was finally possible to approach the construction site at the mountain lake at 2,543 m above sea level.

Once on the jobsite, the telescopic crawler crane with its 18.8 m main boom did all the necessary lifting work around the facilities there. Some of the tasks were executed by operating the machine via radio remote control, allowing the operator to keep an eye on the equipment being lifted in.

The 613 crawler provides support primarily for microtunneling through the lake, because in addition to the pumping station at Lac des Vaux, the connected pipeline network of the snowmaking system is also



to be renewed. The crane supplies the construction site with the drilling pipes and also lifts the 4.5 t microtunneling machine out of the pit every evening. It is also being used for the formwork and concrete work of the completely new built pump station building.

“With such narrow and steep conditions as it is the case at this mountain site, there was virtually no alternative to the

SENNEBOGEN 613 R for the lifging work. The transport or rather the ‘climb’ to the construction site would also have been much more complicated with other cranes. Therefore, the choice quickly fell on the 15 t telescopic crawler crane,” explained Philipp von Dach, product manager at Consensa Rental AG.

Source: SENNEBOGEN

Welcome to the Web. Fuel Lock® Data Hits the Internet!

IntraGrain Technologies recently introduced the new Fuel Lock® Web Dashboard.

Fuel Lock® is a fuel management solution for mid-sized companies and municipalities for whom a traditional cardlock solution may be out of reach. Fuel Lock® is great for any business that runs several pieces of equipment/trucks and has employees that access their company fuel tanks on a regular basis. The system can accommodate up to 300 users and 800 pieces of equipment. It is also possible to link Fuel Lock® at multiple sites to accommodate your needs.

Each employee is assigned a 4-digit pin code which they use to access fuel. When the driver pulls up to the pumps, they simply go over to the Fuel Lock® and enter some critical tracking information based on the preferences of the client. Usually this means their personal pin number, fuel type, piece of equipment and the odometer reading or hours. The Fuel Lock® will then unlock for a specific amount of time set by the administrator, anything from 5 to 60 minutes. The Fuel Lock® will generate

an Excel report daily, weekly, or monthly automatically depending on the company’s preferences.

Fuel Lock® now has both an app and web version. Until now, any information or data entry into the Fuel Lock® system needed to be done through a free android or iOS app. This could be difficult if the team in the office does not have a company cell phone. The newly released web version now allows an administrator to access the Fuel Lock® information from the comfort of their desk, while still allowing a manager to receive tamper alerts and notifications on their mobile device. The web desktop also has several features that are not currently available on the app such as the ability to be managed



by several people within an organization, a detailed dashboard that can be filtered by day week or month, the ability to switch between dark and light mode, and more prominent recent transaction display.

The new Fuel Lock® Web Dashboard brings fuel management in from the cold!

The company is currently recruiting new dealers in Ontario, Quebec, and Eastern Canada.

Source: Auxilia Ventures

Hiab Receives Significant Repeat Order for MOFFETT Truck-Mounted Forklifts

Hiab, part of Cargotec, has received a significant repeat order for MOFFETT M8 55 NX truck-mounted forklifts in the U.S. The €16.8 million (\$22.1 million) order was made by one of the country’s largest building materials supply companies that also placed a significant order with Hiab in Q1 2022. This order was booked in Cargotec’s 2022 Q2 order intake and the units are scheduled to be delivered in Q1 2023.

“Our customer’s focus on the consumer and professional contractor segments, and the development of new, efficient delivery models are increasing the demand for delivery capacity and fleet requirements. We are very proud that the reliability of MOFFETT has been a crucial part of the company’s success in a competitive industry. The order is a statement of the continued trust and long-term partnership with Hiab,” said Jani Koskinen, senior manager, Strategic Accounts, Hiab.

“We can now deliver MOFFETT truck-mounted forklifts that are fully assembled in the U.S. at our Streetsboro, Ohio, facility.

Soon, we will also introduce the eSeries in the U.S. that offers the same performance without any emissions,” added Jann Hansen, vice president, Sales & Product Management, Truck Mounted Forklifts, Hiab.

The truck-mounted forklift model ordered is the M8 55 NX with a moving mast and a lifting capacity of 2,500 kg, some units will be delivered with 4-way steering for negotiating tight access areas with long loads. The MOFFETT M8 55 NX can transfer heavy loads quickly and safely, even across challenging terrain. While it is incredibly powerful, it is still compact enough to be carried on a wide variety of truck and trailer classes. All MOFFETT



truck-mounted forklifts are compliant with Tier 4 emission standards in the U.S. and Canada and European Stage V regulations.

All MOFFETT M8 NXs are delivered with connectivity enabled and premium access to HiConnect™ for 2 years. HiConnect Premium provides real-time insights into equipment utilization, operation, and condition that can be used to optimize performance, safety and avoid unnecessary downtime.

Source: Cargotec

A Revolution at EDDYNET!

EDDYNET introduces its new REVV™ high revolution angle sweeper especially designed for regional airport runways and international airport taxiways. This new sweeper comes with a 914 mm (36") diameter broom. Two choices of brushes are offered: the SnowPro™ professional version wafers, or the cassette strip broom.



Both types are rated for up to 1,000 rpm and are available with zinc-plated wire or polypropylene bristles. The REVV™ sweepers are available in lengths of 3.65 m, 4.26 m, 4.87 m,



5.48 m (12', 14', 16' and 18'). As with all EDDYNET's sweepers, a wireless remote is available, allowing multi-vehicle interchangeability without the need of wiring each vehicle. The REVV™ can be fitted to multiple equipment such as wheel or backhoe loaders. The bolt-on quick connect attachment system can be equipped with any hook type. Airport safety requires heavy-duty reliable equipment; the REVV™ sweepers are made in Canada with high quality

components only, all steel welded body and parts are individually powder coated prior to assembly. The double wheel axles ensure the correct down pressure of the brushes for maximum cutting effect and life cycle. All REVV™ sweepers come with hydraulic front deflector, 2 broom core integrated hydraulic motor, 2 high force vibrators for de-icing, wireless or wired remote control (12 or 24 VDC). Source: EDDYNET Inc.

EDDYNET EDDYNETINC.COM • 1-866-444-2802

Winter Is Coming Are You Ready?

GRYB.COM

gryb.com - quotes@gryb.com - 819-604-1396

Hyundai Enters the Articulated Dump Truck Market

Hyundai Construction Equipment Americas recently announced it is entering the articulated dump truck (ADT) market with 2 new models – the HA30 and the HA45 – targeting the popular 30- and 45-ton segments. The first of the new ADTs are now available for order through Hyundai's North American network of authorized dealers.

The HA30 has a 16.8 m³ heaped body capacity, that rises to 17.8 m³ when fitted with a tailgate. The larger HA45 offers a 24.4 m³ heaped capacity, rising to 26 m³ with a tailgate. With rated payloads of 28 and 41 t respectively, the HA30 and the HA45 articulated dump trucks provide an ideal haul truck match for Hyundai's larger crawler excavators and wheeled loaders. Designed primarily for high-volume earthmoving projects, highway construction, and mine and quarry operations, Hyundai's articulated haulers provide maximum drive and traction in the worst site conditions, maintaining year-round productivity for the customer.

"Hyundai is excited to enter the ADT market to better serve our customers in aggregates and infrastructure construction," said Mike Ross, senior vice president of CE Sales, Parts & Service, Hyundai Construction Equipment Americas. "Our new ADT models are the first collaborative results of the combined design, engineering, and manufacturing expertise of Hyundai Construction Equipment and Hyundai Doosan Infracore." Hyundai Heavy Industries Group in 2021 purchased the Doosan business, which now operates – along with Hyundai Construction Equipment – as a separate division within Hyundai Genuine. While maintaining their respective management and dealer network structures, the 2 divisions plan further integration in R&D, design, engineering, procurement and manufacturing. The new Hyundai HA30 and HA45 trucks are built around a full-time 6-wheel drive concept, with front and rear limited slip differentials and a longitudinal differential that can be manually locked, for maximum drive and traction on difficult terrain. The trucks have a compact chassis design, to aid maneuverability, with a



sloping rear frame and a front-mounted differential integrated into the ZF transmission, allowing for a shorter front frame section. This results in the smallest turning radius in the vehicle class and outstanding stability. Both trucks are powered by Tier 4 final (T4f) Scania turbocharged diesel engines and drive through 8-speed ZF automatic transmissions. The torque converter has lock-up in all gears, reducing fuel

consumption and increasing efficiency. Hyundai's Hi-Mate telematic monitoring system is standard. Source: Hyundai Construction Equipment Americas, Inc.



Designed to mount on a wide variety of machines in various applications, CWS by Paladin is your tire handling solution

Robust Design

Safe and Versatile

2,500-18,200 kg Max. Capacity

Mounts on any Machine

Contact Shawn Regan for more info
shawn.regan@sbdinc.com
Phone: 514-264-1456
Stanley Infrastructure | Paladin Attachments

Cropac Equipment Expands Potain Top-Slewing Crane Offering into Western Canada

Potain has expanded its top-slewing sales and services further into Western Canada through its authorized dealer



Cropac Equipment. The new agreement adds to Cropac's existing product offering in the region, where it represents Potain's self-erecting tower cranes. Cropac is headquartered in Oakville, Ontario.

"Cropac is proud to expand our Potain distribution to offer top-slewing cranes and service in the western part of the country,"



said Bill Finkle, Cropac's president. "We look forward to a productive partnership and to be able to service our customers across Canada with Potain's exceptional range of products."

Cropac has been a Potain self-erecting dealer in Eastern Canada for over 17 years and has played a key role in developing and growing the self-erecting cranes market in the country, said Daiane Quinlan, Potain's North America sales director.

"We are excited to expand our partnership with Cropac to include the top-slewing tower crane product line in the British Columbia, Alberta, and Saskatchewan provinces," she said. "The partnership with Bill and team strengthens our commitment to provide the best tower cranes in the market with the best local product support for our Canadian customers."

Source: The Manitowoc Company, Inc.

Warning Light Kit Delivers Powerful Safety Lighting for Commercial Trucks and Emergency Vehicles

Wolo Manufacturing Corp. recently introduced the Wolo 8000 Series LED Warning Light Kit, the latest addition to their industry-proven line of warning lights. The 8000 Series is designed for grill and surface mount applications on vehicles that require front warning lighting and offers high visibility in bright sun, dense fog, and rain. The new warning light series is available in a choice of amber, blue, or red lighting and comes as a complete kit with 2, super-bright linear LED clusters.

Designed to provide a simple application, it includes all the necessary components for installation. The kit features plug-and-play, waterproof connections for long lifetime, switch control, wiring, mounting brackets, and hardware. The lights are operated by the switch control, which can be mounted to the dashboard or console to turn the LEDs on and off, and toggle between 26 different light patterns.

The Wolo 8000-A is pre-wired to accept



additional lighting and can be expanded from 2 to 4 LEDs with the Wolo LED Grill and Surface Mount Expansion Pack, 8050-A. Whether the operator is using 2 or 4 LED clusters, the system comes factory-wired so the clusters will be synchronized.

The Wolo 8000 Series meets or exceeds SAE J595 and is IP67 rated. The LEDs have an operating lifetime of 50,000 hours and

the housings are made from aluminum. Wolo Manufacturing Corp., provides innovative products to protect and keep people safer. A leader in horn design and technology, Wolo also offers emergency and safety warning lights and alarms for cars, trucks, marine, industrial equipment, and emergency vehicles.

Source: Wolo Manufacturing Corp.

Coming up in the Next Issues!

September	cranes, aerial work platforms and material handling... deadline August 20	March	new products that are expected to be introduced during 2023... deadline February 15
October	collection and valorization of residual materials and recycling... deadline September 25	April	rental and compact equipment... deadline March 20
November	landscaping and compact equipment... deadline October 30	May	public works and road maintenance... deadline April 30
December/January	concrete and demolition... deadline November 30	June/July	les composants mécaniques, les moteurs et les trains de roulement... deadline May 30
February	earthmoving and road building... deadline January 15	August	snow removal equipment, winter maintenance... deadline July 15

InfraStructures

reaches more users of heavy machinery and specialized equipment than any other publication in Canada.

The media kit is available on www.infrastructures.com

Reserve your advertising space now!

Call 416-795-1295



We're getting ready for our Annual **Waste & Recycling Issue** that will be published in October.

Send us your ads or news releases to be featured in the October issue of **InfraStructures**

Advertise your products and services in Canada's Equipment Magazine! The complete media kit is available online at www.infrastructures.com

Deadline is September 20, 2022!
Info: 416-795-1295

IPAF Promoting the safe and effective use of powered access worldwide

DON'T FALL FOR IT!

SAFETY STARTS WITH YOU

Since IPAF began analyzing accident data in 2012, falls from the platform have been the most common cause of injury and death when using mobile elevating work platforms (MEWPs).

From 2012 to 2022, there were 239 reports of falls from the platform in 20 countries, resulting in 132 deaths.

IPAF's Don't Fall For It! safety campaign identifies key causes of falls from the platform, and provides advice about how to avoid associated hazards.

www.ipaf.org/safe

bauma 2022 Preview

The 2022 edition of bauma will be held from October 24-30, in Munich, Germany

WIRTGEN GROUP

At this year's bauma, Kleemann will present innovations from its comprehensive product portfolio with a total of 9 mobile crushing and screening plants and its operating concept SPECTIVE. A world premiere is celebrated by the MOBIREX MR 130(i) PRO impact crusher, a new member of the PRO line family.



The new MOBISCREEN MSS 802(i) EVO has been designed as a powerful mobile screen for coarse elements for changing challenges in different applications. With its clever plant design and flexible conversion options, it guarantees an optimum material flow in natural stone and recycling applications.



bauma 2022 will be the world premiere for Vögele's first road pavers and screeds of the new Dash 5 generation: the SUPER 1900-5(i) and SUPER 2100-5(i) Highway Class pavers and the latest-generation AB 500 and AB 600 Extending Screeds.

These new products look further into the future than ever before. Benninghoven burners enable reliable use of renewable and therefore sustainable energy sources. Many markets are phasing out coal as a fuel, while systems running on oil are subject to increasingly more stringent regulations and restrictions. With Benninghoven technologies, plant owners can be sustainable and secure the future of their plant site. EVO JET multi-fuel burners, which can use renewable fuels such as biomass to liquid (BtL) and wood dust, contribute to this. Both have a carbon neutral footprint.

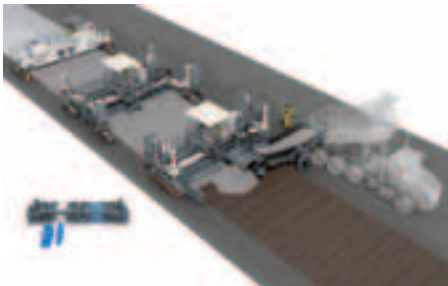


Electrified tandem rollers, hybrid solutions and ECO mode. For many years, Hamm has been developing fuel-efficient machine technology in order to achieve an efficient and, in turn, resource-conserving workflow on the construction site. One milestone included the Power Hybrid roller from the HD+ series.



With 8 electrified tandem rollers, Hamm is now entering the segment for fully electrical construction machines. Wirtgen Slipform Pavers Bring Nume-

rous Innovations and a world premiere to bauma 2022. Apart from the SP 15(i) and SP 20(i) offset pavers, Wirtgen will be showing a complete paving train for fully-reinforced concrete paving. This comprises a WPS 102(i) placer/spreader, an SP 94(i) inset paver, and a TCM 180(i) texture curing machine. Also making an appearance at the show is an SP 124(i) with a new, integrated dowel bar inserter. All compatible machines at the show will also feature Wirtgen's own, specially developed, AutoPilot 2.0 control system for stringless paving.



YANMAR

Yanmar will introduce its electrification strategy for off-road vehicles and equipment at bauma 2022. Its stand will showcase its off-road product portfolio, commitment to customer lifecycle value and future vision for industrial equipment.



MANITOWOC

Manitowoc is gearing up for a major display of its latest cranes, technologies,

and services at bauma 2022, in Munich, Germany. The company will showcase a dozen cranes from Grove and Potain, and will highlight its expanded range of support solutions that cover monitoring, parts, service, rental, remanufacturing, finance, and more.



The new technologies shown will include CONNECT, an advanced telematics platform that is being unveiled at the exhibition.

VOLVO PENTA

While its purpose-built electric driveline will take center stage, Volvo Penta will use its presence at bauma 2022 to focus on the



role of its market-leading diesel engines in the construction and mining industries, as well as the company's transformation into new sustainable technologies.

Volvo Penta's commitment to supporting the future needs – as well as the current demands – of mining and construction customers will be in sharp focus when the company returns to bauma in October.

Showcasing its plans to provide future sustainable power solutions to meet the industry's net-zero ambitions, the company's display will provide an overview of how its current portfolio of ultra-efficient

D5 to D16 diesel engines – and Stage V models in particular – has resulted in technological advances and market share gains that support its transformation journey.

WACKER NEUSON

Wacker Neuson and Kramer will be welcoming their guests at bauma 2022 on a 5,000 m² stand in the North open-air site. The 2 brands will be presenting their solutions in 3 categories: *Meet Green*, *Meet Connectivity*, and *Meet Innovation*.



Under *Meet Green*, the brands will be presenting their zero-emission range, which will be expanded at bauma to include a number of machines and services. In the *Meet Connectivity* area, visitors will learn how construction machinery and equipment are becoming increasingly digital, bringing customers real benefits in terms of efficiency and transparency. And in the *Meet Innovation* section, visitors will experience how the Wacker Neuson Group brands have reinvented themselves time and again throughout their nearly 175 years of company history – and continue to do so, as innovation is part of the company's DNA.

BAUER MASCHINEN GROUP

At bauma 2022, alongside the core area of Bauer drilling rigs, duty-cycle cranes from the MC series and diaphragm wall equipment, the exhibits will also include devices and equipment from the subsidiaries Klemm, RTG and Bauer MAT.

Bauer will present a small selection of the various possible applications and equipment lines, with a total of 4 large rotary drilling rigs.

In the area of multi-function equipment, the BG 45 and BG 23 H will offer a small glimpse into the range of applications, kinematic systems and base carriers available.



SENNEBOGEN

At bauma 2022, SENNEBOGEN will bring its largest material handler ever exhibited: the 885G. The handling giant for port operations impresses with an operating weight of more than 300 t and a reach of up to 38 m.

With the new port material handler, SENNEBOGEN is adding another large-scale material handler to its portfolio. The 885G fits perfectly into the gap between the existing 875E and the world's largest material handler 895E and thus also takes into account the growing ship sizes – especially in inland ports. Thanks to the variety of equipment typical of SENNEBOGEN, the machine can also handle heavy container lifts as well as crane lifts up to 50 t.



InfraStructures

reaches more heavy machinery and specialized equipment users in print and online than any other trade magazine in Canada.

The Media Kit is available on InfraStructures' website at www.infrastructures.com



InfraStructures

reaches more heavy machinery and specialized equipment users than any other trade magazine in Canada.

The Media Kit is available on InfraStructures' website at www.infrastructures.com



Continental Presents Itself as a Full-Liner for the Port Business at TOC Europe 2022

The world’s ports are central trans-shipment hubs for global flows of goods. Crises such as COVID-19 and supply chains disruptions are creating a tense market situation. Increasing demand and port congestion is leading to greater utilization of port vehicles, resulting in new challenges for port operators. Continental’s product and service portfolio aims to effectively support the expansion and intelligent networking of international port logistics. With a comprehensive range of tires and intelligent tire management solutions, Continental offers solutions for individual requirements. Continental tires used in daily port operations are characterized by safety, optimized performance, positive environmental effects and significant cost-lowering potential.

After a 2-year break due to the pandemic, the technology company presented itself at TOC Europe in Rotterdam under



the motto “Movementum”. TOC Europe took place from June 14-16 in Rotterdam, Netherlands.

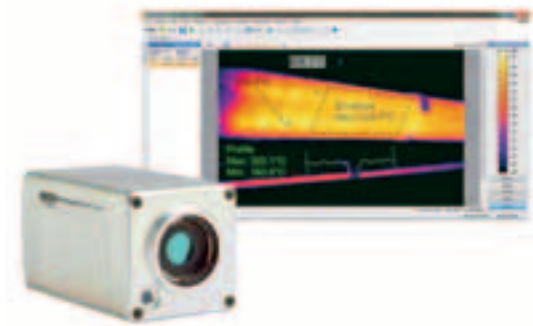
With the launch of the 2019 radial tire portfolio, Continental has completed its product range for port applications. It has also gained extensive experience in the

market over the past years. These tires have been specially designed for demanding load & carry applications.

“This product expansion makes Continental unique in that radial, bias and solid tires can be supplied, enabling it to equip the entire fleet in the port. Our technical

Designed for the Most Challenging Environmental Conditions You Face

The Fluke Process ThermoView Critical Asset Monitoring System is designed for remote monitoring of indoor or outdoor industrial environments. The ThermoView TV40 thermal imagers offer a resolution of either 320x240 or 640x480 pixel and wide-angle lenses.



The accessory is used with the ThermoView Critical Asset Monitoring Software. It was designed to protect your thermal imager from dust and water, even in the most demanding manufacturing environments.

Source: ITM Instruments Inc.

Philips MasterDuty Lighting Delivers Long-lasting Performance

Philips MasterDuty headlight bulbs, from Lumileds, are the latest innovation in forward lighting for commercial vehicles.

Built to deliver exceptional and long-lasting lighting performance on Class 2-8 commercial vehicles, Philips MasterDuty lamps are designed to provide the ultimate protection against mechanical shock and easily handle the extreme stress and vibration of rough terrain and damaged roadways.

Philips MasterDuty lamps are the toughest available for the medium- and heavy-duty truck market. Built to resist up to 13G, the bulbs’ key benefit is their exceptional vibration resistance. Philips MasterDuty bulbs have been engineered to withstand a wide range of vibration frequencies and feature a high-performance glass construction that easily handles extreme temperature and pressure changes.

The Philips MasterDuty headlight range includes 7 new SKUs for exceptional coverage on medium- and heavy-duty applications: H1MDC1, H7MDC1, H11MDC1, 9003MDC1, 9005MDC1, 9006MDC1, and 9008MDC1 forward lighting applications.

Source: Lumileds



customer service is in close contact with fleet managers to ensure that the tires are optimally suited to the applications of the terminal vehicles. Whether it’s for pick & stack or load & carry needs,” said Julian Alexander, Product Line manager at Continental Commercial Specialty Tires for port applications.

All Continental radial tires for port vehicles are equipped with a sensor ex works, making them ready for use with Continental’s own ContiConnect tire management system. The update of the digital tire monitoring system ContiConnect 2.0 provides the port industry with a new version for the holistic, digital tire management of the future. ContiConnect 2.0 increases safety and enables maximum cost transparency.

“Terminal operators and fleet managers benefit from fewer vehicle breakdowns, lower maintenance costs and higher mileage,” added Mr. Alexander.

In addition to ContiConnect’s previous functions, the new version offers fleet customers the option to track their tires as an asset, to monitor tires via Bluetooth devices in a more convenient way and tapping into predictive maintenance. The fleet manager in port operations has a quick and convenient overview of the entire fleet – regardless of the location of the vehicles. The platform and system update is expected to be rolled out globally during the second half 2022.

Founded in 1871, Continental offers safe, efficient, intelligent and affordable solutions for vehicles, machines, traffic and transportation. In 2021, Continental generated sales of €33.8 billion (\$45.2 billion) and currently employs more than 190,000 people in 58 countries and markets. On October 8, 2021, the company celebrated its 150th anniversary.

The Tires group sector has 24 production and development locations worldwide. Continental is one of the leading tire manufacturers with more than 57,000 employees and posted sales of €11.8 billion (\$15.8 billion) in 2021. The portfolio of the tire business includes services for the tire trade and fleet applications, as well as digital management systems for tires.

Source: Continental Tires

Online Transmission Selector

Eaton Cummins Automated Transmission Technologies recently announced it has a new online selector tool, which helps users choose the optimal transmission from its portfolio.

“Small to midsize fleets and dealership salespeople will benefit from the online selector,” said Michael Garrison, lead applications engineer, Eaton’s Vehicle Group. “The tool eliminates much of the guesswork when it comes to selecting the ideal transmission that best fits the user’s needs based on their particular requirements.”

To guide customers to the ideal transmission choice, the online selector asks a series of questions, such as how the vehicle is used, its maximum gross weight rating, the type of terrain on which it will operate, and whether it will be used with a power takeoff (PTO) unit.

Based on the responses, the tool provides 2 transmission recommendations and a suggested axle ratio range.

Users can register for an account, which allows them to save their specifications, and generate a downloadable PDF file for reference and/or dealership consultation. Help is always available via a link on the tool homepage if the user requires assistance with definitions or examples. If the user has questions on transmission specifications, they are directed to a Roadranger representative.

Source: Eaton Cummins Automated Transmission Technologies



Environmentally Acceptable Lubricants Approved by Bosch Rexroth

PANOLIN HLP SYNTH is a fully synthetic, high-performance, readily biodegradable, zinc-free and environmentally considerate hydraulic fluid, based on synthetic esters and made with special additive technology. This impressive lubricant has been approved by many OEMs and for many applications across the world.

PANOLIN HLP SYNTH 32 & 48 are still exclusively listed on the Bosch Rexroth Fluid Rating List 90245. These are still the only 2 environmentally acceptable hydraulic fluids that passed the extremely tough testing procedures to be awarded with the approval.

In 2017 PANOLIN was the first lubricant manufacturer to have an environmentally friendly product, namely PANOLIN HLP SYNTH 32 with a favorable rating by Bosch Rexroth AG and to fulfill all the requirements for listing on the BOSCH Rexroth Fluid Rating List 90245.

Back in 2017, Patrick Lämmle, chairman of the board of directors of PANOLIN International Inc., stated that the requirements to pass the neutral evaluation procedure designed by Bosch Rexroth are amongst the toughest in the market. PANOLIN therefore states with good reason that they are leading manufacturers of high performance environmentally acceptable hydraulic fluids.

Alongside the exclusive Bosch Rexroth approval, HLP SYNTH has decades of OEM approvals achieved across both onshore and offshore applications.

Source: Panolin



IFAT Munich 2022: A Strong Restart for Climate Protection

Be it plastics, building materials or water: sustainable resource management solutions are essential for environmental and climate protection – and can be found at IFAT Munich. The world’s leading trade fair for water, sewage, waste and raw materials management took place from May 30-June 3, 2022. A total of 2,984 exhibitors and around 119,000 visitors confirmed the fair as the most important platform for environmental technologies.

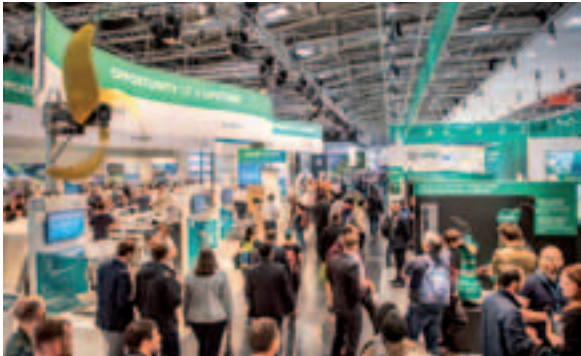
“A huge exhibition, concentrated knowledge transfer, networking – IFAT Munich 2022 served as pure inspiration and drives the sustainable transformation of industries and climate-resilient communities,”

said Stefan Rummel, managing director of Messe München.

“The show has approached pre-coronavirus levels – reflecting the great potential of environmental technologies

sive. It’s great to see IFAT making such a strong restart, as it is a very important, sustainable driver for circular economy and the environmental industry.”

IFAT Munich covered a total of



and confirming its position as the world’s leading platform for water, sewage, waste and raw materials management,” added Dr. Johannes F. Kirchhoff, chairman of the IFAT Munich Advisory Board. “The high international attendance at the trade show during this challenging time was impres-

260,000 m², occupying all 18 halls and a large part of Messe München’s outdoor area. Exhibitors came from 59 countries and regions and visitors from 155 countries traveled to Munich. In comparison with the previous event, especially the strong participation from China and Russia was

Emotions High as JCB Machines Join Pageant Fit for a Queen

JCB machines from landmark years of Her Majesty the Queen’s 70-year reign took center stage at the spectacular Platinum Jubilee Pageant in London, England.

The 5 diggers paraded down The Mall towards Buckingham Palace past members of the Royal Family and a large crowd of cheering spectators who were lining the route.

Later, the team of operators driving the JCB machines spoke of their pride and emotion at being involved in the tribute to The Queen as they drove machines manufactured in The Queen’s jubilee years of 1977, 2002, 2012 and 2022 – and one made in her coronation year 1953.

JCB Backhoe Loader Product Marketing manager Julian Carder, of Uttoxeter, was driving a 1977 JCB backhoe from the year of the Queen’s Silver Jubilee – a machine he restored to its former glory in 2012.

JCB Test Site operator Georgina Williams, of Derby, brought the parade of JCB backhoes right up to date as she drove a 2022 model powered by hydrogen. The



machine is currently being developed by the Staffordshire-based company as it explores the potential of hydrogen as a zero CO2 alternative to fossil fuels.

“The highlight for me came when we drove through Admiralty Arch and took in the scene in front of us – the flags in The Mall and the tens of thousands of people waving and cheering. It was simply amaz-

ing and a once in a lifetime experience,” she said.

Leading the parade was one of the first backhoe loaders ever built by JCB in 1953 – the year of Her Majesty’s Coronation – driven by Andy McLeod, of ABM Plant Hire, of Derby. JCB demonstrator Dan Potter, of Rocester, was driving another iconic JCB 3CX backhoe from 2012 – the year of the

missing. There were 15 international joint pavilions from Europe as well as Japan, Canada, South Korea and the U.S.

“IFAT has not lost its attractiveness for the circular economy branch and, in the future, will continue to uphold its importance as the world’s leading trade fair for the sector,” explained Max Köttgen, member of the management board at REMONDIS.

“I am very impressed with the size of the show, the number of visitors and the unparalleled expert platform, and I am delighted that we could have a number of relevant discussions with customers and partners,” said Anja Eimer, head of Water & Waste Water at Siemens.

“The trade show is the most important international fair to reflect industry trends based on our sustainable product and service innovations,” said Ottmar Steinebrunner, managing director Sales & Service Europe and Americas at Bucher Municipal

Source: Messe München

The Half-Track Fox Is Up and Running Again



The Classic Vehicles department of Volkswagen Commercial Vehicles (VWCV) has just finished bringing a unique 60-year-old vehicle back to mint condition. The “Half-track Fox” was based on a T1 van produced in the Hannover, Germany, plant in May 1962 and then sent off to its purchaser in Austria. It was then transformed by Kurt Kretzner, a resourceful Viennese mechanic, into a 4 axles all terrain vehicle.

Two units, it seems, were built in the period up to 1968. At least one example survived. The orange-painted Bulli body has, at the front, a steered double axle with dual rough-tread 14” tires and, at the back, another double axle with chain drive. The tracks were mounted on 13” wheels and a construction of his own design made of aluminium elements with rubber blocks to spare the asphalt. As a result of the dual front-axle steering the turning circle was less than 10 m. An automatic limited-slip differential ensured evenly distributed forward propulsion even in deep snow.

The T1 drew its power for this from its standard 1,192 cm³ engine producing 34 hp. Source: Volkswagen Commercial Vehicles

Reclamation Works at Hong Kong International Airport

TREVI Construction Co. Ltd, a company part of TREVI Group, is working on the important project of the Hong Kong International Airport Three Runway System Project (TCHK).

To strengthen Hong Kong’s status as an international aviation hub, and to cater for the city’s long-term air traffic demand, Hong Kong International Airport is developing into a 3-runway system. The scale of the project is almost equal to building a new airport next to the existing one. It involves reclaiming approximately 650 ha of land north of the existing airport island, building the Third Runway Passenger Building and an associated apron, building a new, 3,800 m-long runway and associated airport support infrastructure.

In this project, TREVI Construction Co. Ltd is working with ZHEC-CCCC-CDC Joint Venture, the contractor appointed to undertake the main reclamation works.

Source: TREVI - Finanziaria Industriale S.p.A.



Appointments

IROCK Crushers is pleased to welcome **Brad Freeman** to the position of regional sales manager for the Central U.S. region.

Mr. Freeman joins IROCK with well over a decade of industry experience. The role encompasses day-to-day sales management as well as accountability for the overall growth of IROCK's presence. He will continue, and build upon, IROCK's ongoing sustainable sales growth through distributor relationships to represent the IROCK mobile crushing, screening, and conveying product lines.

Most recently, Brad Freeman held the position of regional sales manager for Astec Industries. Among his many responsibilities, he managed all outside sales efforts, development, and product promotions alongside dealers in the South/Central region of the U.S. Before this, Mr. Freeman worked as a designer/drafter, then as a sales application specialist, with Johnson Crushers International (an Astec Industries Company).

Source: IROCK Crushers



ence in manufacturing will make him a valuable asset to Allison and our Board."

Prior to joining ADS, Scott Barbour held several leadership positions at Emerson Electric Co., a global technology and engineering company that provides solutions for customers in industrial, residential and commercial markets. He earned a Bachelor of Science in Mechanical Engineering from Southern Methodist University and a Master of Business Administration from the Owen Graduate School of Management, Vanderbilt University.

Source: Allison Transmission

Proterra Inc. recently announced the appointment of **Jan Hauser** to the company's board of directors.

An experienced director and global finance leader, Ms. Hauser is a retired partner of multi-national professional services firm PricewaterhouseCoopers (PwC) and recently served as vice president and CAO at GE from 2013 to 2018, where she led a team of more than 3,000 controllership professionals.



With Jan Hauser's appointment, 5 of Proterra's 10 directors are women. Women on Proterra's board serve in leadership positions, with women chairing each of the board's standing committees and serving as the Lead Independent director.

"Jan is an accomplished financial services leader whose broad skill set and talents will help us drive greater impact as we continue to scale and deliver best-in-class EV technology solutions to serve the commercial vehicle market," said Jack Allen, chairman of Proterra's board of directors. "The diversity of our directors strengthens our company and we're excited to welcome Jan's unique leadership background to our board."

"Proterra is transforming transportation with innovative EV technologies that are helping to clean our air and preserve our environment. I'm delighted to join Proterra's board at this exciting moment in the company's history and I look forward to working with the team as it continues to scale its impact and work," said Jan Hauser.

Source: Proterra Inc.

Allison Transmission recently announced that **D. Scott Barbour** has joined its board of directors following a successful election at the 2022 annual meeting of stockholders.

Mr. Barbour serves as the CEO and president of Advanced Drainage Systems, Inc. (ADS), a manufacturer of water management solutions in the stormwater and on-site septic wastewater industries, a position he has held since September 2017.

"We are pleased to welcome Scott as the newest member of Allison's esteemed board of directors," said David S. Graziosi, chairman and CEO, Allison Transmission. "As the commercial vehicle industry evolves, we remain committed to manufacturing leading propulsion solutions that Improve the Way the World Works. Scott's strong leadership along with his extensive experi-



Advertise from **\$75** plus tax

Reach more equipment users than with any other trade magazine in Canada!



Used BUCHER Optifant 70 sweeper, on 2008 GMC truck chassis, Stock 405914 Price: P.O.R.

Accessories Machinery Ltd
Phone: 1-800-461-1979



Used 2016 BUCHER CityCat 5006XL compact sweeper, 2,856 hours, Stock SN7148 Price: P.O.R.

Accessories Machinery Ltd
Phone: 1-800-461-1979

QUÉBEC - ONTARIO - USA

INSTA-MI

866 514 643-4649

INSTA-MIX.COM



KM INTERNATIONAL



KM 8000T - 4 TON ASPHALT HOTBOX TRAILER

The KM 8000T is a 4-ton, trailer-mounted asphalt hotbox reclaimer capable of maintaining asphalt temperatures for up to 3 days, and it can reclaim excess or bulk-stored hotmix asphalt. The KM 8000T asphalt hotbox trailer is the perfect unit for larger repairs such as saw cuts, skin patching, and utility cut repairs.

FEATURES:

- Triple Wall Construction with high efficiency insulation
- Temperature Control: Thermostatically controlled heating system for better fuel efficiency
- Cost Savings: Maintain HMA for up to 48 hours or Reclaim bulk stored virgin HMA
- Ease of Use: Front to back loading doors with cantilevered handles
- Diesel or Propane Fired (2 30Lb. Propane Cylinders included with Propane units)



LB 2-16: PORTABLE INFRARED ASPHALT HEATER

The LB 2-16 is entry level infrared unit equipped with a total of 16 Sq. Ft of infrared heating area. The LB 2-16 is ideal for smaller pothole repair, or oil spots.

FEATURES:

- Unique folding design for easy transportation and use
- Safety: Automatic Pilot Ignition
- Efficient: Heat Cycling technology
- Versatile: 2 Independently controlled zones
- Value Added: (2) 30LB. propane cylinders included

ETHALER

BE READY FOR THE WINTER SEASON FOR SALE & LONG- TERM RENTAL FOR SNOW REMOVAL



LOADER 3448L
48 HP

FINANCING AVAILABLE - *Conditions may apply. Subject to credit approval.

**CONTACT OUR
REPRESENTATIVES**

BOBBY MORMINA
East (QC) and Ottawa (ON) sector
Cell.: 514 863-4649
bobby@insta-mix.com

STEPHAN ASTON
West (QC) and North (QC) sector
Cell.: 514 816-4049
stephan@insta-mix.com

ALEX FORREST
Toronto (ON)
Cell.: 905 807-1649
alex.forrest@insta-mix.com

SAMI

- Galvanized top loading spreaders
- SLH self-loading spreaders
- SLF self-loading spreaders
- Towed-behind ground-driven spreaders



SINCE 1952

EASTERN FARM MACHINERY LIMITED

www.easternfarmmachinery.com

RR3, 10 Nicholas Beaver Rd, Puslinch ON N0B 2J0
Phone: 519-763-2400 • Fax: 519-763-3930

FUEL LOCK®

SECURE IT. VIEW IT. TRACK IT.

BROUGHT TO YOU BY **AUXILIA VENTURES**

519.742.5381
tracy@auxiliaventures.ca
www.auxiliaventures.ca

InfraStructures

Canada's Equipment Magazine • La revue de l'équipement au Canada

Find us on Facebook



InfraStructures magazine

<https://www.facebook.com/InfraStructuresMagazine/>

Address Change

Fill out the coupon and send it to us by mail at:

InfraStructures Magazine
Subscription Department
4330 Saint-Hubert Street
Montreal, QC H2J 2W7

by e-mail at
subscriptions@infrastructures.com

.....send the changes to us by mail or by fax or type-in the information in an e-mail.....✂

Old Address (as on label):

Name: _____

Company: _____

Mailing address: _____

Province / Postal Code: _____

New Address:

Name / Title: _____

Company: _____

Mailing address: _____

Province / Postal Code: _____

Phone: _____

Agenda

- APWA's PWX 2022**
August 28-31, 2022
Charlotte, NC USA
- M&T Expo - Trade Fair for Construction and Mining Equipment**
August 30 - September 2, 2022
São Paulo, Brazil
- NTEA - Commercial Vehicle Upfitting Summit**
September 13-14, 2022
Sandusky, OH USA
- SWIFT 2022**
September 13-15, 2022
Montreal, QC Canada
- GaLaBau 2022**
September 14-17, 2022
Nürnberg, Germany
- APOM Technical Day**
September 15, 2022
Change of Venue
Dorval, QC Canada

- InnoTrans**
September 20-23, 2022
Berlin, Germany
- Equip Exposition / Hardscape North America**
October 18-21, 2022
Louisville, KY USA

- inter airport FOCUS**
October 20-21, 2022
Berlin, Germany

- bauma**
October 24-30, 2022
Munich, Germany

- Landscape Ontario's CONGRESS**
January 10-12, 2023
Toronto, ON Canada

- World of Concrete 2023**
January 16-19, 2023 (education)
January 17-19, 2023 (exhibition)
Las Vegas, NV USA

- Work Truck Week**
March 7-10, 2023
Indianapolis, IN USA

- CONEXPO-CON/AGG**
March 14-18, 2023
Las Vegas, NV USA

- SMOPYC 2023 – International Show of Public Works, Construction and Mining Machinery**
April 26-29, 2023
Zaragoza, Spain

- International Rental Exhibition (IRE) / APEX access show**
June 6-8, 2023
Maastricht, the Netherlands

- steinexpo**
August 23-26, 2023
Homburg/Nieder-Ofleiden, Germany

- The Utility Expo**
September 26-28, 2023
Louisville, KY USA

- TECHNI-MAT (Trade show for infrastructure and structural building)**
March 6-7, 2024
Kortrijk, Belgium

- INTERMAT Paris**
Rescheduled to April 2024
Paris, France

bauma

CONEXPO
CON / AGG

steinexpo

INTERMAT

TAKING CONSTRUCTION TO THE NEXT LEVEL.

2.7M square feet of exhibits / 130,000 attendees / 1,800 exhibitors / 150 education sessions

CONEXPO
CON / AGG

MARCH 14-18 / 2023 / LAS VEGAS / NEVADA

No matter what sector of construction you're in, you'll leave CONEXPO-CON/AGG with new ideas, new relationships, and new opportunities to grow your business, and your place within the industry. This isn't just North America's largest construction trade show, it's taking construction to the next level.

LEARN MORE AT CONEXPOCONAGG.COM



2020 Attendee Missy Scherber,
T. Scherber Demolition & Excavating

READY, SET SNOW!



CONTACT US

Visit our website at www.metec.ca or contact us at sales@metec.ca or 613-678-3957 x211



WE'RE READY!
ARE YOU?

METEC Metal Technology Inc. 20 Terry Fox Drive, Vankleek Hill, Ontario | 613-678-3957 | info@metec.ca | www.metec.ca